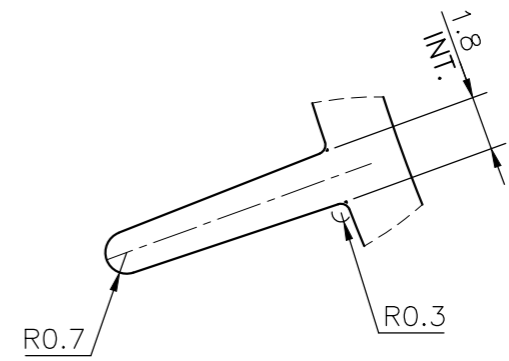
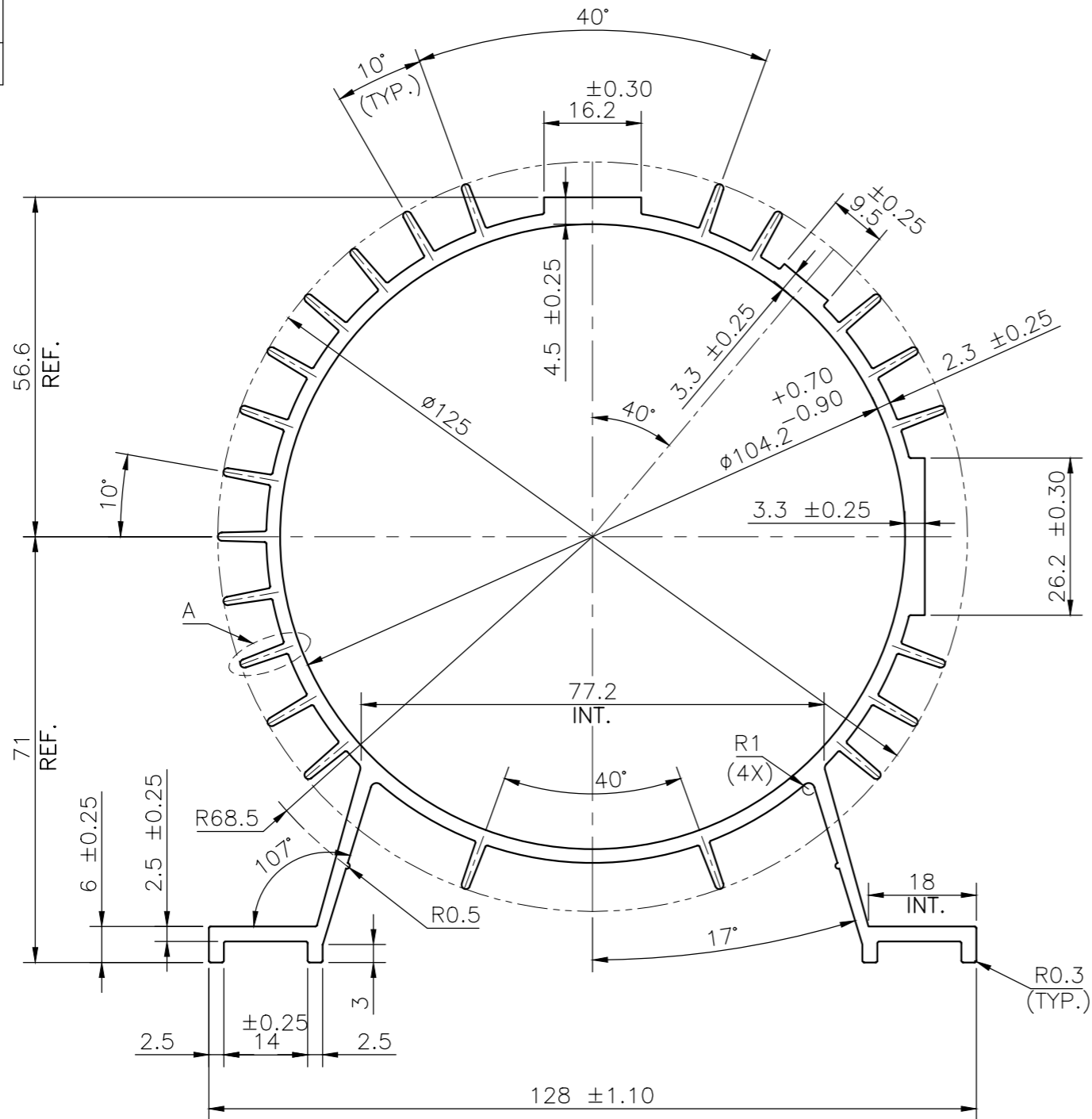



MAL NO-15363

D6640



DETAIL-A
SCALE 4:1

TWIST= $\pm 1/4^{\circ}/300\text{M.M./M.}$
 FLATNESS= $\text{WIDTH} \times 0.005\text{mm.}$
 STRAIGHTNESS= 1.5 M.M./MTR.
 ANGULARITY= $\pm 1.5^{\circ}$

 SYMBOL OF QUALITY AN ISO 9001 COMPANY	JINDAL ALUMINIUM LTD. BANGALORE-560073 (INDIA)	NAME	DATE
		DRAWN	ASHUTOSH 21-06-2022
1. ALL DIMENSIONS ARE IN mm. 2. ROUND OFF ALL SHARP CORNERS WITH 0.40 mm. 3. TOLERANCES WILL BE AS PER BS:EN-755-9 , UNLESS OTHERWISE SPECIFIED		CHECKED	
		APPROVED	
PARTY'S NAME M/S. E INDIA ELECTRICALS		SCALE	1:1
		AREA mm ²	1388.50
PARTY'S DRAWING No. AS PER DRAWING		PERIMETER mm.	893.94
		WEIGHT kg/m	3.749
ALLOY & TEMPER 6063 T6		DRAWING No.	SECTION No.
		MAL NO-15363	
DESCRIPTION MOTOR BODY SECTION		D6640	D6640