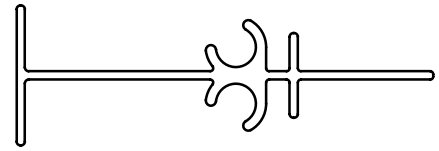
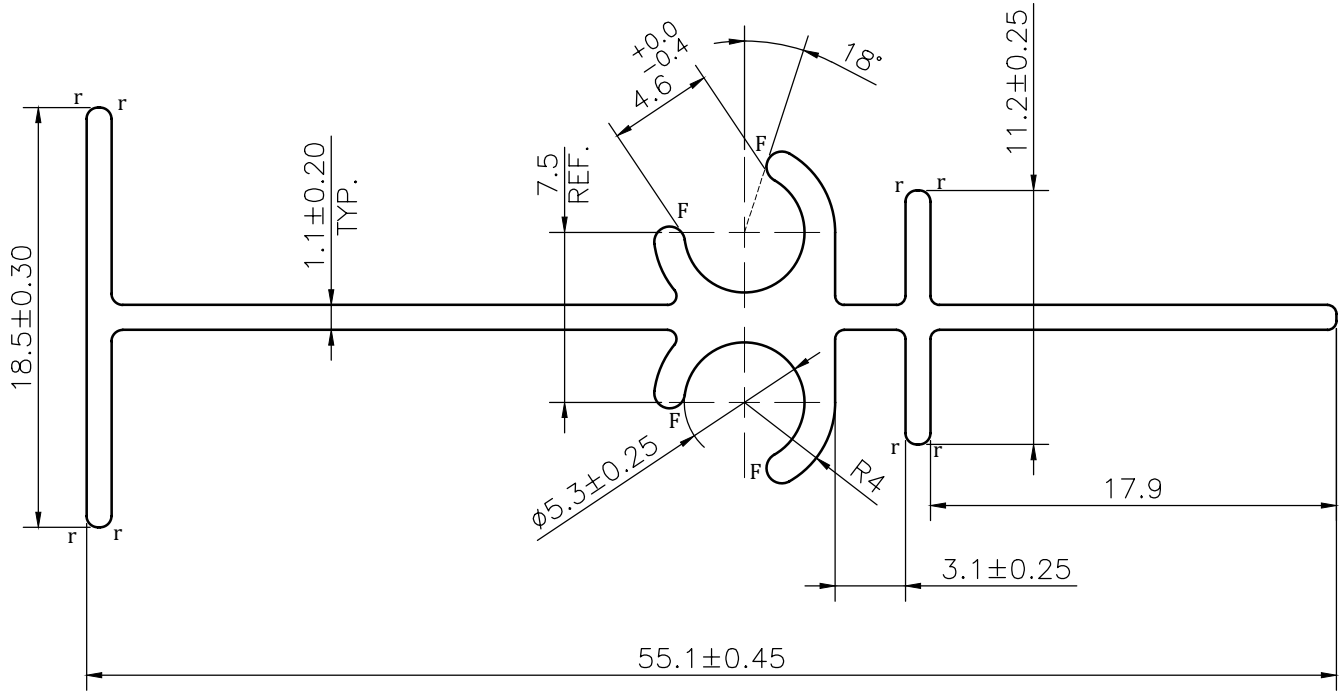


MAL NO.-15461

D6676



SCALE 1:1



**NOTE:-**

**r= 0.50 RADIUS (8 PLACES)**  
**F= FULL RADIUS (4 PLACES)**

1. STRAIGHTNESS= 1.7mm/M
2. TWIST= 1.7mm/M
3. ANGULARITY= ±2°
4. FLATNESS= 0.007xWIDTH



SYMBOL OF QUALITY  
AN ISO 9001 COMPANY

**JINDAL ALUMINIUM LTD.**  
 BHIWADI-301019 (INDIA)

	NAME	DATE
DRAWN	ASHUTOSH	23-08-2023
CHECKED		
APPROVED		

1. ALL DIMENSIONS ARE IN mm.
2. ROUND OFF ALL SHARP CORNERS WITH 0.40 mm.
3. TOLERANCES WILL BE AS PER BS:EN-755-9 , UNLESS OTHERWISE SPECIFIED

SCALE	3:1
AREA mm <sup>2</sup>	128.282
PERIMETER mm.	200.27
WEIGHT kg/m	0.346

PARTY'S NAME	RUSKIN TITUS		DRAWING No.	SECTION No.
PARTY'S DRAWING No.	AS PER DRAWING		MAL NO.-15461	-
ALLOY & TEMPER	6063 T6	PRODUCT CODE:-082	D6676	D6676
		HSN CODE:- 76042990		
DESCRIPTION	AIR GRILL SECTION			