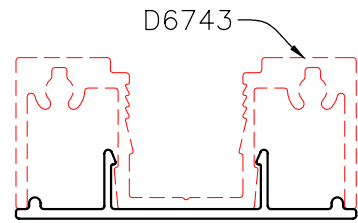
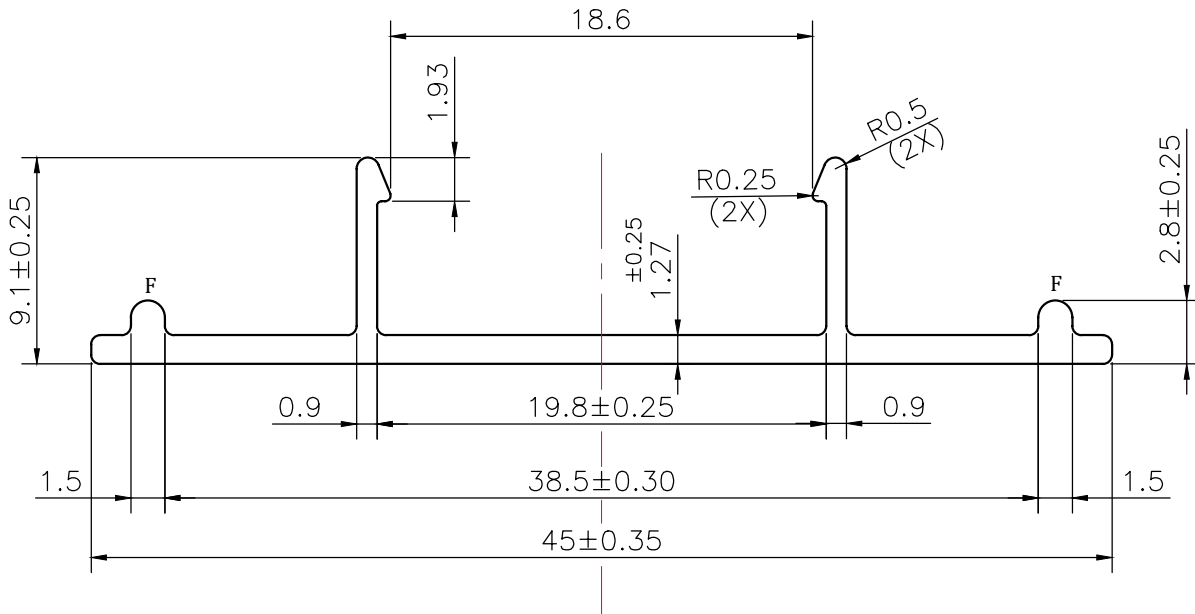


MAL NO.-15651

D6744



SCALE 1:1



NOTE:-

F= FULL RADIUS (2 PLACES)

1. STRAIGHTNESS= 1.7mm/M
2. TWIST= 1.7mm/M
3. ANGULARITY= ±2°
4. FLATNESS= 0.007xWIDTH



SYMBOL OF QUALITY
AN ISO 9001 COMPANY

JINDAL ALUMINIUM LTD.
BHIWADI-301019 (INDIA)

	NAME	DATE
DRAWN	ASHUTOSH	19-08-2023
CHECKED		
APPROVED		

1. ALL DIMENSIONS ARE IN mm.
2. ROUND OFF ALL SHARP CORNERS WITH 0.40 mm.
3. TOLERANCES WILL BE AS PER BS:EN-755-9 , UNLESS OTHERWISE SPECIFIED

SCALE	3:1
AREA mm ²	76.565
PERIMETER mm.	126.99
WEIGHT kg/m	0.207
DRAWING No.	SECTION No.
MAL NO.-15651	
D6744	D6744

PARTY'S NAME	PERFECT SOLUTIONS	
PARTY'S DRAWING No.	AS PER DRAWING	
ALLOY & TEMPER	6063 T6	PRODUCT CODE:-051
		HSN CODE:- 76042990
DESCRIPTION	FURNITURE SECTION	