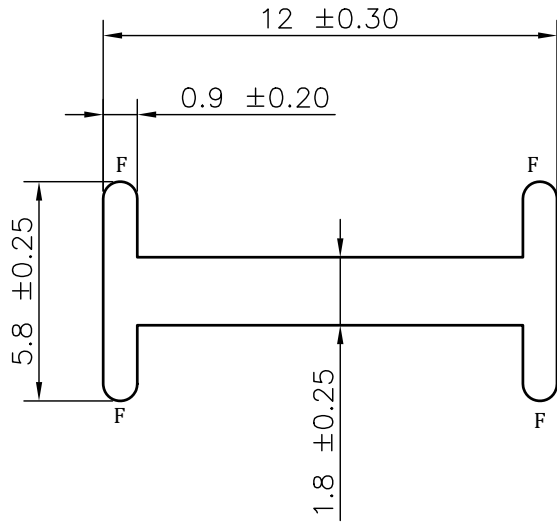
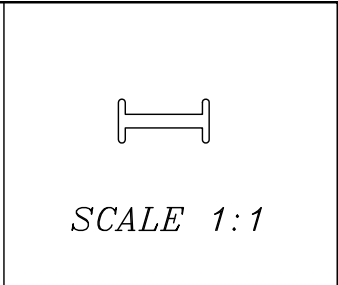


MAL NO-15657
D6748



NOTE:-
F= FULL RADIUS (4 PLACES)

- 1. STRAIGHTNESS= 1.7mm/M
- 2. TWIST= 1.7mm/M
- 3. ANGULARITY= ±2°
- 4. FLATNESS= 0.007xWIDTH

 SYMBOL OF QUALITY AN ISO 9001 COMPANY	JINDAL ALUMINIUM LTD. BANGALORE-560073 (INDIA)		NAME	DATE
			DRAWN	ASHUTOSH
1. ALL DIMENSIONS ARE IN mm. 2. ROUND OFF ALL SHARP CORNERS WITH 0.40 mm. 3. TOLERANCES WILL BE AS PER BS:EN-755-9 , UNLESS OTHERWISE SPECIFIED			CHECKED	
			APPROVED	
PARTY'S NAME PERFECT SOLUTIONS			SCALE	5:1
			AREA mm ²	28.45
PARTY'S DRAWING No. AS PER DRAWING			PERIMETER mm.	42.00
			WEIGHT kg/m	0.077
ALLOY & TEMPER 6063 T6			DRAWING No.	SECTION No.
			MAL NO-15657	
DESCRIPTION H SECTION			D6748	D6748
PRODUCT CODE:-022 HSN CODE:- 76042990				