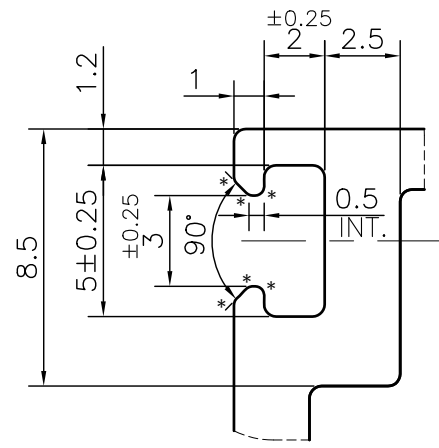
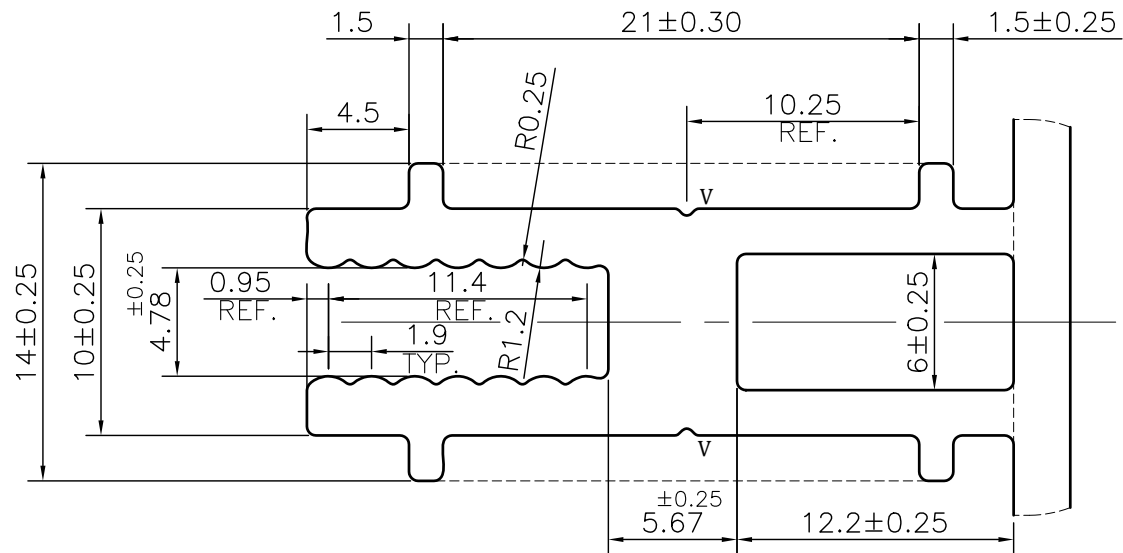
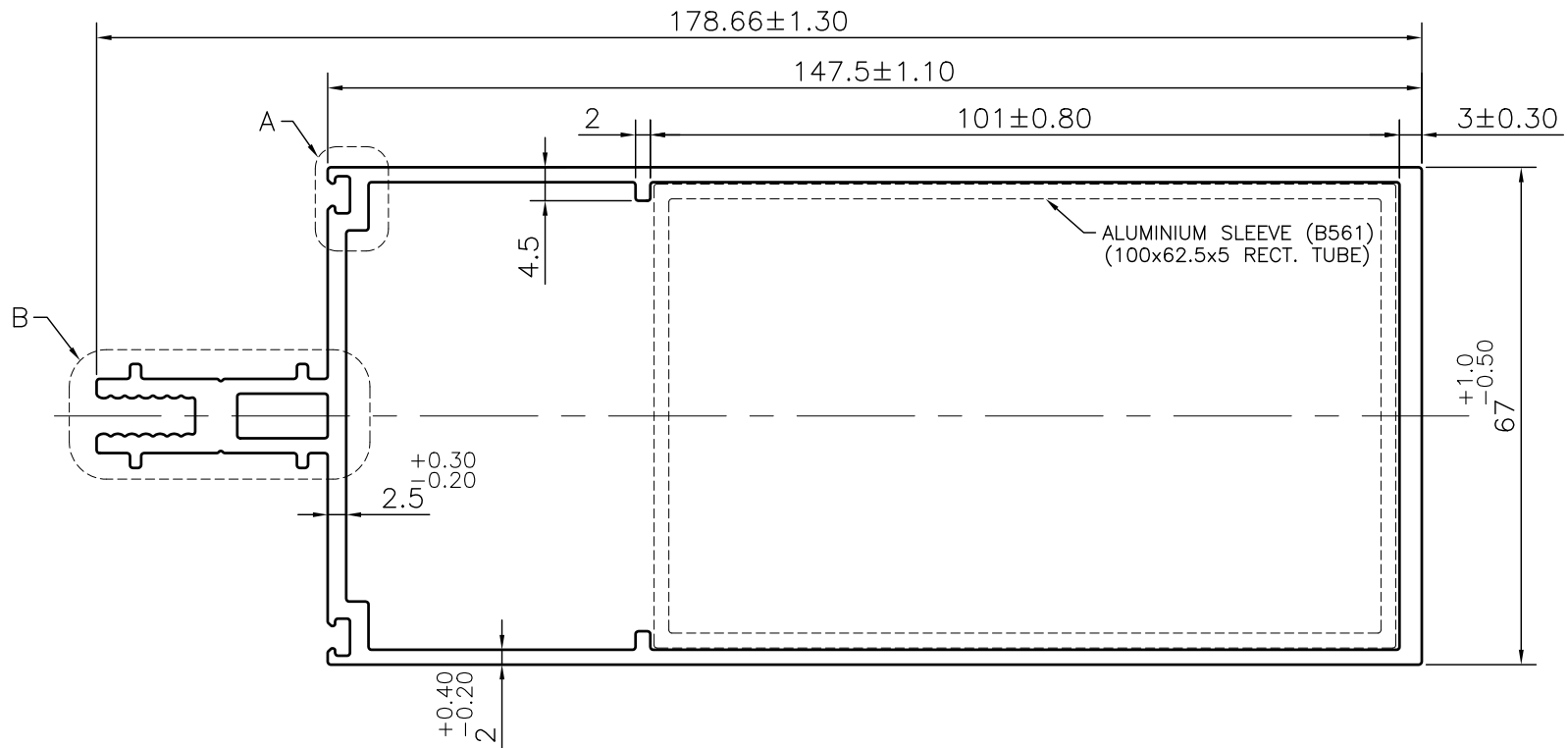


MAL NO.-15755

D6772



DETAIL A
SCALE 4:1



DETAIL B
SCALE 3:1

NOTE:-
 *= 0.30 RADIUS (12 PLACES)
 V= 0.3x90° V-GROOVE(2 PLACES)

1. STRAIGHTNESS= 1.7mm/M
2. TWIST= 1.7mm/M
3. ANGULARITY= ±2°
4. FLATNESS= 0.007xWIDTH

 SYMBOL OF QUALITY AN ISO 9001 COMPANY	JINDAL ALUMINIUM LTD. BHIWADI-301019 (INDIA)		NAME	DATE
			DRAWN	ASHUTOSH 07-11-2023
1. ALL DIMENSIONS ARE IN mm. 2. ROUND OFF ALL SHARP CORNERS WITH 0.40 mm. 3. TOLERANCES WILL BE AS PER BS:EN-755-9 , UNLESS OTHERWISE SPECIFIED		APPROVED		
		SCALE	1:1	
PARTY'S NAME UNITECH		AREA mm ²	1142.479	
		PERIMETER mm.	548.269	
PARTY'S DRAWING No. AS PER DRAWING		WEIGHT kg/m	3.085	
		DRAWING No.	SECTION No.	
ALLOY & TEMPER 6063 T6 PRODUCT CODE:-055 HSN CODE:- 76042100		MAL NO.-15755	-	
		D6772	D6772	
DESCRIPTION CURTAIN WALL SECTION				