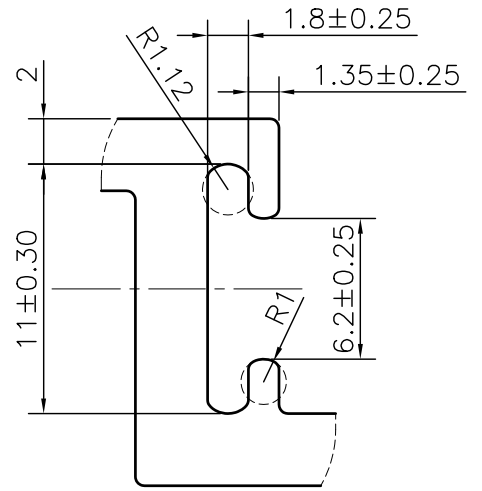
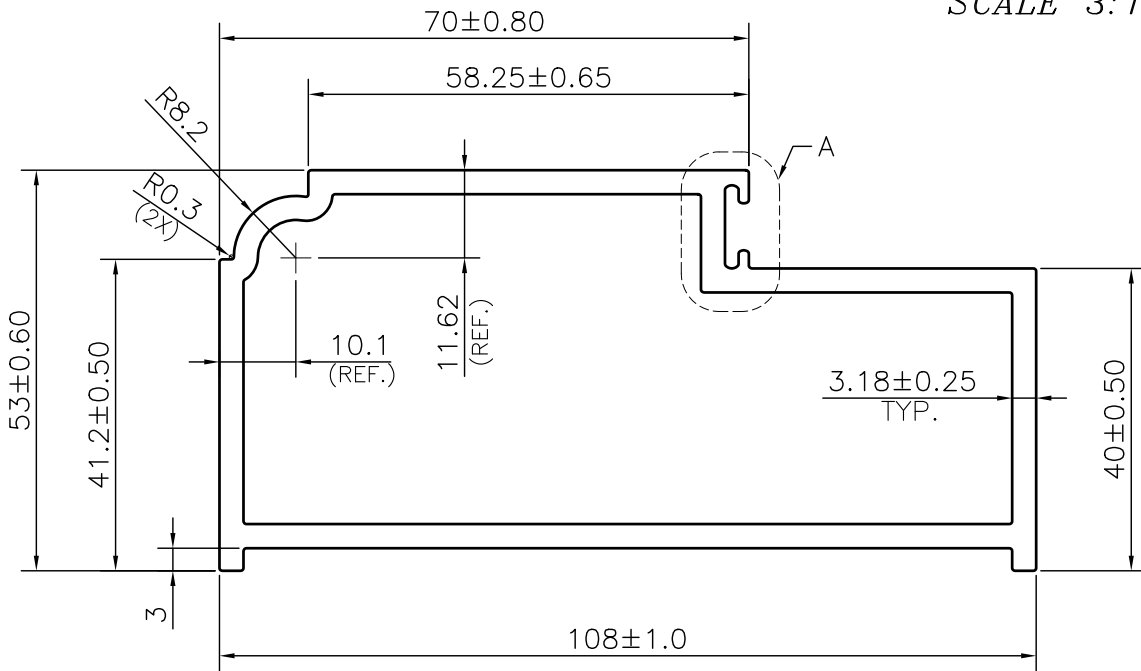


MAL NO.-15828

D6780



DETAIL A
SCALE 3:1



1. STRAIGHTNESS= 1.7mm/M
2. TWIST= 1.7mm/M
3. ANGULARITY= ±2°
4. FLATNESS= 0.007xWIDTH



SYMBOL OF QUALITY
AN ISO 9001 COMPANY

JINDAL ALUMINIUM LTD.
BHIWADI-301019 (INDIA)

	NAME	DATE
DRAWN	ASHUTOSH	25-12-2023
CHECKED		
APPROVED		
SCALE		1:1
AREA mm ²		982.89
PERIMETER mm.		336.154
WEIGHT kg/m		2.654
DRAWING No.		SECTION No.
MAL NO.-15828		-
D6780		D6780

1. ALL DIMENSIONS ARE IN mm.
2. ROUND OFF ALL SHARP CORNERS WITH 0.40 mm.
3. TOLERANCES WILL BE AS PER BS:EN-755-9 , UNLESS OTHERWISE SPECIFIED

PARTY'S NAME	SMW METAL PVT. LTD.	
PARTY'S DRAWING No.	AS PER DRAWING	
ALLOY & TEMPER	6063 T6	PRODUCT CODE:-045
		HSN CODE:- 76042100
DESCRIPTION	DOOR SECTION	