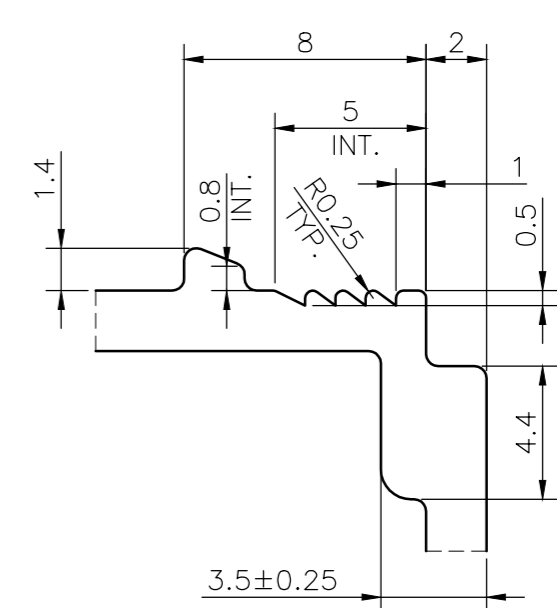
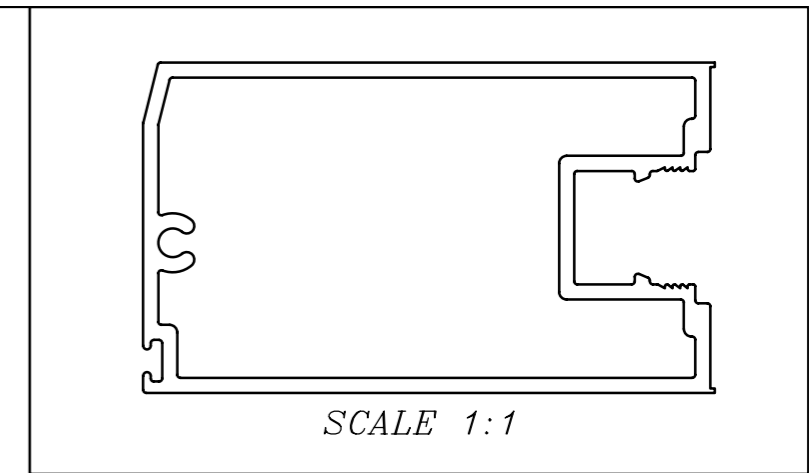
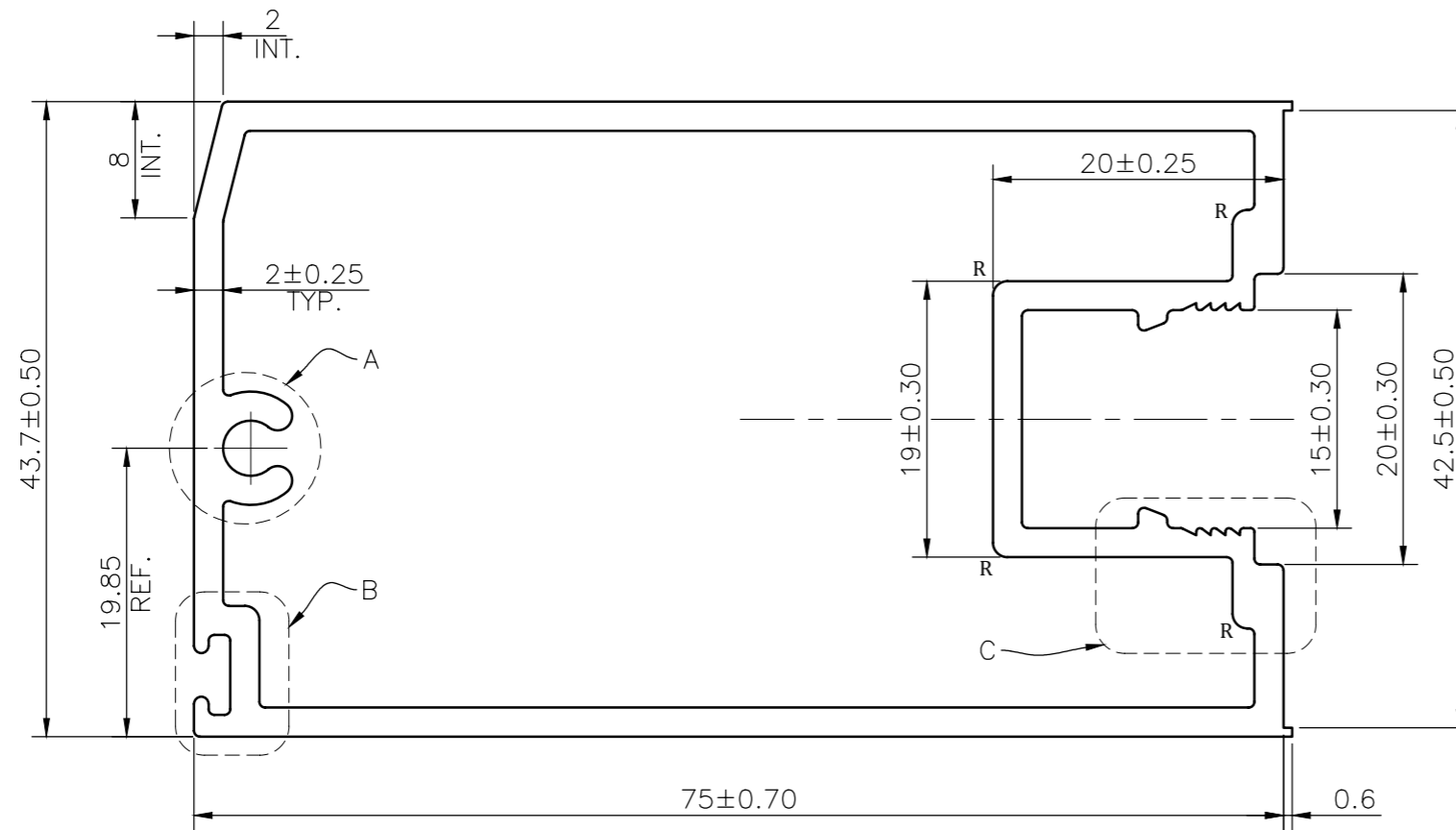
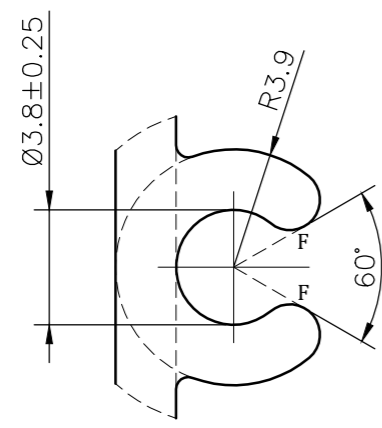


MAL NO.-15749

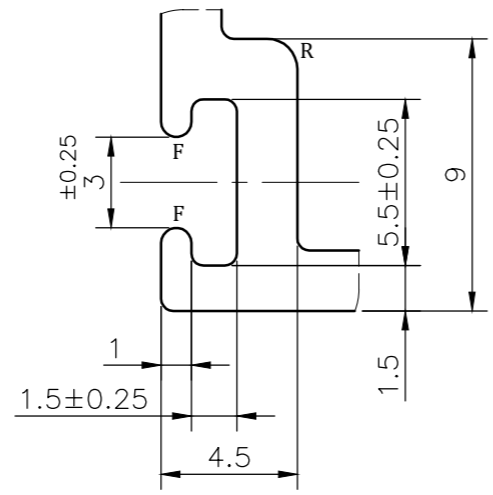
D6872



DETAIL C  
SCALE 4:1




DETAIL A  
SCALE 4:1



DETAIL B  
SCALE 4:1

**NOTE:-**  
**R= 1.0 RADIUS (5 PLACES)**  
**F= FULL RADIUS (4 PLACES)**

1. STRAIGHTNESS= 1.7mm/M
2. TWIST= 1.7mm/M
3. ANGULARITY= ±2°
4. FLATNESS= 0.007xWIDTH

 SYMBOL OF QUALITY AN ISO 9001 COMPANY	<b>JINDAL ALUMINIUM LTD.</b> BANGALORE-560073 (INDIA)		NAME	DATE
			DRAWN	ASHUTOSH 21-08-2023
1. ALL DIMENSIONS ARE IN mm. 2. ROUND OFF ALL SHARP CORNERS WITH 0.40 mm. 3. TOLERANCES WILL BE AS PER BS:EN-755-9, UNLESS OTHERWISE SPECIFIED			CHECKED	
			APPROVED	
PARTY'S NAME PERFECT SOLUTION			SCALE	2:1
			AREA mm <sup>2</sup>	561.508
PARTY'S DRAWING No. AS PER DRAWING			PERIMETER mm.	288.79
			WEIGHT kg/m	1.516
ALLOY & TEMPER 6063 T6			DRAWING No.	SECTION No.
			MAL NO.-15749	-
DESCRIPTION ARCHITECTURAL MISCELLANEOUS			D6872	D6872
			PRODUCT CODE:-056	
			HSN CODE:-76042100	