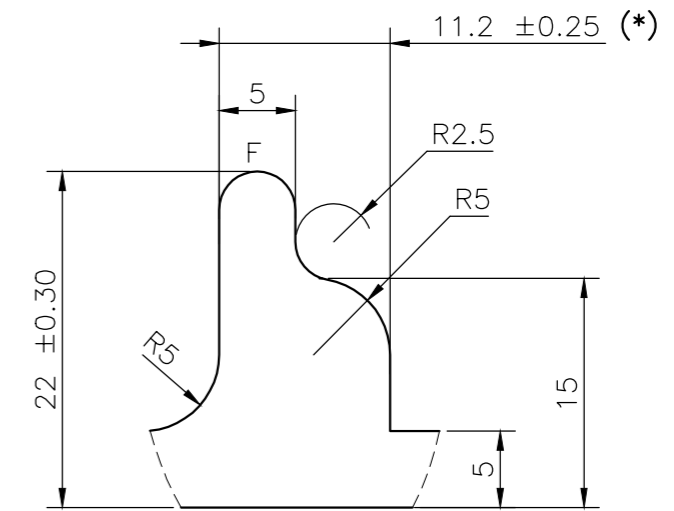
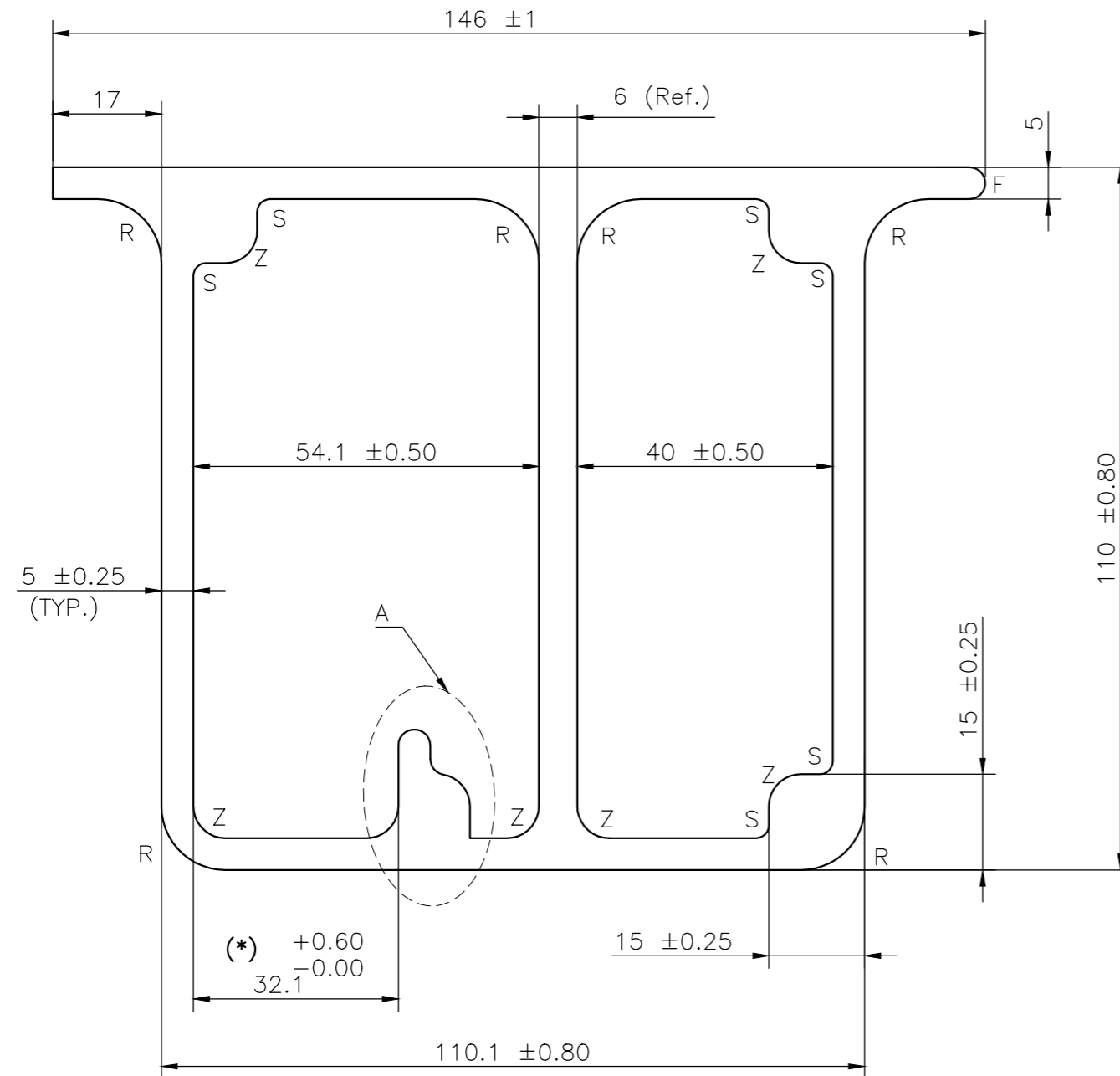


MAL-16300


D6932



DETAIL A
SCALE 2:1

NOTE:-
R= 10.00R
S= 2.00R
Z= 5.00R
F= FULL RADIUS
*= CRITICAL DIM.

TWIST= ±1/4°/300M.M./M.
 FLATNESS= WIDTHX0.005mm.
 STRAIGHTNESS= 1.5 M.M./MTR.
 ANGULARITY= ±1.5°

 SYMBOL OF QUALITY AN ISO 9001 COMPANY	JINDAL ALUMINIUM LTD. BANGALORE-560073 (INDIA)		NAME	DATE
			DRAWN	ASHUTOSH
1. ALL DIMENSIONS ARE IN mm. 2. ROUND OFF ALL SHARP CORNERS WITH 0.40 mm. 3. TOLERANCES WILL BE AS PER BS:EN-755-9 , UNLESS OTHERWISE SPECIFIED			CHECKED	
			APPROVED	
PARTY'S NAME M/S. EXCEL CONTROLINKAGE			SCALE	1:1
			AREA mm ²	3371.29
PARTY'S DRAWING No. AS PER DRAWING			PERIMETER mm.	492.69
			WEIGHT kg/m	9.102
ALLOY & TEMPER 6063 T6			DRAWING No.	SECTION No.
			MAL-16300	D6932
DESCRIPTION ELECTRICAL SECTION				