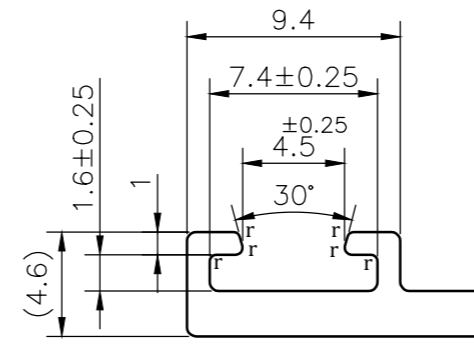
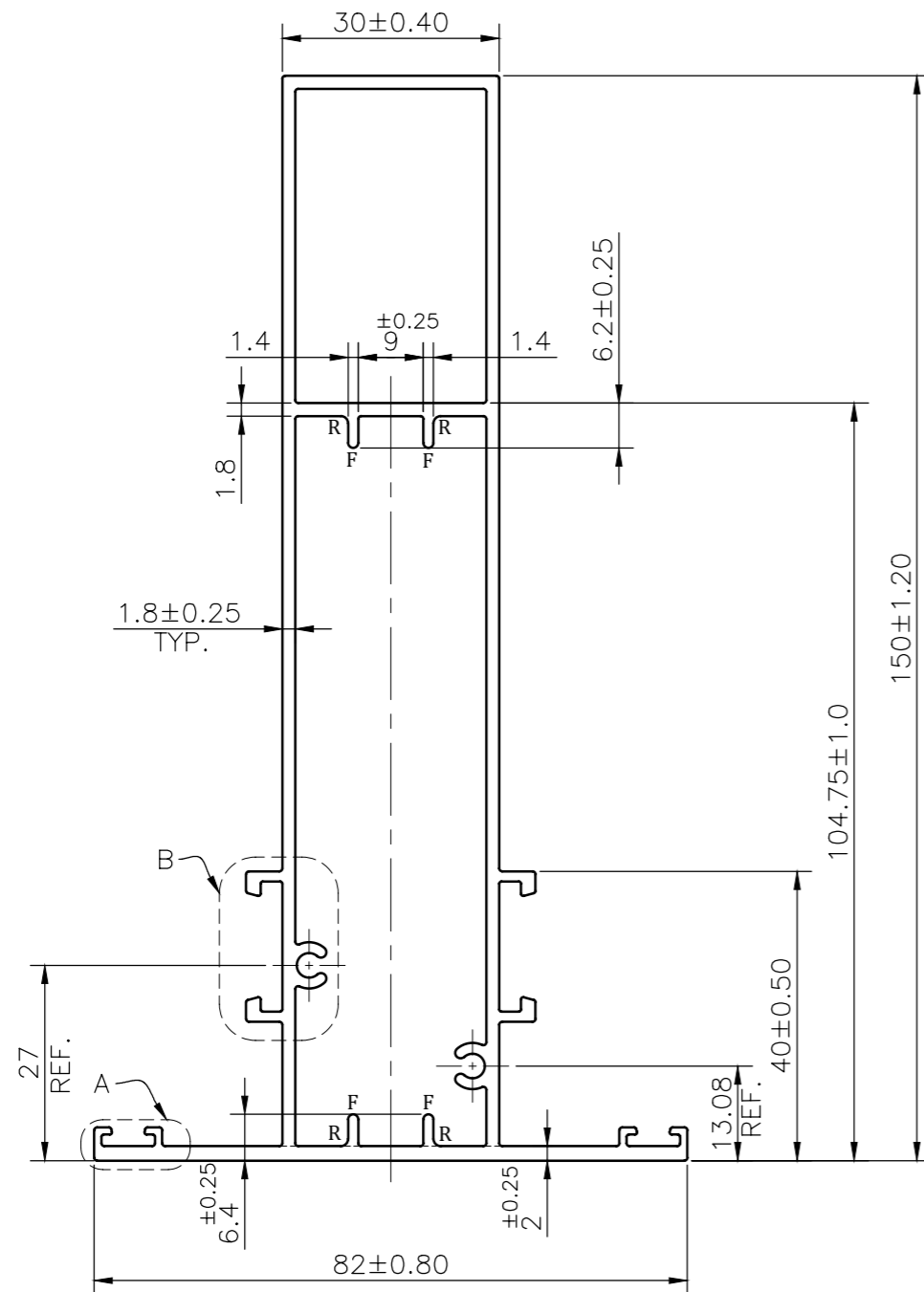
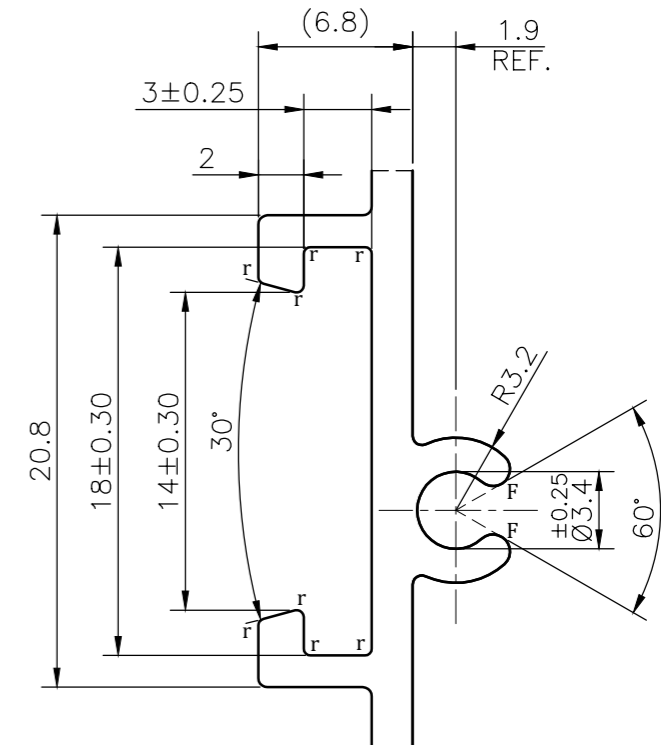


MAL NO.-16825

D7096




DETAIL A  
SCALE 3:1



DETAIL B  
SCALE 3:1

**NOTE:-**  
**r= 0.30 RADIUS (28 PLACES)**  
**R= 1.0 RADIUS (4 PLACES)**  
**F= FULL RADIUS (8 PLACES)**

1. STRAIGHTNESS= 1.7mm/M
2. TWIST= 1.7mm/M
3. ANGULARITY= ±2°
4. FLATNESS= 0.007xWIDTH

 SYMBOL OF QUALITY AN ISO 9001 COMPANY	<b>JINDAL ALUMINIUM LTD.</b> BANGALORE-560073 (INDIA)		NAME	DATE
			DRAWN	ASHUTOSH 21-08-2023
1. ALL DIMENSIONS ARE IN mm. 2. ROUND OFF ALL SHARP CORNERS WITH 0.40 mm. 3. TOLERANCES WILL BE AS PER BS:EN-755-9 , UNLESS OTHERWISE SPECIFIED			CHECKED	
			APPROVED	
PARTY'S NAME AXSYS SOLUTION			SCALE	1:1
			AREA mm <sup>2</sup>	904.0
PARTY'S DRAWING No. AS PER DRAWING			PERIMETER mm.	542.304
			WEIGHT kg/m	2.441
ALLOY & TEMPER 6063 T6			DRAWING No.	SECTION No.
			MAL NO.-16825	-
DESCRIPTION ARCHITECTURAL MISCELLANEOUS			D7096	D7096
			PRODUCT CODE:-056	
			HSN CODE:-76042100	