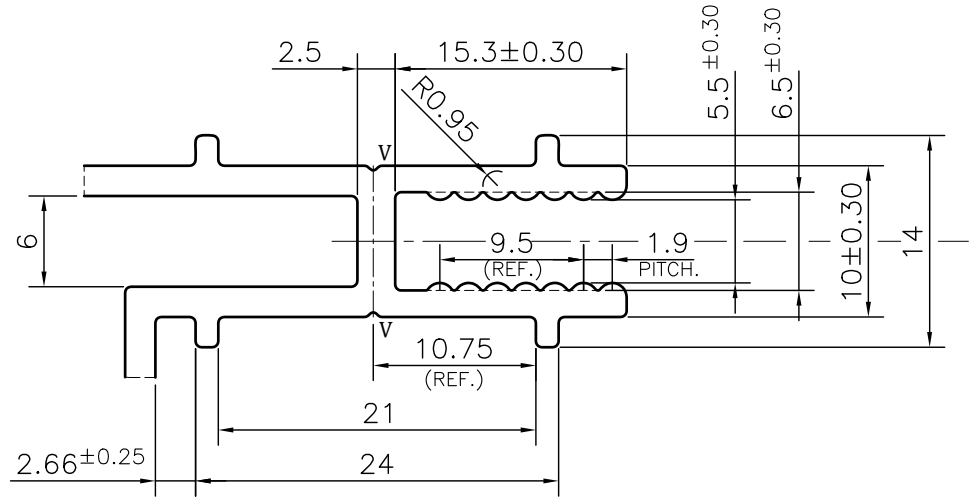
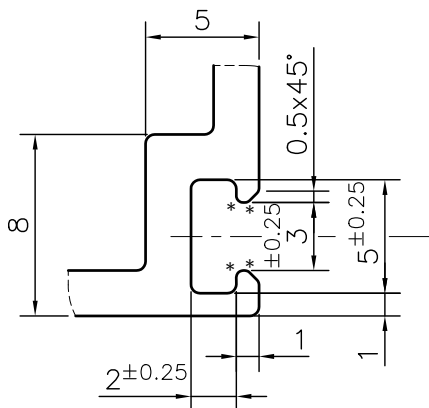
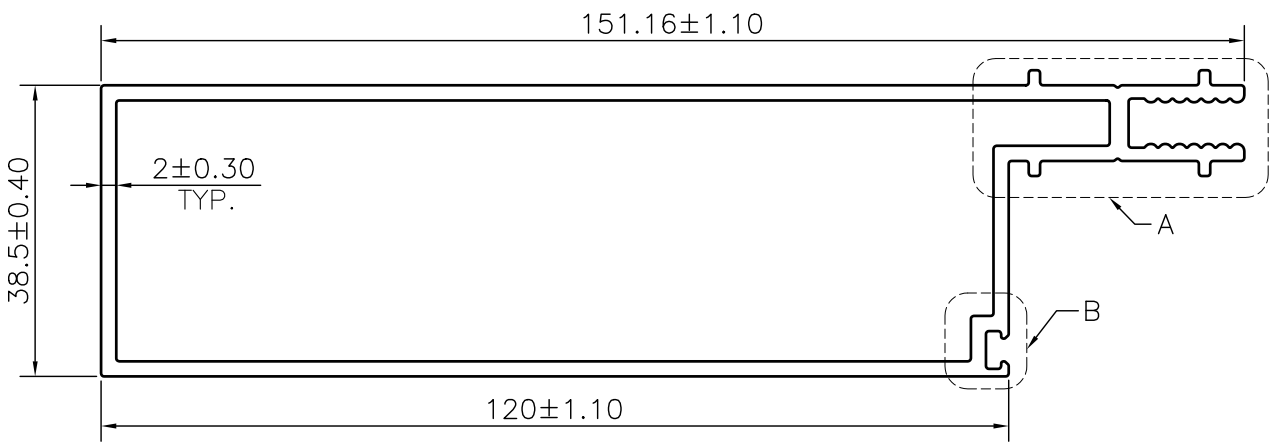


MAL NO.-16862

D7185



DETAIL A
SCALE 2:1



DETAIL B
SCALE 3:1

NOTE:-

*= 0.30 RADIUS (4 PLACES)

V= 0.3x90° V-GROOVE (2 PLACES)

1. STRAIGHTNESS= 1.7mm/M
2. TWIST= 1.7mm/M
3. ANGULARITY= ±2°
4. FLATNESS= 0.007xWIDTH



SYMBOL OF QUALITY
AN ISO 9001 COMPANY

JINDAL ALUMINIUM LTD.
BHIWADI-301019 (INDIA)

	NAME	DATE
DRAWN	ASHUTOSH	16-02-2024
CHECKED		
APPROVED		
SCALE		1:1
AREA mm ²		762.922
PERIMETER mm.		435.114
WEIGHT kg/m		2.060
DRAWING No.	SECTION No.	
MAL NO.-16862	-	
D7185	D7185	

1. ALL DIMENSIONS ARE IN mm.
2. ROUND OFF ALL SHARP CORNERS WITH 0.40 mm.
3. TOLERANCES WILL BE AS PER BS:EN-755-9 , UNLESS OTHERWISE SPECIFIED

PARTY'S NAME	DAH	
PARTY'S DRAWING No.	AS PER DRAWING	
ALLOY & TEMPER	6063 T6	PRODUCT CODE:-055
		HSN CODE:- 76042100
DESCRIPTION	CURTAIN WALL SECTION	