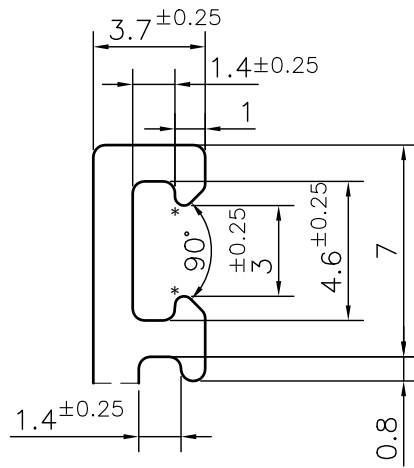
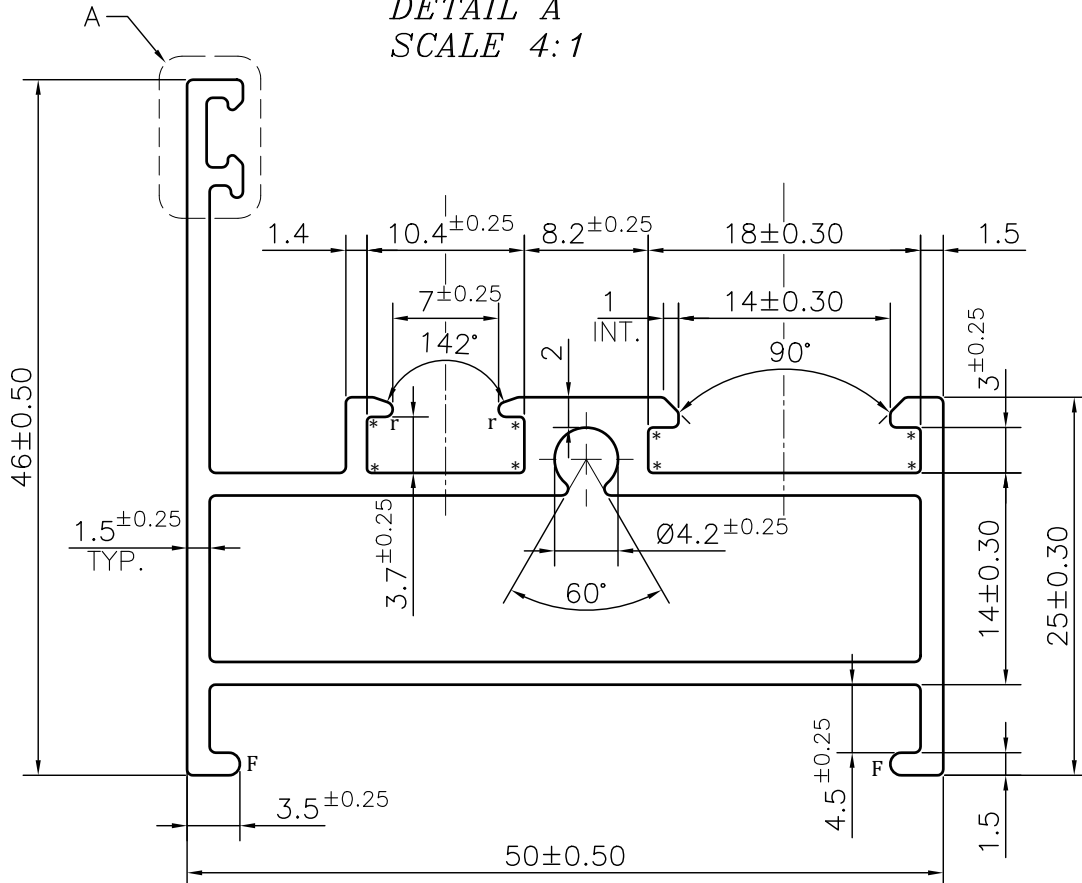
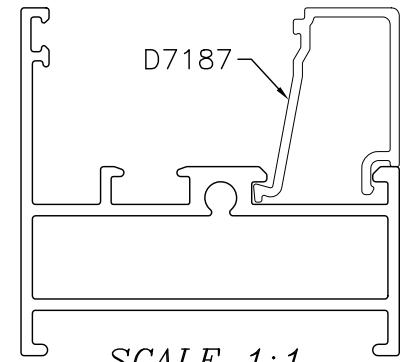


MAL NO.-16863

D7186



DETAIL A
SCALE 4:1



NOTE:-

*= 0.30 RADIUS (10 PLACES)
r= 0.50 RADIUS (2 PLACES)
F= FULL RADIUS (2 PLACES)

1. STRAIGHTNESS= 1.7mm/M
2. TWIST= 1.7mm/M
3. ANGULARITY= $\pm 2^\circ$
4. FLATNESS= 0.007xWIDTH



SYMBOL OF QUALITY
AN ISO 9001 COMPANY

JINDAL ALUMINIUM LTD.
BHIWADI-301019 (INDIA)

	NAME	DATE
DRAWN	ASHUTOSH	07-02-2024
CHECKED		
APPROVED		
SCALE		2:1
AREA mm ²		303.32
PERIMETER mm.		261.115
WEIGHT kg/m		0.819
DRAWING No.	SECTION No.	
MAL NO.-16863	-	
D7186	D7186	

1. ALL DIMENSIONS ARE IN mm.
2. ROUND OFF ALL SHARP CORNERS WITH 0.40 mm.
3. TOLERANCES WILL BE AS PER BS:EN-755-9 , UNLESS OTHERWISE SPECIFIED

PARTY'S NAME	DAH	
PARTY'S DRAWING No.	AS PER DRAWING	
ALLOY & TEMPER	6063 T6	PRODUCT CODE:-048
		HSN CODE:- 76042100
DESCRIPTION	WINDOW SECTION	