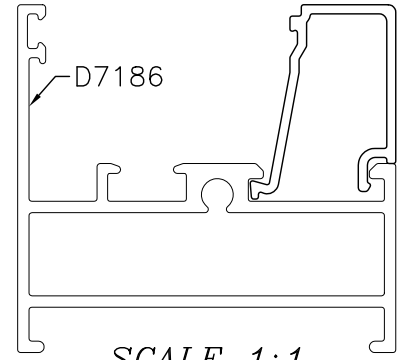
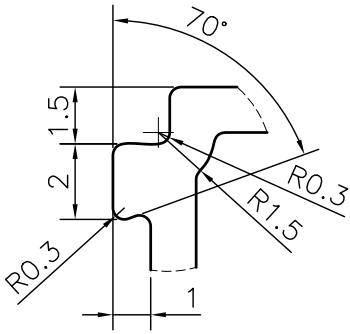


MAL NO.-16864

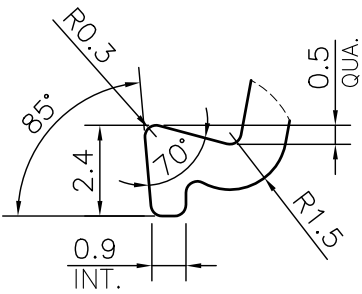
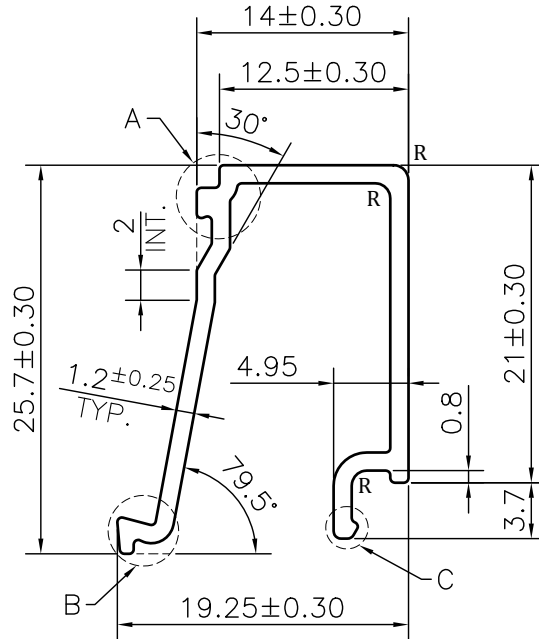
D7187



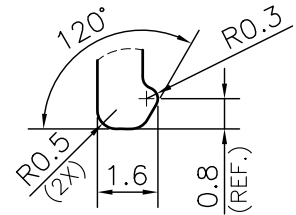
SCALE 1:1



DETAIL A  
SCALE 5:1



DETAIL B  
SCALE 5:1



DETAIL C  
SCALE 5:1

**NOTE:-**  
**R= 1.0 RADIUS (3 PLACES)**

👉 ROUND OFF ALL SHARP CORNERS WITH 0.30 mm.

1. STRAIGHTNESS= 1.7mm/M
2. TWIST= 1.7mm/M
3. ANGULARITY= ±2°
4. FLATNESS= 0.007xWIDTH



SYMBOL OF QUALITY  
AN ISO 9001 COMPANY

**JINDAL ALUMINIUM LTD.**  
BHIWADI-301019 (INDIA)

	NAME	DATE
DRAWN	ASHUTOSH	07-02-2024
CHECKED		
APPROVED		
SCALE		2:1
AREA mm <sup>2</sup>		83.037
PERIMETER mm.		137.24
WEIGHT kg/m		0.224
DRAWING No.	SECTION No.	
MAL NO.-16864	-	
D7187	D7187	

1. ALL DIMENSIONS ARE IN mm.
2. ROUND OFF ALL SHARP CORNERS WITH 0.40 mm.
3. TOLERANCES WILL BE AS PER BS:EN-755-9 , UNLESS OTHERWISE SPECIFIED

PARTY'S NAME	DAH	
PARTY'S DRAWING No.	AS PER DRAWING	
ALLOY & TEMPER	6063 T6	PRODUCT CODE:-044
		HSN CODE:- 76042990
DESCRIPTION	GLAZING CLIP SECTION	