

MAL NO.-17153

D7220

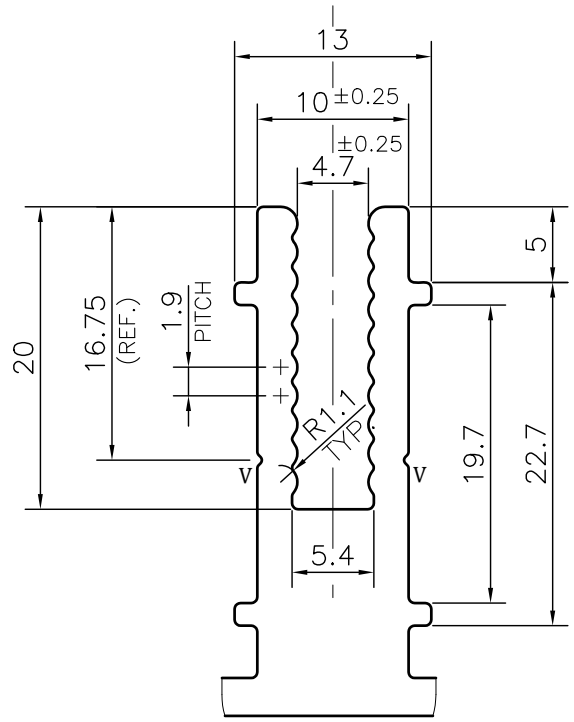
168.84±1.30

54.24±0.50

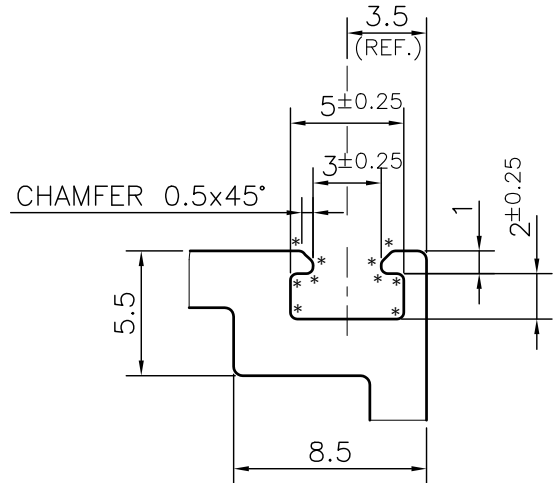
2.5±0.30
TYP.

67±0.60

200±1.50



DETAIL A
SCALE 2:1



DETAIL B
SCALE 3:1

NOTE:-

***= 0.30 RADIUS (10 PLACES)**

V= 0.30x90° V-GROOVE (2 PLACES)

1. STRAIGHTNESS= 1.7mm/M
2. TWIST= 1.7mm/M
3. ANGULARITY= ±2°
4. FLATNESS= 0.007xWIDTH



SYMBOL OF QUALITY
AN ISO 9001 COMPANY

JINDAL ALUMINIUM LTD.
BHIWADI-301019 (INDIA)

	NAME	DATE
DRAWN	ASHUTOSH	23-04-2024
CHECKED		
APPROVED		
SCALE		1:1
AREA mm ²		1538.978
PERIMETER mm.		602.049
WEIGHT kg/m		4.155
DRAWING No.	SECTION No.	
MAL NO.-17153	-	
D7220	D7220	

1. ALL DIMENSIONS ARE IN mm.
2. ROUND OFF ALL SHARP CORNERS WITH 0.40 mm.
3. TOLERANCES WILL BE AS PER BS:EN-755-9 , UNLESS OTHERWISE SPECIFIED

PARTY'S NAME	NOIDA WORLD ONE	
PARTY'S DRAWING No.	AS PER DRAWING-SIMILAR OF SECTION NO. 36225	
ALLOY & TEMPER	6063 T6	PRODUCT CODE:-055
		HSN CODE:- 76042100
DESCRIPTION	CURTAIN WALL SECTION	