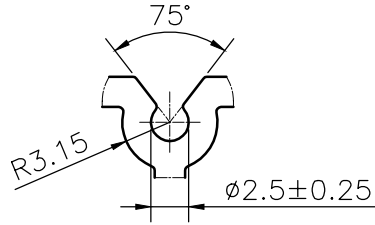
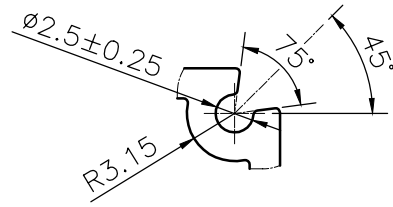


MAL NO.-17276

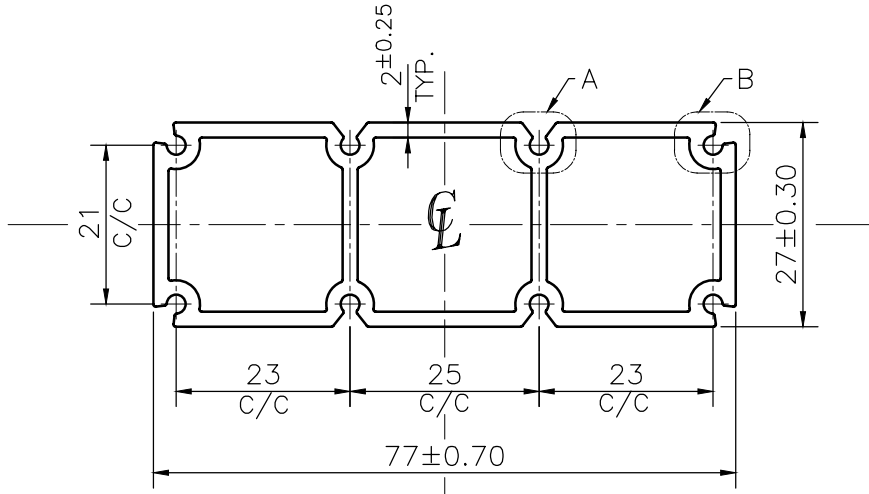
D7337



DETAIL A
SCALE 2:1



DETAIL B
SCALE 2:1



☞ ROUND OFF ALL SHARP CORNERS WITH 0.30 mm.

- 1. STRAIGHTNESS= 1.7mm/M
- 2. TWIST= 1.7mm/M
- 3. ANGULARITY= ±2°
- 4. FLATNESS= 0.007xWIDTH



SYMBOL OF QUALITY
AN ISO 9001 COMPANY

JINDAL ALUMINIUM LTD.
BHIWADI-301019 (INDIA)

	NAME	DATE
DRAWN	ASHUTOSH	07-10-2024
CHECKED		
APPROVED		
SCALE		1:1
AREA mm ²		516.452
PERIMETER mm.		249.765
WEIGHT kg/m		1.394
DRAWING No.		SECTION No.
MAL NO.-17276		-
D7337		D7337

- 1. ALL DIMENSIONS ARE IN mm.
- 2. ROUND OFF ALL SHARP CORNERS WITH 0.30 mm.
- 3. TOLERANCES WILL BE AS PER BS:EN-755-9 , UNLESS OTHERWISE SPECIFIED

PARTY'S NAME	C S G NETWORK PRIVATE LIMITED	
PARTY'S DRAWING No.	AS PER DRAWING B-783	
ALLOY & TEMPER	63400 WP	PRODUCT CODE:-085
		HSN CODE:- 76042100
DESCRIPTION	INDUSTRIAL SECTION	