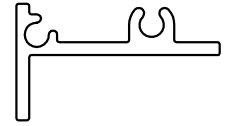
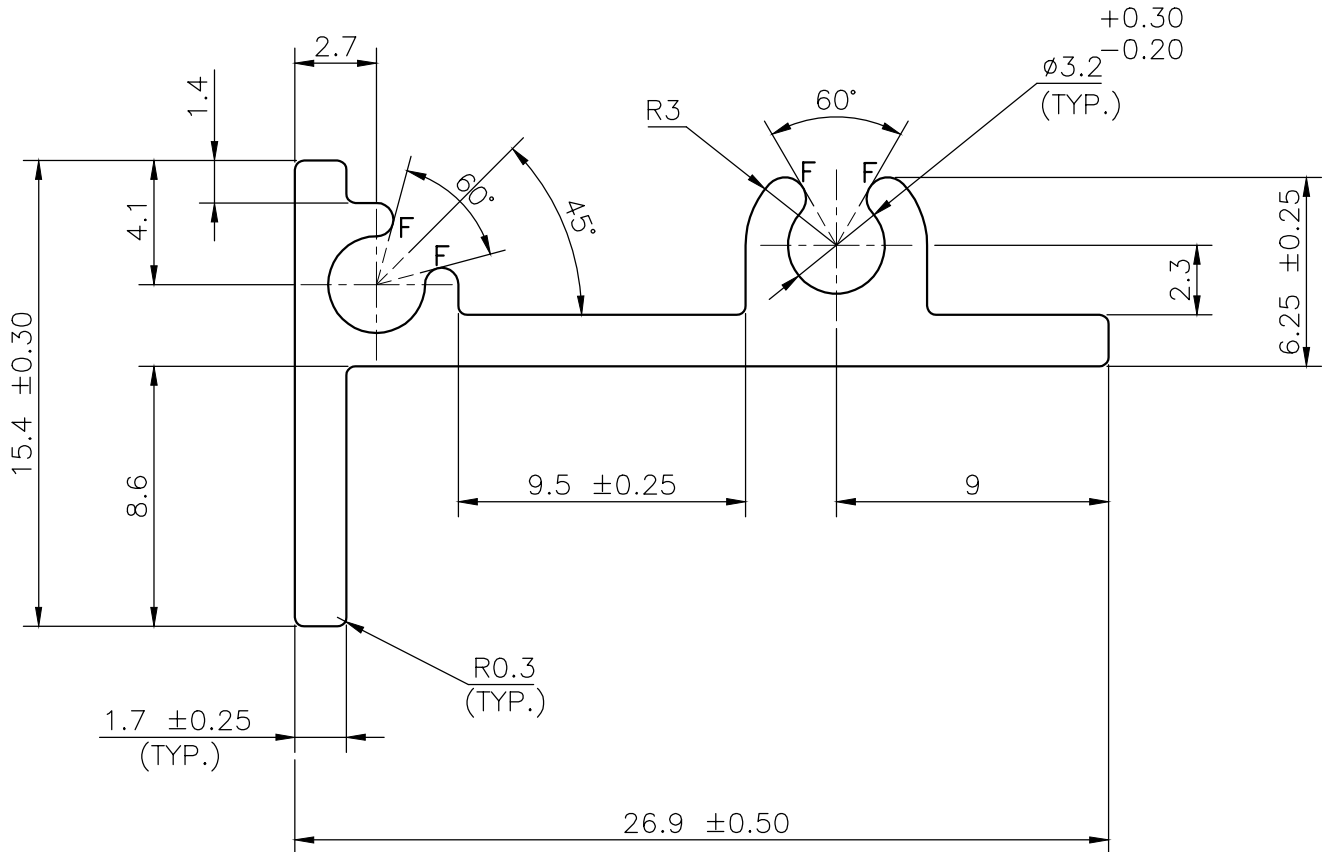


IAL-D-7339

D7339



SCALE 1:1



NOTE:-

F= FULL RADIUS

TWIST=  $\pm 1/4^\circ/300\text{M.M./M.}$ FLATNESS=  $\text{WIDTH} \times 0.005\text{mm.}$ STRAIGHTNESS=  $1.5 \text{ M.M./MTR.}$ ANGULARITY=  $\pm 1.5^\circ$ SYMBOL OF QUALITY  
AN ISO 9001 COMPANY

**JINDAL ALUMINIUM LTD.**  
BANGALORE-560073 (INDIA)

	NAME	DATE
DRAWN	ASHUTOSH	27-06-2022
CHECKED		
APPROVED		

1. ALL DIMENSIONS ARE IN mm.
2. ROUND OFF ALL SHARP CORNERS WITH 0.40 mm.
3. TOLERANCES WILL BE AS PER BS:EN-755-9, UNLESS OTHERWISE SPECIFIED

SCALE	4:1
AREA mm <sup>2</sup>	86.42
PERIMETER mm.	105.04
WEIGHT kg/m	0.233
DRAWING No.	SECTION No.

PARTY'S NAME M/S. SOAMI NOVELTIES.

PARTY'S DRAWING No. AS PER DRAWING

ALLOY &amp; TEMPER 6063-T6

DESCRIPTION STRUCTURAL MISC. SECTION

IAL-D-7339

D7339

D7339