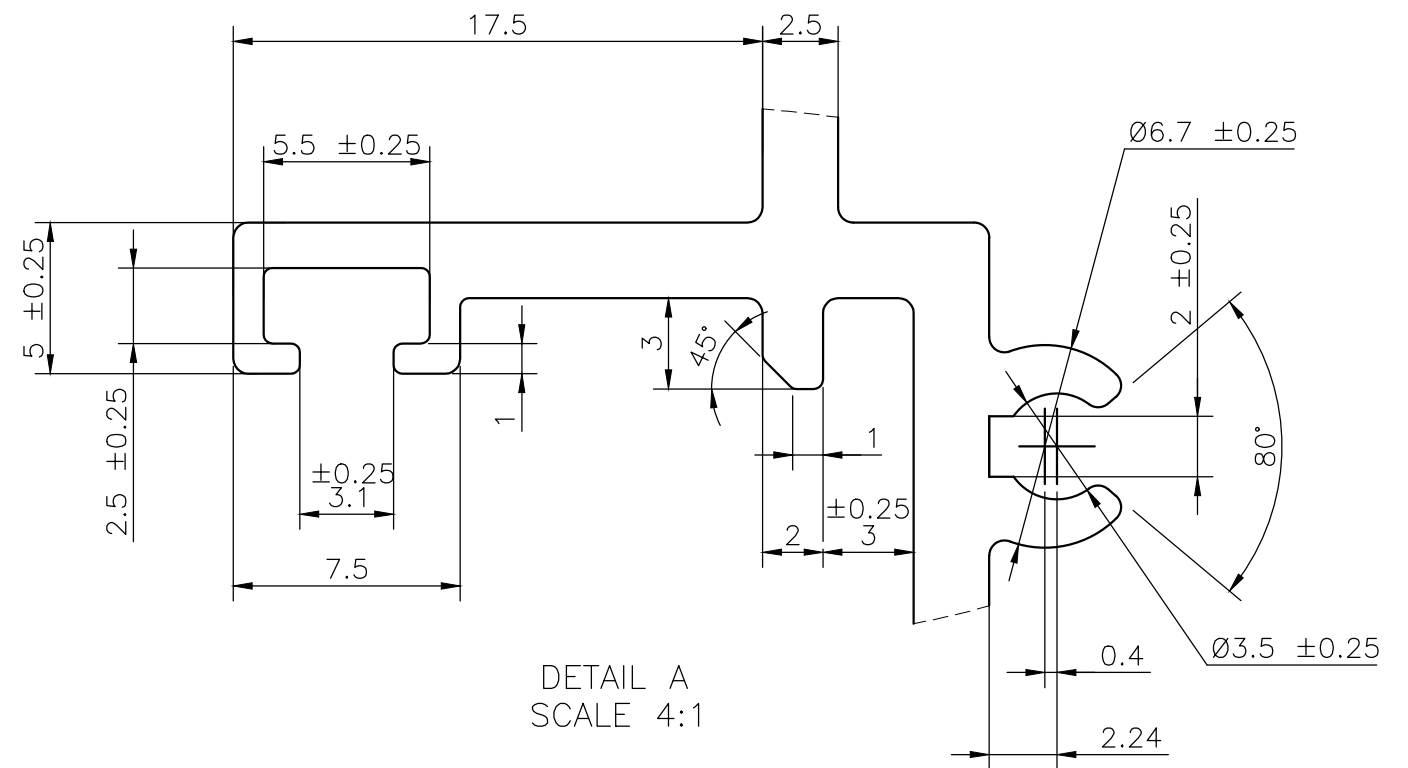
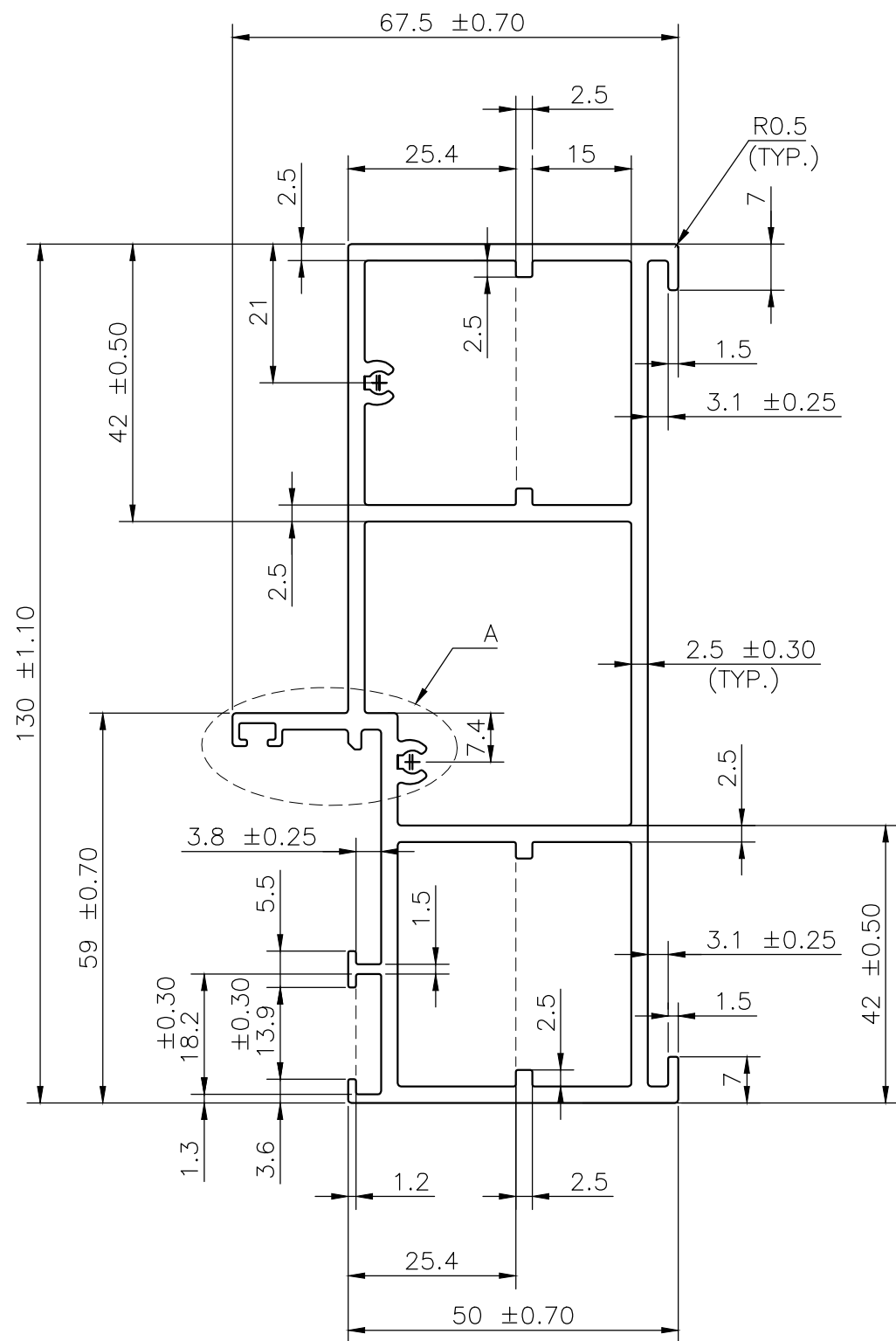



IAL-D-7449

D7449



TWIST= $\pm 1/4^{\circ}/300\text{M.M./M.}$
 FLATNESS= $\text{WIDTH} \times 0.005\text{mm.}$
 STRAIGHTNESS= 1.5 M.M./MTR.
 ANGULARITY= $\pm 1.5^{\circ}$

 SYMBOL OF QUALITY AN ISO 9001 COMPANY	JINDAL ALUMINIUM LTD. BANGALORE-560073 (INDIA)	NAME	DATE
		DRAWN	ASHUTOSH 13-06-2022
		CHECKED	
		APPROVED	
1. ALL DIMENSIONS ARE IN mm. 2. ROUND OFF ALL SHARP CORNERS WITH 0.40 mm. 3. TOLERANCES WILL BE AS PER BS:EN-755-9 , UNLESS OTHERWISE SPECIFIED		SCALE	1:1&4:1
		AREA mm ²	1205.50
		PERIMETER mm.	469.00
		WEIGHT kg/m	3.255
PARTY'S NAME	M/S. AAP DIVISION	DRAWING No.	SECTION No.
PARTY'S DRAWING No.	AS PER DRAWING	IAL-D-7449	-
ALLOY & TEMPER	6063-T6	D7449	D7449
DESCRIPTION	WINDOW SECTION		