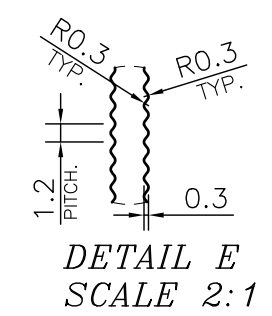
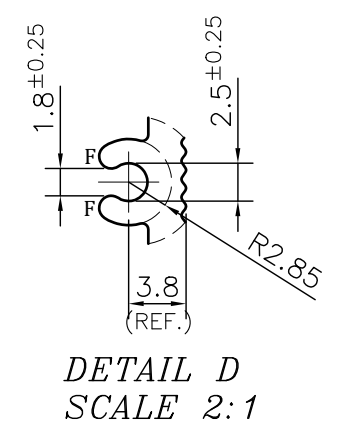
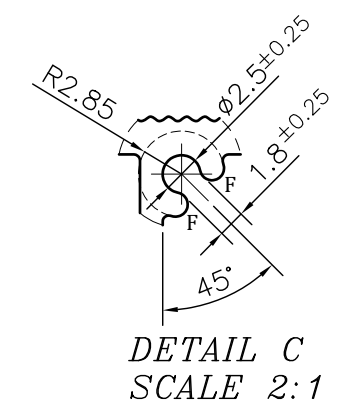
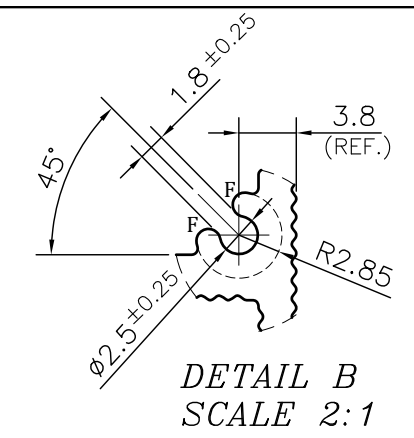
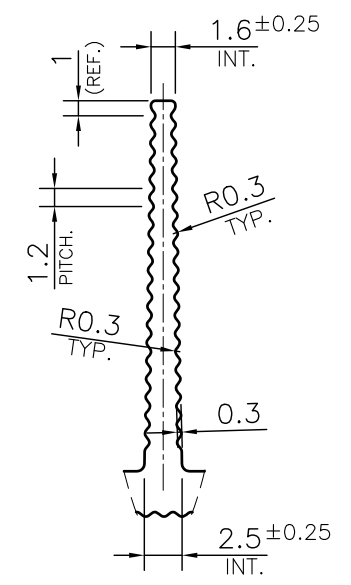
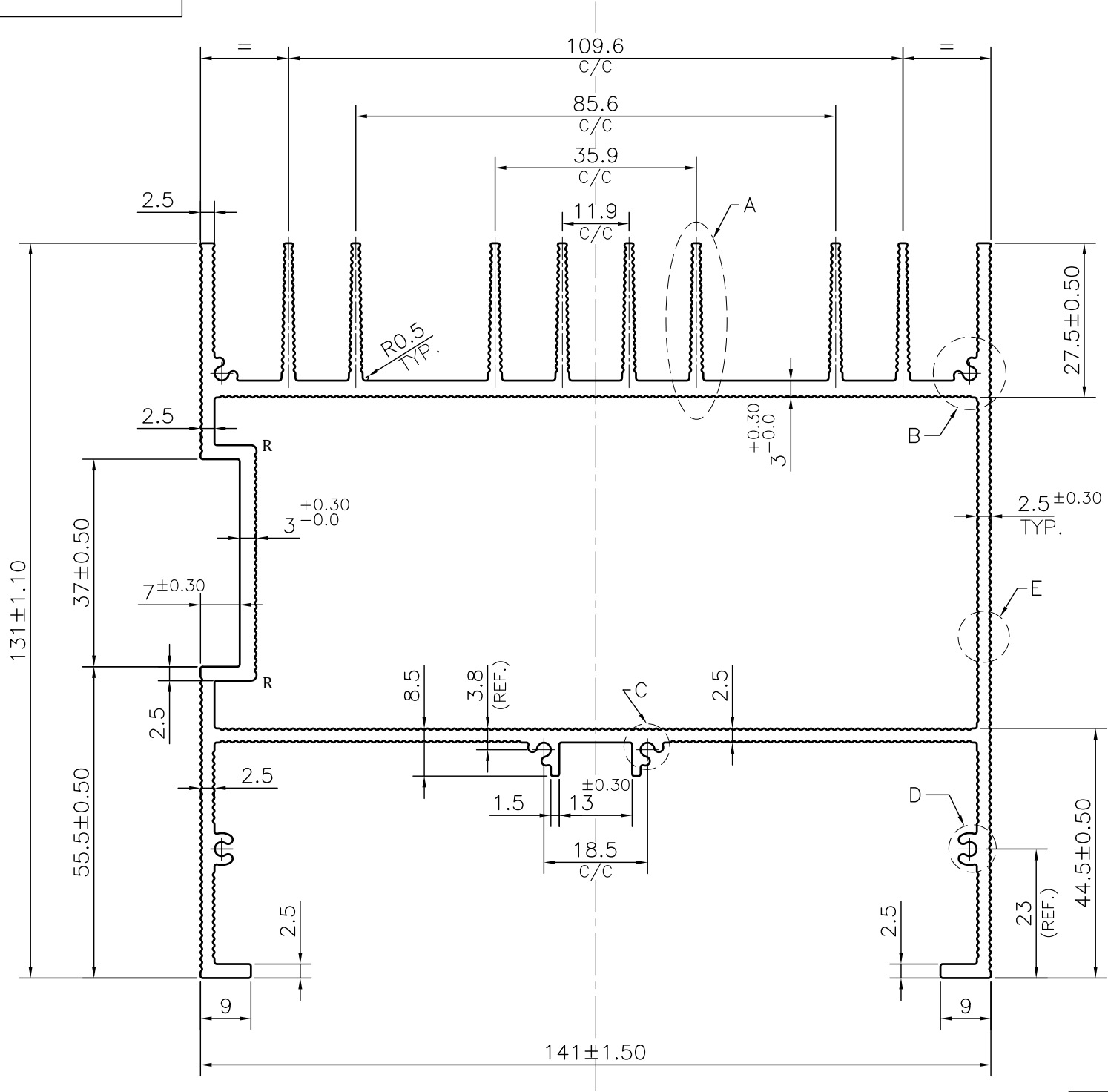


MAL NO.-17829
D7466



NOTE:-
R= 1.0 RADIUS (2 PLACES)
F= FULL RADIUS (12 PLACES)

1. STRAIGHTNESS= 1.7mm/M
2. TWIST= 1.7mm/M
3. ANGULARITY= $\pm 2^\circ$
4. FLATNESS= ± 1.1 mm

<p>SYMBOL OF QUALITY AN ISO 9001 COMPANY</p>	<p>JINDAL ALUMINIUM LTD. BHIWADI-301019 (INDIA)</p>	NAME	DATE
		DRAWN	ASHUTOSH 29-03-2024
<p>1. ALL DIMENSIONS ARE IN mm. 2. ROUND OFF ALL SHARP CORNERS WITH 0.40 mm. 3. TOLERANCES WILL BE AS PER IS: 3965-1981 , UNLESS OTHERWISE SPECIFIED</p>		CHECKED	
		APPROVED	
<p>PARTY'S NAME KOHLI ALUMINIUM</p>		SCALE	1:1
		AREA mm ²	1783.5
<p>PARTY'S DRAWING No. AS PER DRAWING</p>		PERIMETER mm.	1265.355
		WEIGHT kg/m	4.815
<p>ALLOY & TEMPER 6063 T6</p>		DRAWING No.	SECTION No.
		MAL NO.-17829	-
<p>DESCRIPTION HEAT SINK SECTION</p>		D7466	D7466
		PRODUCT CODE:-081	
		HSN CODE:- 76042100	