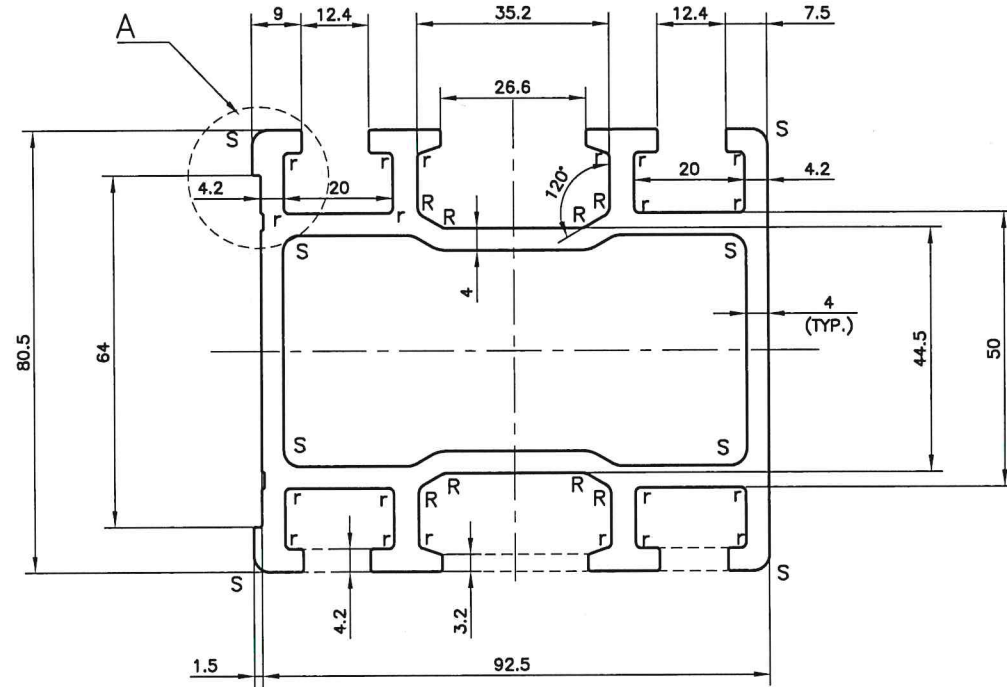
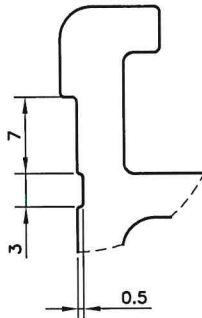


P-JAL-B-002

D-7511




NOTE:-  
 r= 1.00R  
 R= 2.00R  
 S= 3.00R



DETAIL-A  
 SCALE 2:1

ISSUE-2  
 DATE-15.03.2023-  
 DRAWING HAS BEEN REVISED

 SYMBOL OF QUALITY AN ISO 9001 COMPANY	<b>JINDAL ALUMINIUM LTD.</b> BANGALORE-560073 (INDIA)		DRAWN ASHUTOSH	NAME ASHUTOSH	DATE 11-05-2022
	1. ALL DIMENSIONS ARE IN mm. 2. ROUND OFF ALL SHARP CORNERS WITH 0.40 mm. 3. TOLERANCES WILL BE AS PER BS:EN 755-9 , UNLESS OTHERWISE SPECIFIED		CHECKED Jindal	APPROVED Jindal	15/3/23 18/05/23
PARTY'S NAME M/s. JAL BHIWADI		SCALE 1:1&2:1		AREA mm <sup>2</sup> 1835.12	
PARTY'S DRAWING No. AS PER SAMPLE-P3 (PRESS NO. BP3)		PERIMETER mm. 610.17		WEIGHT kg/m 4.955	
ALLOY & TEMPER 6063 T6		DRAWING No. P-JAL-B-002		SECTION No. D-7511	
DESCRIPTION CONVEYER SECTION		-		ISSUE-2	