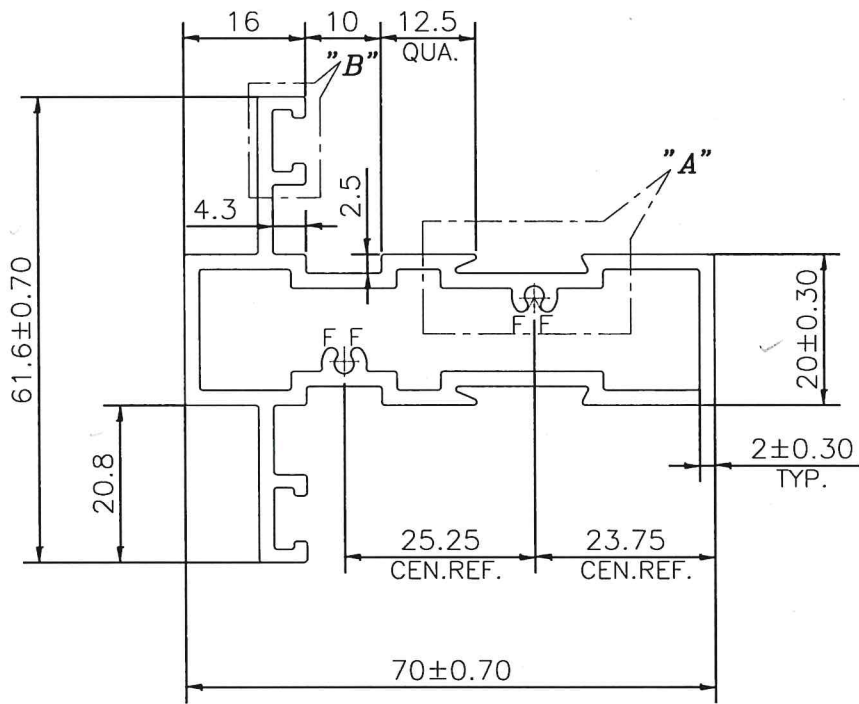
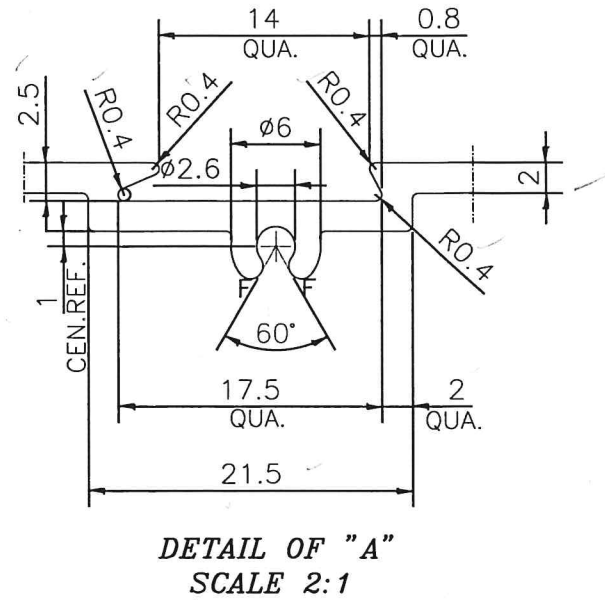
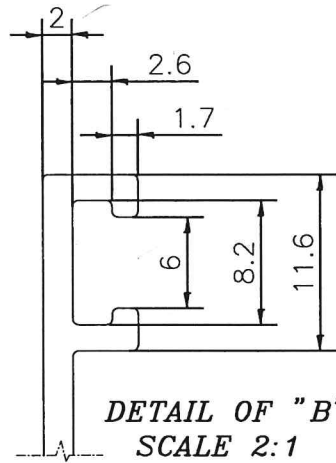


P-24268


D-7523



F=FULL RADIUS (4 PLACES)

- 1. STRAIGHTNESS= 1.7mm/M
- 2. TWIST= 1.7mm/M
- 3. ANGULARITY= ±2'
- 4. FLATNESS= 0.007xWIDTH

1) THE WELDING LINE IN THE EXPOSED SURFACE OF PROFILE IS UNAVOIDABLE. 2) PLEASE SPECIFY IMPORTANT SIZES. 3) PLEASE SPECIFY IF THIS PROFILE MATCHES WITH OTHER PROFILES. 4) PLEASE SPECIFY EXPOSED SURFACE. OTHER WISE CONSIDERED AS NO EXPOSED SURFACE. 5) FINISH :-  MILL FINISH /  ANODIZING /  POWDER COATING

 SYMBOL OF QUALITY AN ISO 9001 COMPANY	<b>JINDAL ALUMINIUM LTD.</b> BANGALORE-560073 (INDIA)		NAME	DATE
			DRAWN	SURENDRA
1. ALL DIMENSIONS ARE IN mm. 2. ROUND OFF ALL SHARP CORNERS WITH 0.40 mm. 3. TOLERANCES WILL BE AS PER IS:6477-1983 , UNLESS OTHERWISE SPECIFIED			CHECKED	<i>sunil</i> 22.7.22
			APPROVED	<i>Prav</i> 22.7.22
PARTY'S NAME ATC., DELHI			SCALE	1:1
			AREA mm <sup>2</sup>	533.272
PARTY'S DRAWING No. HEAVIER THAN 21106			PERIMETER mm.	328.841
			WEIGHT kg/m	1.440
ALLOY & TEMPER 6063 T6			DRAWING No.	SECTION No.
			P-24268	D-7523
DESCRIPTION WINDOW SECTION			PRODUCT CODE:-048 HSN CODE:-76042100	