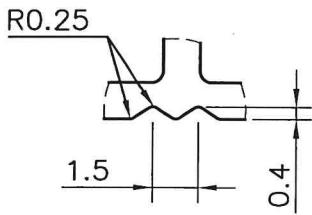
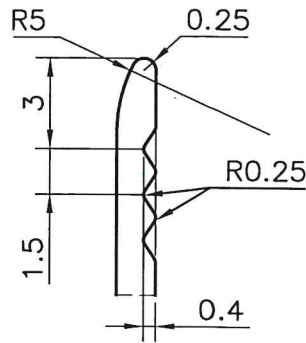


P-JAL-B-046-1

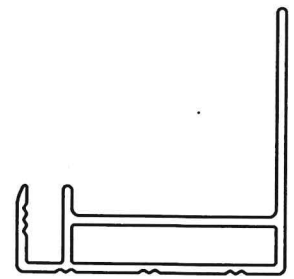
D-7530



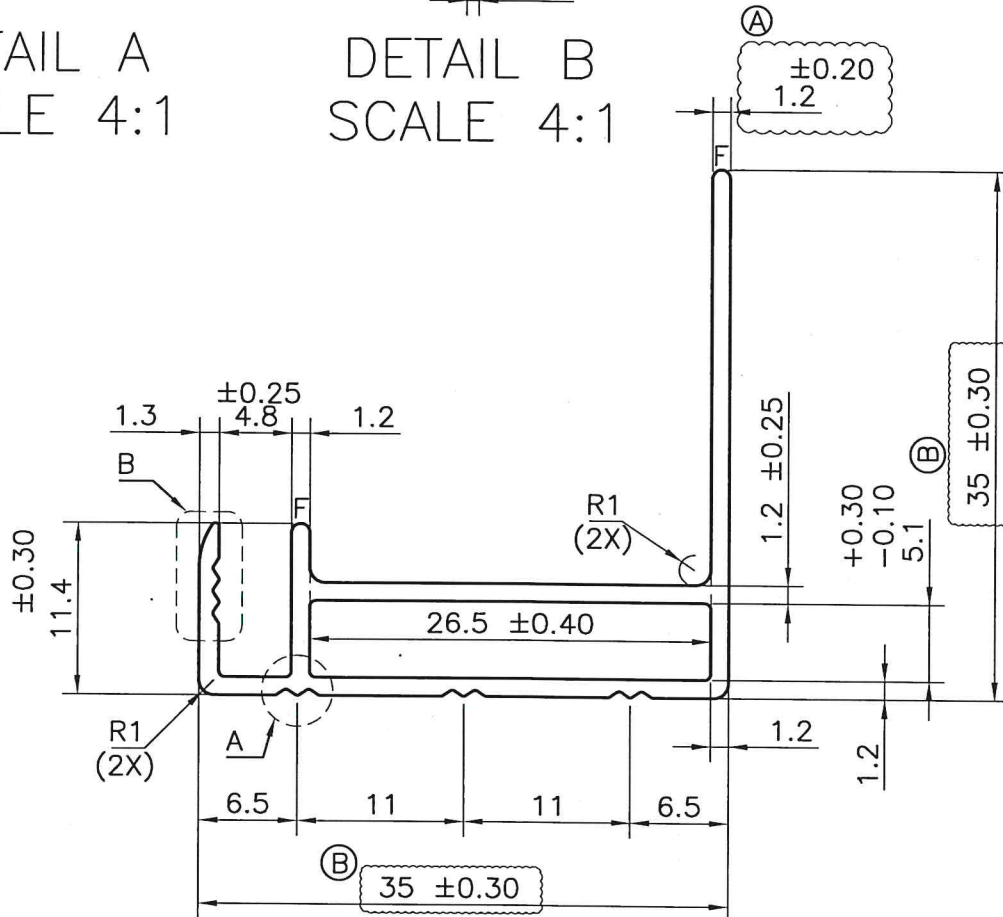
DETAIL A
SCALE 4:1



DETAIL B
SCALE 4:1



SCALE 1:1



NOTE:-
F= FULL RADIUS

NOTE:-

- (A) Dim. 1.2 ± 0.20 was 1.3 ± 0.25
- (B) Dim. 35 ± 0.30 was 35 ± 0.40



SYMBOL OF QUALITY
AN ISO 9001 COMPANY

JINDAL ALUMINIUM LTD.
BHIWADI-301019 (INDIA)

	NAME	DATE
DRAWN	ASHUTOSH	08-11-2022
CHECKED	<i>June</i>	10-11-22
APPROVED	<i>Tha</i>	10-11-22
SCALE		1:1&2:1
AREA	mm ²	136.19
PERIMETER	mm.	166.28
WEIGHT	kg/m	0.368
DRAWING No.		SECTION No.
P-JAL-B-046-1		D-7530

1. ALL DIMENSIONS ARE IN mm.
2. ROUND OFF ALL SHARP CORNERS WITH 0.40 mm.
3. TOLERANCES WILL BE AS PER BS:EN-755-9 , UNLESS OTHERWISE SPECIFIED

PARTY'S NAME	M/s. GAUTAM SOLAR
PARTY'S DRAWING No.	AS PER MAIL (10.10.2022)
ALLOY & TEMPER	6063-T6
DESCRIPTION	--