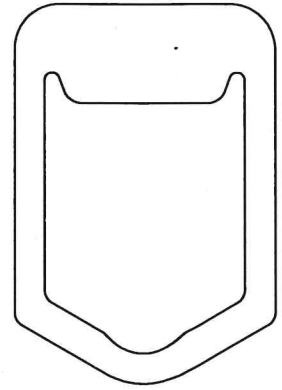


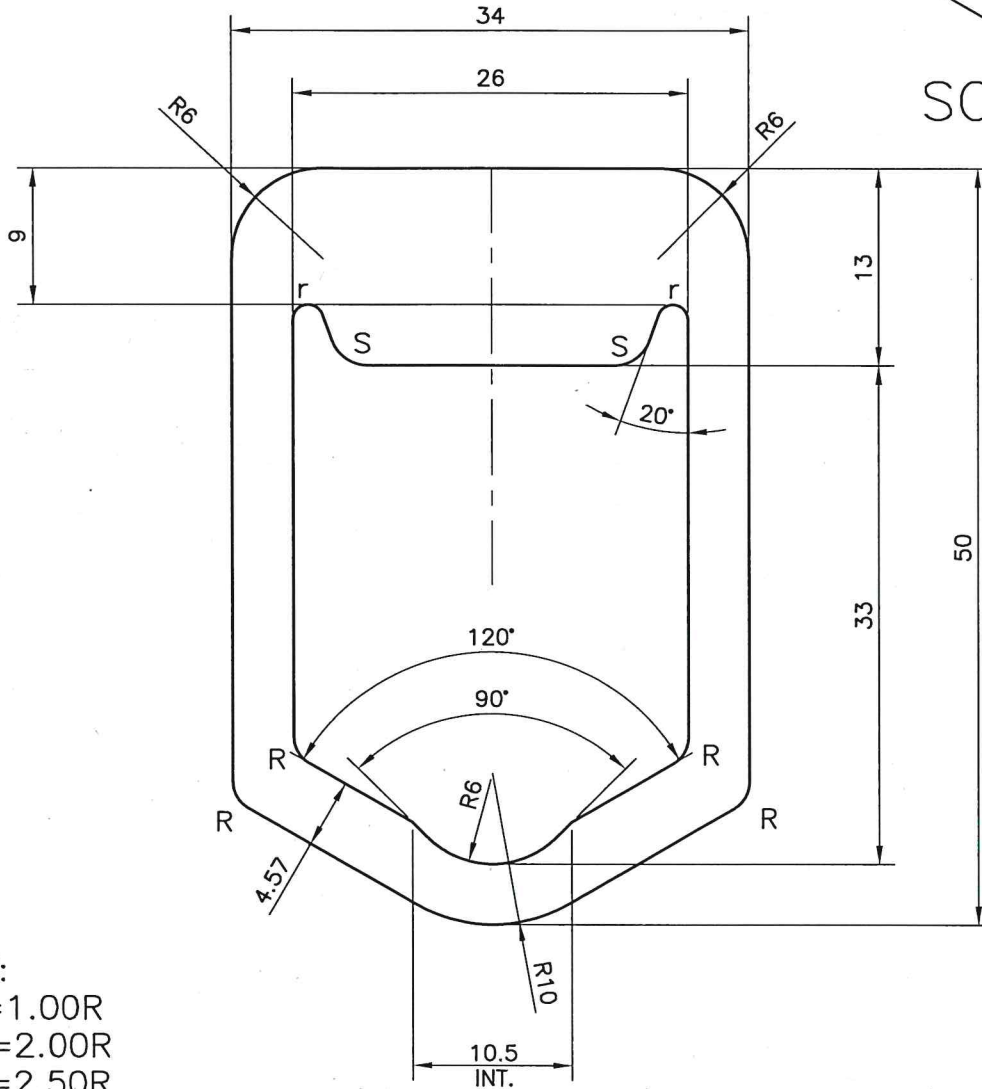
P-JAL-B-111

BEFORE APPROVAL CHECK ALL DIMENSIONS PROPERLY

D-7556



SCALE 1:1



NOTE:

- r=1.00R
- R=2.00R
- S=2.50R



SYMBOL OF QUALITY
AN ISO 9001 COMPANY

JINDAL ALUMINIUM LTD.
BHIWADI-301019 (INDIA)

	NAME	DATE
DRAWN	ASHUTOSH	23-01-2023
CHECKED	<i>Sunil</i>	28-1-23
APPROVED	<i>Jagan</i>	28/01/23

1. ALL DIMENSIONS ARE IN mm.
2. ROUND OFF ALL SHARP CORNERS WITH 0.40 mm.
3. TOLERANCES WILL BE AS PER EN-755-9, UNLESS OTHERWISE SPECIFIED

SCALE	1:1&2:1
AREA mm ²	773.71
PERIMETER mm.	150.07
WEIGHT kg/m	2.090

PARTY'S NAME	M/s. R+V INTERNATIONAL CO.	DRAWING No.	P-JAL-B-111	SECTION No.	D-7556
PARTY'S DRAWING No.	AS PER DRAWING -R+V 225EL (Q00293)				
ALLOY & TEMPER	6082-T6				
DESCRIPTION	-				