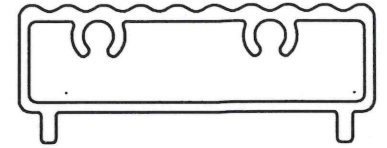
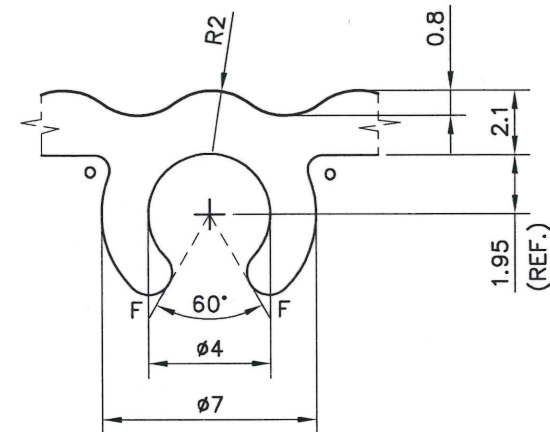


P-JAL-B-156

BEFORE APPROVAL CHECK ALL DIMENSIONS PROPERLY



SCALE 1:1



DETAIL A
SCALE 4:1

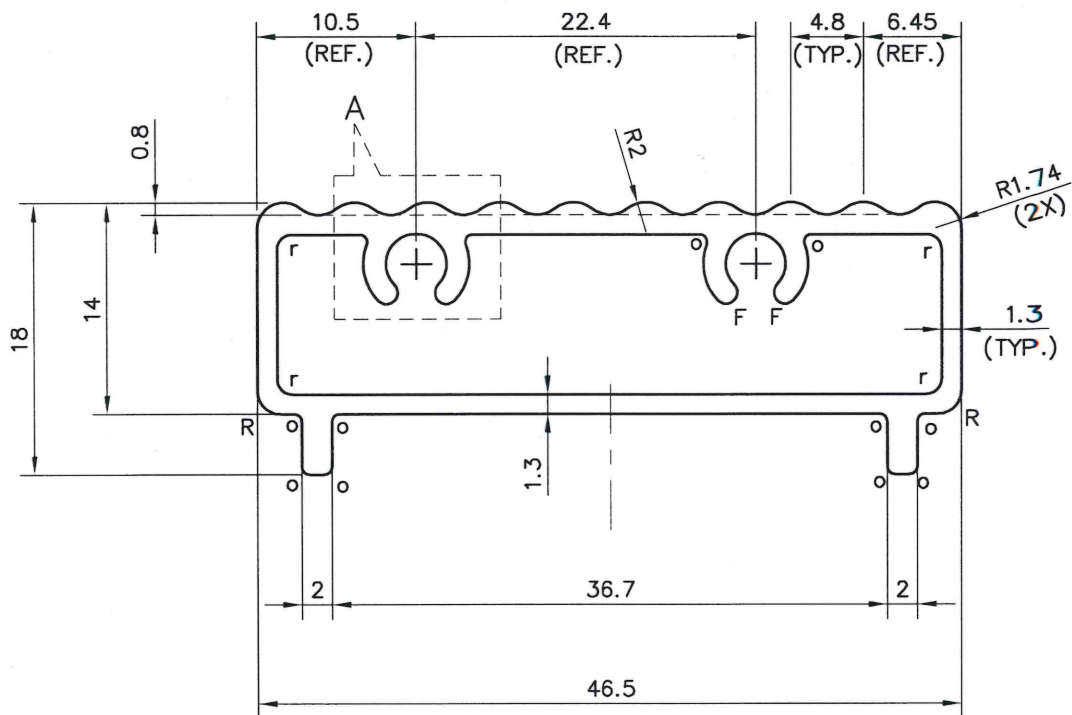
NOTE:-

$\phi = 0.50$ Radius (12 Place)

$r = 1.0$ Radius (4 Places)

$R = 1.50$ Radius (2 Places)

$F =$ Full Radius (4 Places)



SYMBOL OF QUALITY
AN ISO 9001 COMPANY

JINDAL ALUMINIUM LTD.
BHIWADI-301019 (INDIA)

		NAME	DATE
DRAWN	ASHUTOSH		04-04-2023
CHECKED	<i>Amil</i>		24-4-23
APPROVED	<i>Pran</i>		24-4-23
SCALE			1:1,2:1&4:1
AREA	mm ²		213.95
PERIMETER	mm.		135.88
WEIGHT	kg/m		0.578
DRAWING No.		SECTION No.	
P-JAL-B-156		D-7588	
-		-	

- ALL DIMENSIONS ARE IN mm.
- ROUND OFF ALL SHARP CORNERS WITH 0.40 mm.
- TOLERANCES WILL BE AS PER BS:EN-755-9, UNLESS OTHERWISE SPECIFIED

PARTY'S NAME	M/s. SHANKAR FENESTRATIONS & GLASSES (I) PVT. LTD.
PARTY'S DRAWING No.	AS PER DRAWING-THRESHOLD (Q00472)
ALLOY & TEMPER	6063-T6
DESCRIPTION	WINDOW SECTION