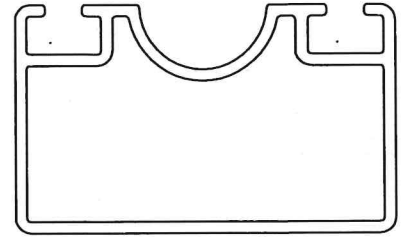


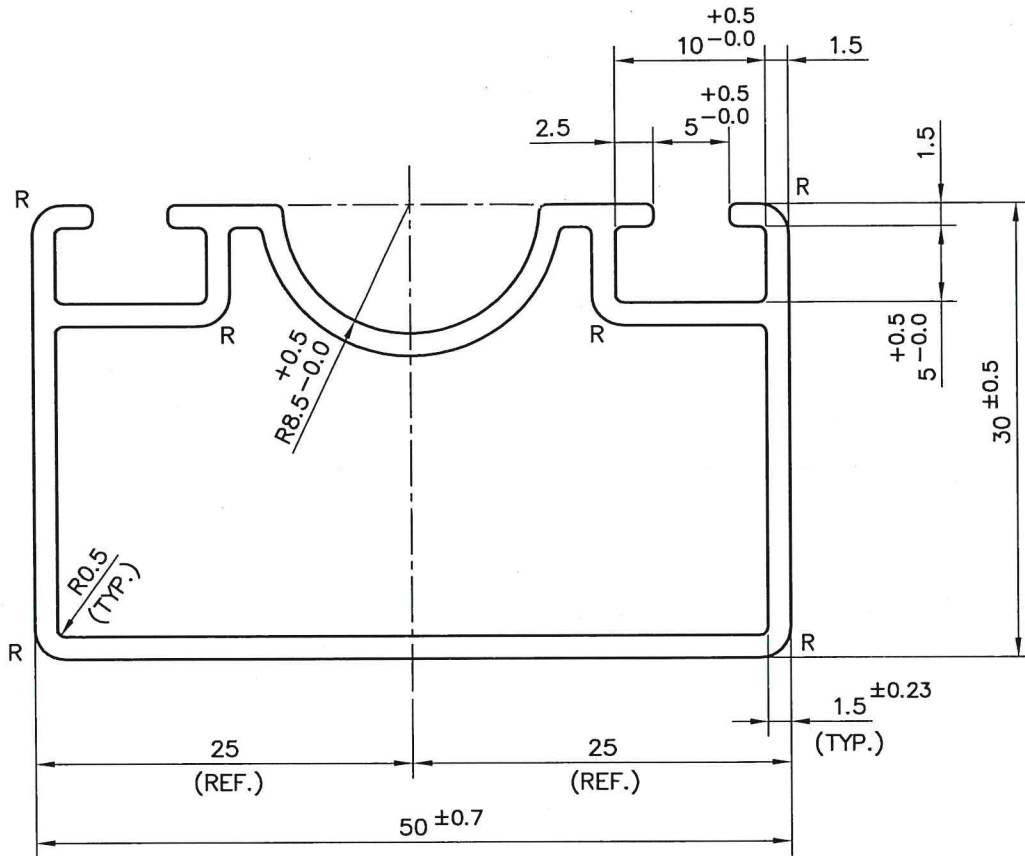
P-JAL-B-182

BEFORE APPROVAL CHECK ALL DIMENSIONS PROPERLY

D-7595



SCALE 1:1



NOTE:-

R= RADIUS 2 mm (6 PLACES)

1. STRAIGHTNESS= 1.7mm/M
2. TWIST= 1.7mm/M
3. ANGULARITY= ±2'
4. FLATNESS= 0.007xWIDTH

1) THE WELDING LINE IN THE EXPOSED SURFACE OF PROFILE IS UNAVOIDABLE. 2) PLEASE SPECIFY IMPORTANT SIZES. 3) PLEASE SPECIFY IF THIS PROFILE MATCHES WITH OTHER PROFILES. 4) PLEASE SPECIFY EXPOSED SURFACE. OTHER WISE CONSIDERED AS NO EXPOSED SURFACE. 5) FINISH :-  MILL FINISH /  ANODIZING /  POWDER COATING



SYMBOL OF QUALITY  
AN ISO 9001 COMPANY

**JINDAL ALUMINIUM LTD.**  
BHIWADI-301019 (INDIA)

	NAME	DATE
DRAWN	AMIT	13-04-2023
CHECKED	<i>Junit</i>	21/5/23
APPROVED	<i>Phan</i>	02/05/23
SCALE	1:1 & 2:1	
AREA mm <sup>2</sup>	274.35	
PERIMETER mm.	208.434	
WEIGHT kg/m	0.741	
DRAWING No.	SECTION No.	
P-JAL-B-182	D-7595	
-		
-		

1. ALL DIMENSIONS ARE IN mm.
2. ROUND OFF ALL SHARP CORNERS WITH 0.40 mm.
3. TOLERANCES WILL BE AS PER BS:EN-755-9 , UNLESS OTHERWISE SPECIFIED

PARTY'S NAME	M/s. JAGATSUKH GROUP, LUDHIANA
PARTY'S DRAWING No.	AS PER DRAWING (P2302830) - Q00449
ALLOY & TEMPER	6063-T6
DESCRIPTION	MISCELLANEOUS TUBE