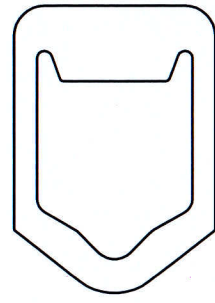
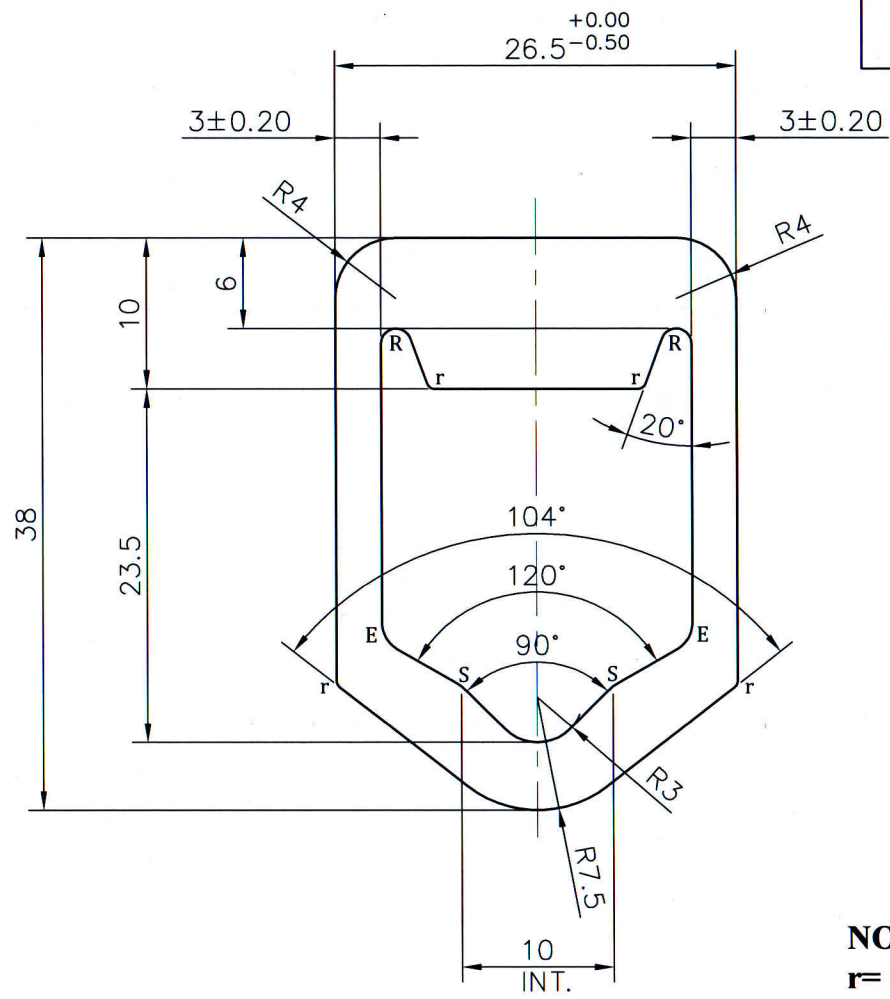


P-JAL-B-222
D-7598



SCALE 1:1




NOTE:-

- r= 0.50 RADIUS (4 PLACES)**
- R= 1.0 RADIUS (2 PLACES)**
- E= 2.0 RADIUS (2 PLACES)**
- S= 3.0 RADIUS (2 PLACES)**

1. STRAIGHTNESS= 1.7mm/M
2. TWIST= 1.7mm/M
3. ANGULARITY= ±2°
4. FLATNESS= 0.007xWIDTH

(Q00621)

 SYMBOL OF QUALITY AN ISO 9001 COMPANY	JINDAL ALUMINIUM LTD. BHIWADI-301019 (INDIA)	NAME		DATE
		DRAWN	ASHUTOSH	01-06-2023
1. ALL DIMENSIONS ARE IN mm. 2. ROUND OFF ALL SHARP CORNERS WITH 0.40 mm. 3. TOLERANCES WILL BE AS PER BS:EN-755-9 , UNLESS OTHERWISE SPECIFIED		CHECKED	<i>Jindal</i>	16-6-23
		APPROVED	<i>RJD</i>	16/6/23
PARTY'S NAME M/s. R+V INTERNATIONAL CO., LUDHIANA		SCALE		2:1
		AREA mm ²		479.45
PARTY'S DRAWING No. AS PER DRAWING		PERIMETER mm.		114.19
		WEIGHT kg/m		1.295
ALLOY & TEMPER 6082-T6		DRAWING No.		SECTION No.
		P-JAL-B-222		
DESCRIPTION INDUSTRIAL MISC. SECTION		D-7598		D-7598