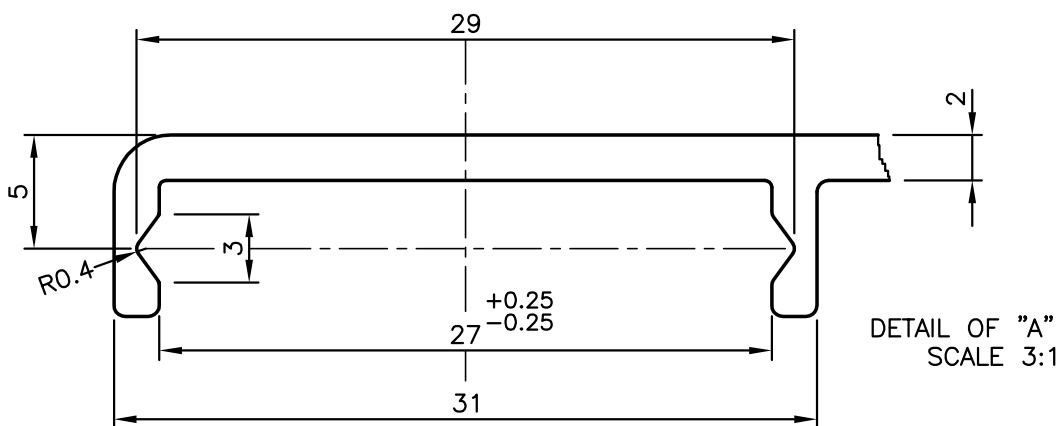
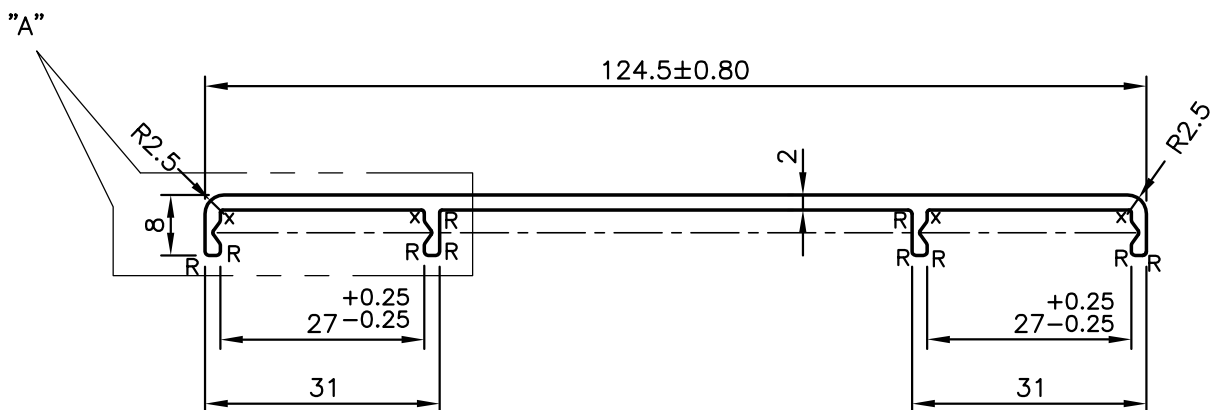
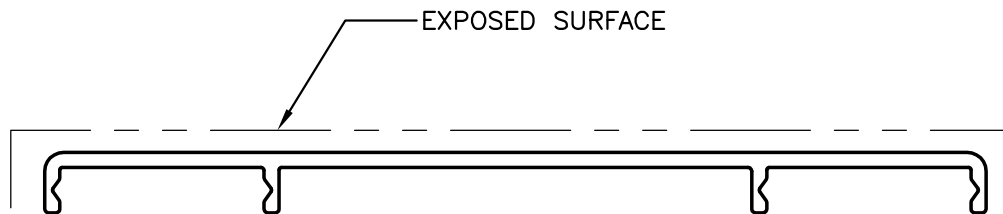


P-11504

E0040



x = 0.3 RADII (4 PLACES)  
 R = 0.5 RADII (10 PLACES)



SYMBOL OF QUALITY  
 AN ISO 9001 COMPANY

**JINDAL ALUMINIUM LTD.**  
 BANGALORE-560073 (INDIA)

|                      | NAME        | DATE       |
|----------------------|-------------|------------|
| DRAWN                | J.P.KAUSHIK | 25-01-2012 |
| CHECKED              |             |            |
| APPROVED             | S.S. GARG   | 21-02-2012 |
| SCALE                |             | 1:1        |
| AREA mm <sup>2</sup> |             | 287.532    |
| PERIMETER mm.        |             | 298.706    |
| WEIGHT kg/m          |             | 0.776      |
| DRAWING No.          | SECTION No. |            |
| P-11504              | -           |            |
| E0040                | E0040       |            |
|                      |             |            |
|                      |             |            |

1. ALL DIMENSIONS ARE IN mm.
2. ROUND OFF ALL SHARP CORNERS WITH 0.40 mm.
3. TOLERANCES WILL BE AS PER BS:EN-12020-2 UNLESS OTHERWISE SPECIFIED

|                     |                    |
|---------------------|--------------------|
| PARTY'S NAME        | COSIGN NV, BELGIUM |
| PARTY'S DRAWING No. | D2007_0468A        |
| ALLOY & TEMPER      | 6060 T66           |
| DESCRIPTION         | DISPLAY SECTION    |