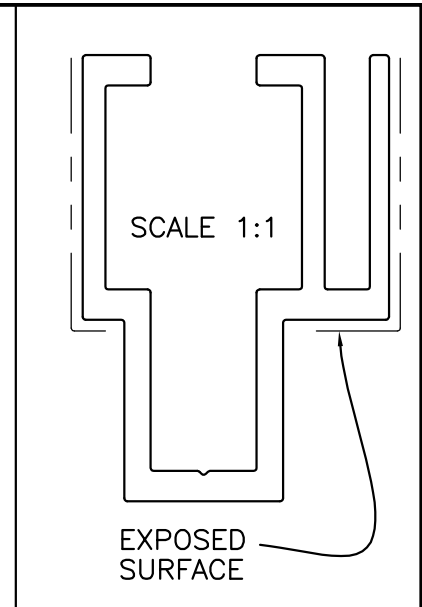
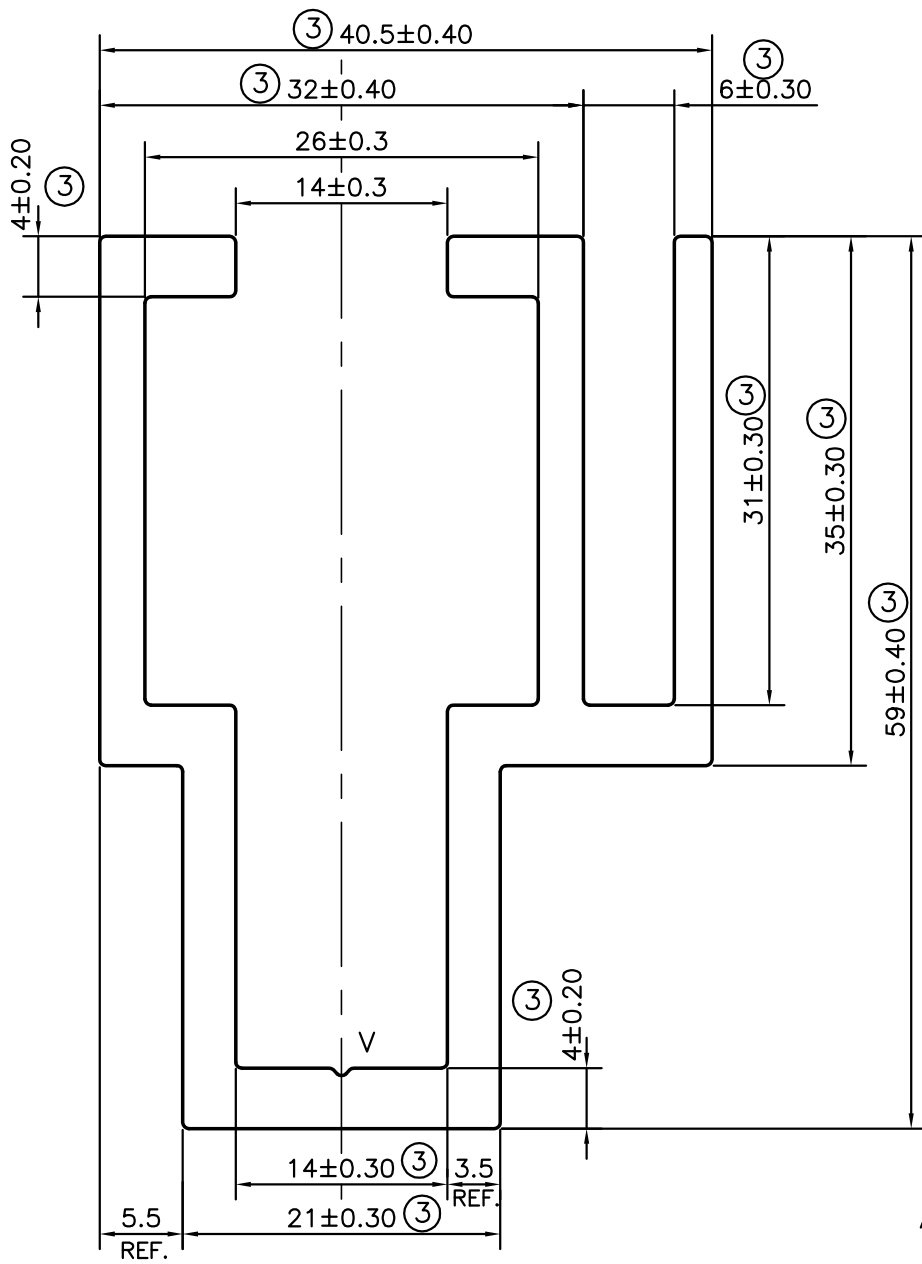


P-12379-1

E0093



ISSUE 2:-  
TOLERANCE ADDED ON:  
1. 40.5±0.50  
2. 32±0.50

ISSUE 3:-  
TOLERANCE CHANGED FROM :  
1. 40.5±0.50 TO 40.5±0.40  
2. 32±0.50 TO 32±0.40

TOLERANCE ADDED ON :  
1. 4±0.20  
2. 6±0.30  
3. 14±0.30  
4. 21±0.30  
5. 31±0.30  
6. 35±0.30  
7. 59±0.40

AS PER CUSTOMER REQUIREMENT.

V = 0.5X90° V-GROOVE (1 PLACE)



SYMBOL OF QUALITY  
AN ISO 9001 COMPANY

**JINDAL ALUMINIUM LTD.**  
BANGALORE-560073 (INDIA)

	NAME	DATE
DRAWN	SRIVATHSA	14-06-2013
CHECKED		
APPROVED	S.S.GARG	29-06-2013
SCALE		2:1
AREA mm <sup>2</sup>		640.947
PERIMETER mm.		391.225
WEIGHT kg/m		1.731
DRAWING No.		SECTION No.
P-12379-1		-
E0093		E0093(ISSUE-3)

1. ALL DIMENSIONS ARE IN mm.
2. ROUND OFF ALL SHARP CORNERS WITH 0.40 mm.
3. TOLERANCES WILL BE AS PER BS:EN-12020-2, UNLESS OTHERWISE SPECIFIED

PARTY'S NAME	DORMA INDIA PVT LTD., CHENNAI
PARTY'S DRAWING No.	8.15.245.001.00
ALLOY & TEMPER	6060 T66
DESCRIPTION	CARRIER PROFILE WITH BRUSH CHANNEL