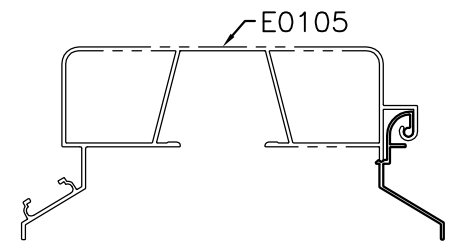
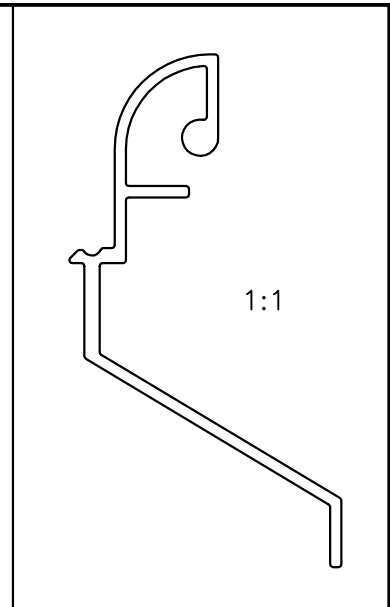
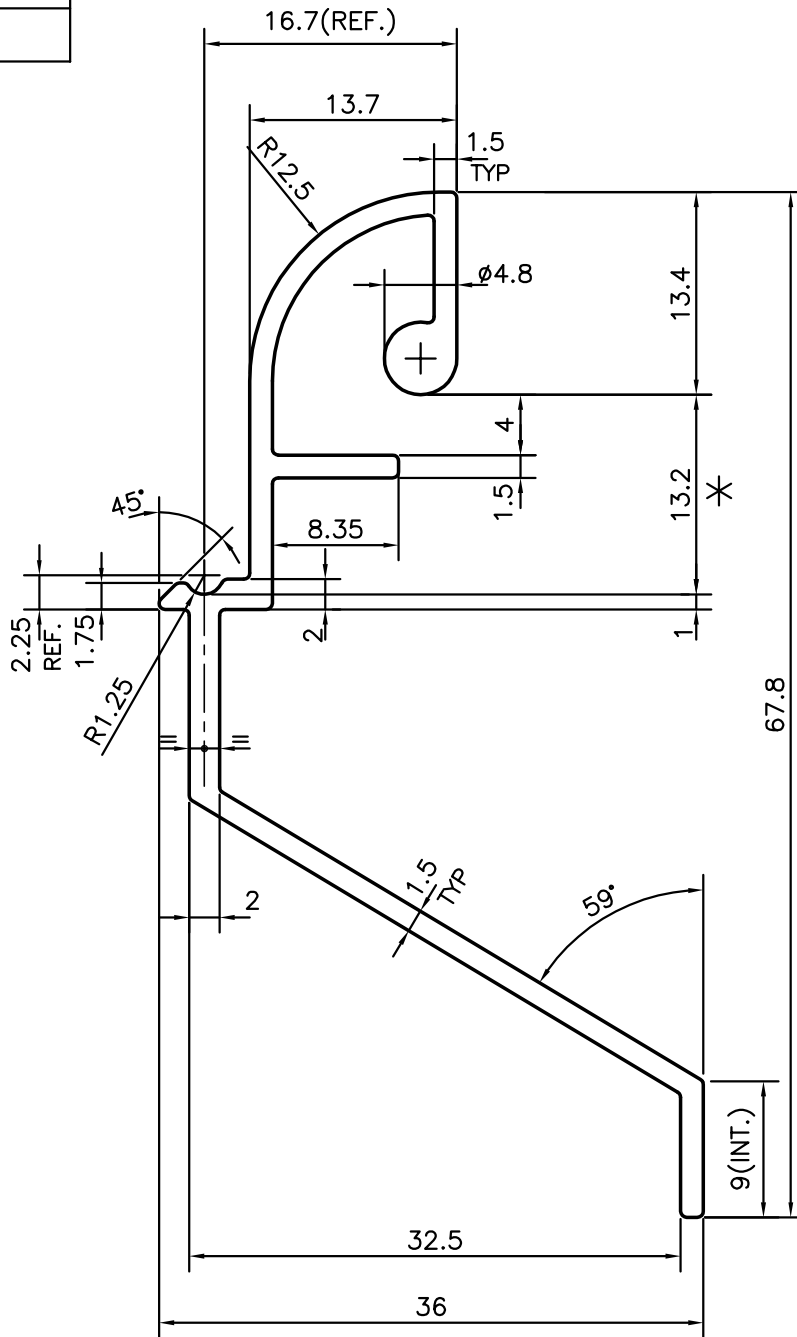


P-12645-2

E0106



* = MATCHING DIMENSION

UPTO 6.40mm - ±0.20	UPTO 32.0mm - ±0.38	UPTO 120.0mm - ±0.85	UPTO 320.00mm - ±1.70
UPTO 10.0mm - ±0.23	UPTO 50.0mm - ±0.46	UPTO 160.0mm - ±1.02	
UPTO 12.0mm - ±0.25	UPTO 60.0mm - ±0.53	UPTO 200.0mm - ±1.14	
UPTO 16.0mm - ±0.28	UPTO 80.0mm - ±0.69	UPTO 250.0mm - ±1.40	
UPTO 25.0mm - ±0.30	UPTO 100.0mm - ±0.75	UPTO 300.0mm - ±1.65	



SYMBOL OF QUALITY
AN ISO 9001 COMPANY

JINDAL ALUMINIUM LTD.
BANGALORE-560073 (INDIA)

	NAME	DATE
DRAWN	J.P.KAUSHIK	09-04-2013
CHECKED		
APPROVED	S.S.GARG	16-04-2013
SCALE		2:1
AREA mm ²		197.395
PERIMETER mm.		242.059
WEIGHT kg/m		0.533
DRAWING No.	SECTION No.	
P-12645-2	-	
E0106	E0106	

- ALL DIMENSIONS ARE IN mm.
- ROUND OFF ALL SHARP CORNERS WITH 0.40 mm.
- TOLERANCES WILL BE AS PER IS:3965-1981, UNLESS OTHERWISE SPECIFIED

PARTY'S NAME	SAVEER BIOTECH LTD., NOIDA
PARTY'S DRAWING No.	SKYSV/IIM/01 SOLID
ALLOY & TEMPER	HE9 WP
DESCRIPTION	ALUMINIUM PAD FRAME