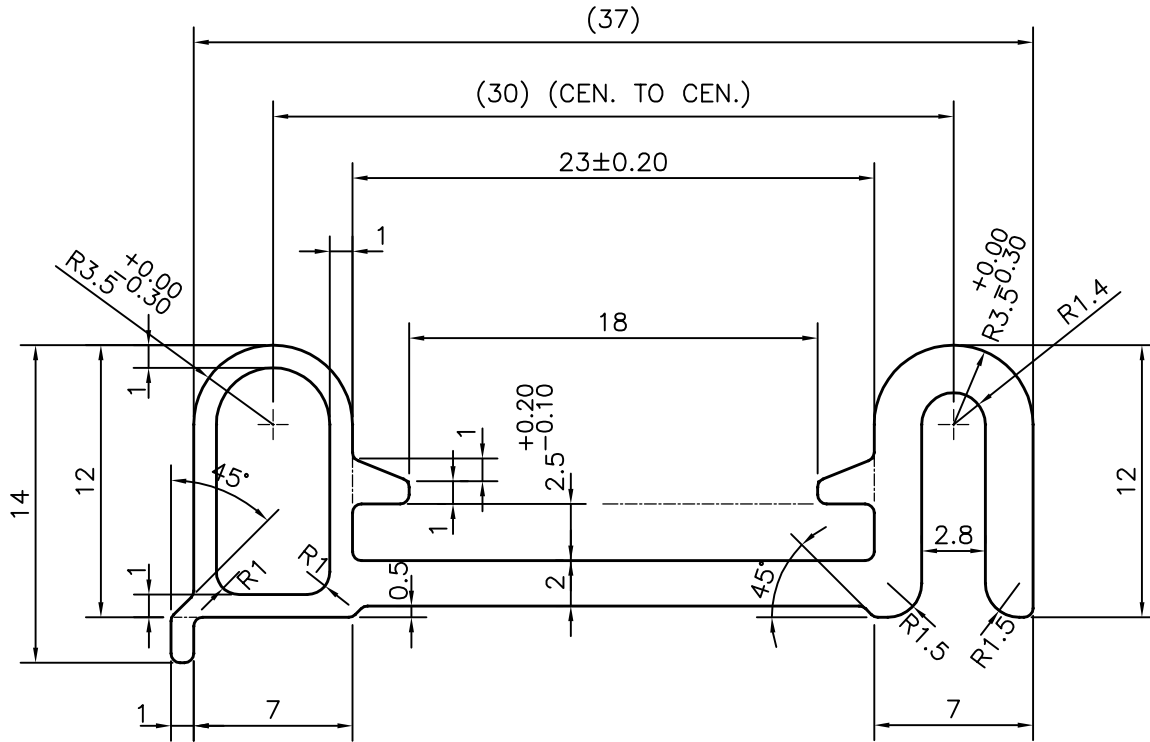
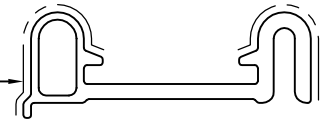


P-12850-2

E0126

EXPOSED SURFACE



TOLERANCE CHART CD = CIRCUMSCRIBING CIRCLE

	CD ≤ 100	100 < CD ≤ 200	200 < CD < 300	300 < CD < 500
UPTO 10mm	- ±0.25	±0.30	±0.35	±0.40
10.0 - 25.0	- ±0.30	±0.40	±0.50	±0.60
25.0 - 50.0	- ±0.50	±0.60	±0.80	±0.90
50.0 - 100.0	- ±0.70	±0.90	±1.10	±1.30
100 - 150	- -	±1.10	±1.30	±1.50
150 - 200	- -	±1.3	±1.50	±1.80
200 - 300	- -	-	±1.70	±2.10
300 - 450	- -	-	-	±2.80



SYMBOL OF QUALITY  
AN ISO 9001 COMPANY

**JINDAL ALUMINIUM LTD.**  
BANGALORE-560073 (INDIA)

	NAME	DATE
DRAWN	J.P.KAUSHIK	12-10-2013
CHECKED		
APPROVED	S.S.GARG	09-12-2013
SCALE		3:1
AREA mm <sup>2</sup>		139.002
PERIMETER mm.		140.433
WEIGHT kg/m		0.375
DRAWING No.		SECTION No.
P-12850-2		-
E0126		E0126

- ALL DIMENSIONS ARE IN mm.
- ROUND OFF ALL SHARP CORNERS WITH 0.40 mm.
- TOLERANCES WILL BE AS PER BS:EN-755-9 UNLESS OTHERWISE SPECIFIED

PARTY'S NAME	HAFELE INDIA PVT LTD., MUMBAI
PARTY'S DRAWING No.	PR1070017A
ALLOY & TEMPER	6060 T6
DESCRIPTION	MISC. SECTION