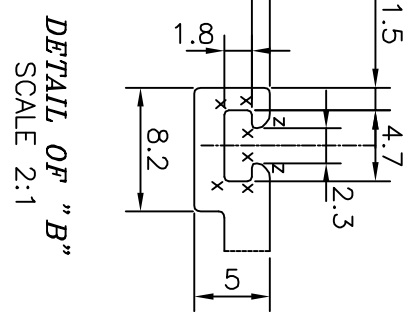
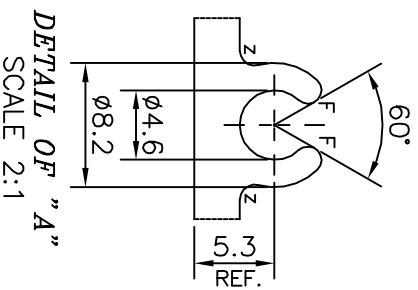


X = RADIUS 0.3 mm. (6 PLACES)
 Y = RADIUS 1.5 mm. (3 PLACES)
 Z = RADIUS 1 mm. (12 PLACES)
 ----- EXPOSED SURFACE



TOLERANCES ON OVERALL WIDTHS & WIDTHS ACROSS FLATS OF BARS, & REGULAR SECTIONS

UPTO 6.40mm - ±0.20	UPTO 32.0mm - ±0.38	UPTO 120.0mm - ±0.85
UPTO 10.0mm - ±0.23	UPTO 50.0mm - ±0.46	UPTO 160.0mm - ±1.02
UPTO 12.0mm - ±0.25	UPTO 60.0mm - ±0.53	UPTO 200.0mm - ±1.14
UPTO 16.0mm - ±0.28	UPTO 80.0mm - ±0.69	UPTO 250.0mm - ±1.40
UPTO 25.0mm - ±0.30	UPTO 100.0mm - ±0.75	UPTO 300.0mm - ±1.65

<p>SYMBOL OF QUALITY AN ISO 9001 COMPANY</p>	<p>JINDAL ALUMINIUM LTD. BANGALORE-560073 (INDIA)</p>	DRAWN	NAME	DATE
		CHECKED	PARVESH	03-12-2014
<p>1. ALL DIMENSIONS ARE IN mm. 2. ROUND OFF ALL SHARP CORNERS WITH 0.40 mm. 3. TOLERANCES WILL BE AS PER IS:3965-1981, UNLESS OTHERWISE SPECIFIED</p>		APPROVED	S.S.GARG	16-12-2014

PARTY'S NAME	ALUFIT (INDIA) PRIVATE LIMITED, BANGALORE	SCALE	1:1
PARTY'S DRAWING No.	AS PER AUTOCAD DRAWING-GD-25	AREA mm ²	1488.791
ALLOY & TEMPER	6063 T6	PERIMETER mm.	986.057
DESCRIPTION	CURTAIN WALL SECTION-CILL TRANSOM	WEIGHT kg/m	4.02
		DRAWING No.	SECTION No.
		P-14165	-
		E0233	E0233