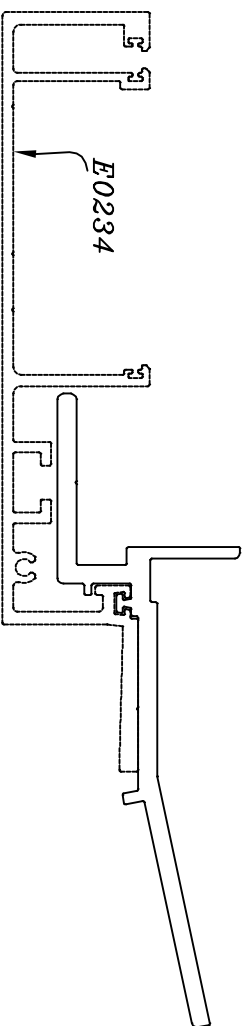
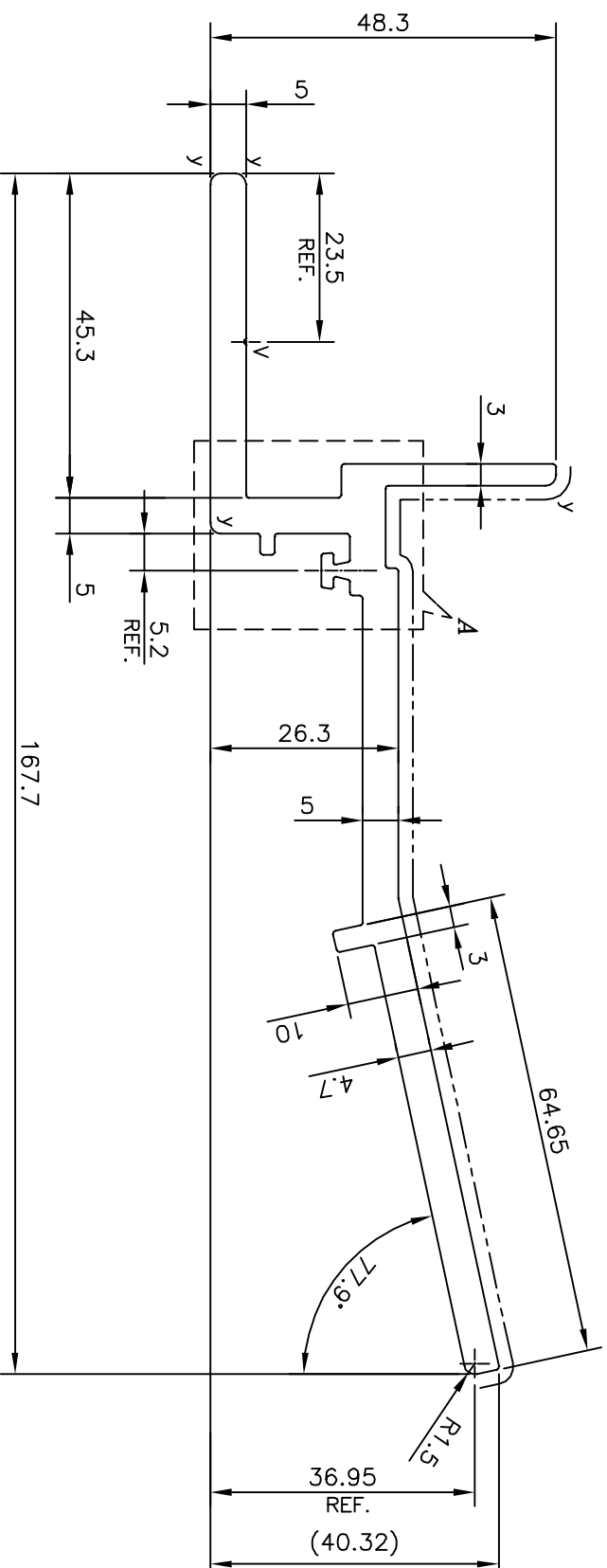


P-14167

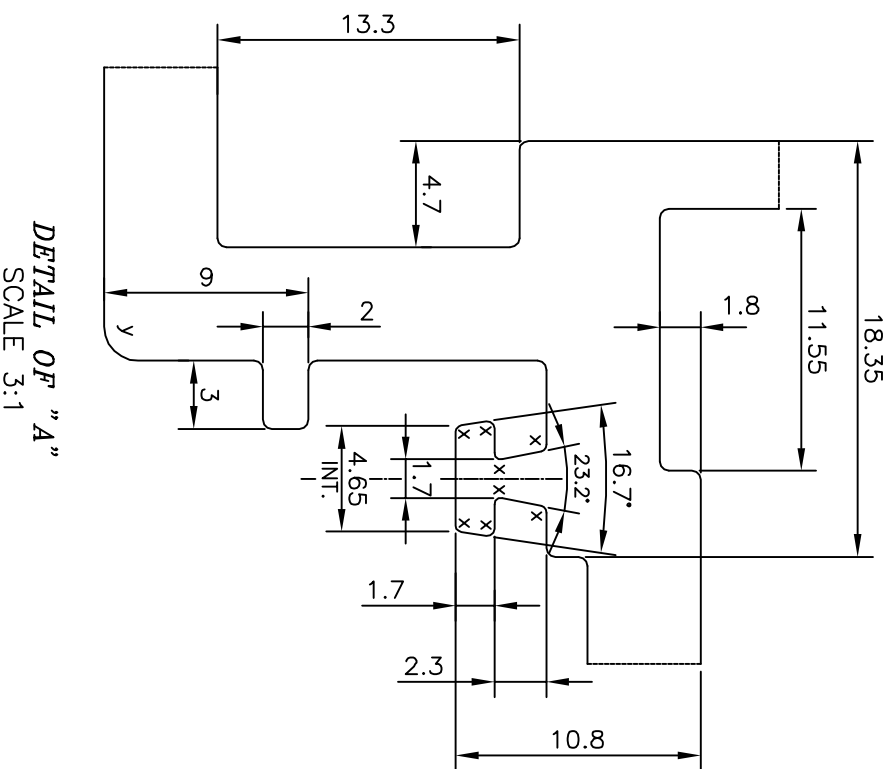
E0235



SCALE: - 0.5:1



V = VEE GROOVE 0.3x90° (1 PLACE)  
 X = RADIUS 0.3 mm. (8 PLACES)  
 Y = RADIUS 1.5 mm. (4 PLACES)  
 - - - - - EXPOSED SURFACE



DETAIL OF "A"  
 SCALE 3:1

TOLERANCES ON OVERALL WIDTHS & WIDTHS ACROSS FLATS OF BARS, & REGULAR SECTIONS

UPTO 6.40mm - ±0.20	UPTO 32.0mm - ±0.38	UPTO 120.0mm - ±0.85
UPTO 10.0mm - ±0.23	UPTO 50.0mm - ±0.46	UPTO 160.0mm - ±1.02
UPTO 12.0mm - ±0.25	UPTO 60.0mm - ±0.53	UPTO 200.0mm - ±1.14
UPTO 16.0mm - ±0.28	UPTO 80.0mm - ±0.69	UPTO 250.0mm - ±1.40
UPTO 25.0mm - ±0.30	UPTO 100.0mm - ±0.75	UPTO 300.0mm - ±1.65

<p>SYMBOL OF QUALITY                  AN ISO 9001 COMPANY</p>	<b>JINDAL ALUMINIUM LTD.</b> BANGALORE-560073 (INDIA)	
	DRAWN	NAME
CHECKED	PARVESH	DATE
APPROVED	S.S.GARG	16-12-2014

SCALE	1:1
AREA mm <sup>2</sup>	1063.984
PERIMETER mm.	469.605
WEIGHT kg/m	2.873

1. ALL DIMENSIONS ARE IN mm.	PARTY'S NAME	ALUFIT (INDIA) PRIVATE LIMITED, BANGALORE
2. ROUND OFF ALL SHARP CORNERS WITH 0.40 mm.	PARTY'S DRAWING No.	AS PER AUTOCAD DRAWING-GD-17
3. TOLERANCES WILL BE AS PER IS:3965-1981, UNLESS OTHERWISE SPECIFIED	ALLOY & TEMPER	6063 T6
	DESCRIPTION	CURTAIN WALL SECTION-SUNSHADE BKT.