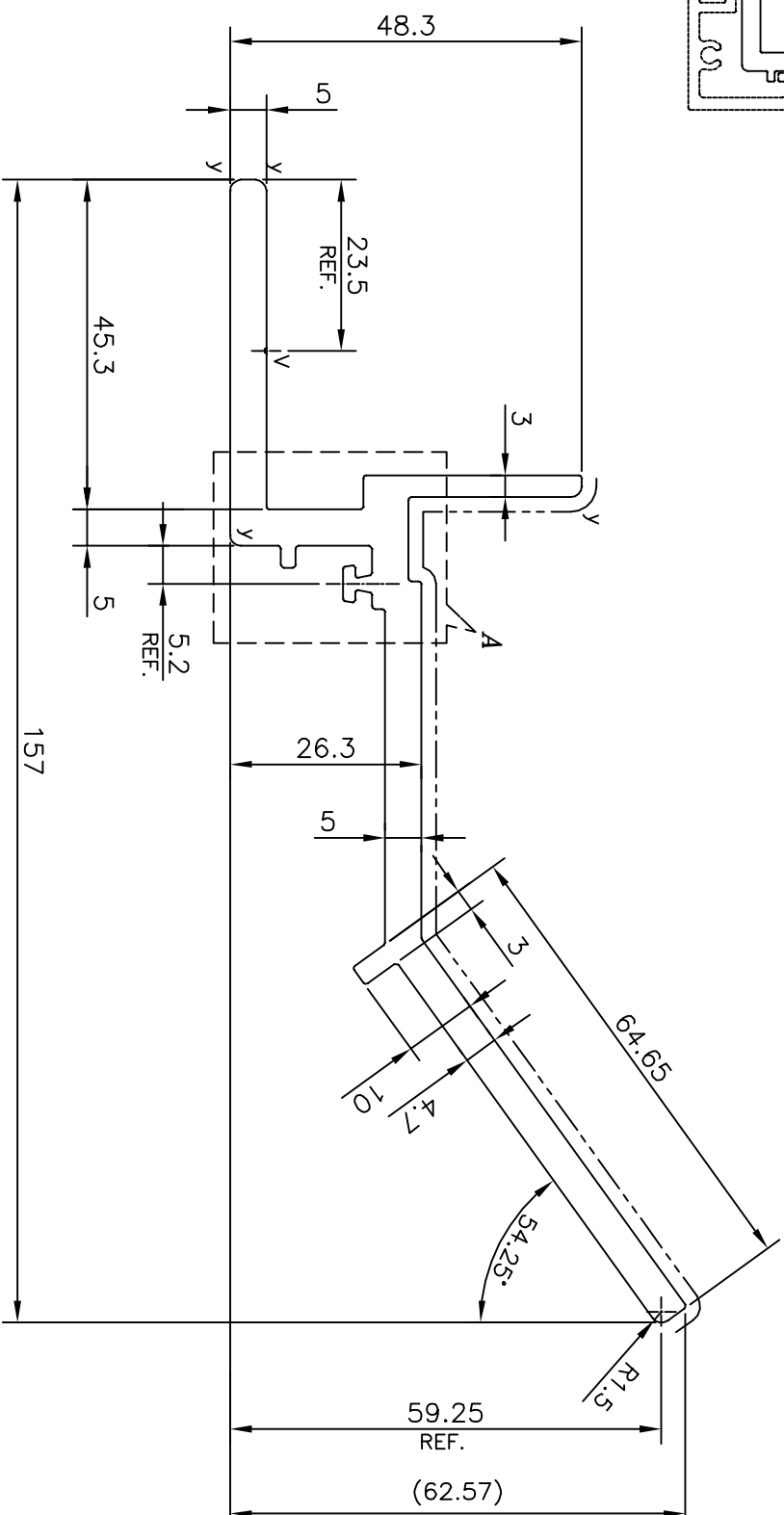
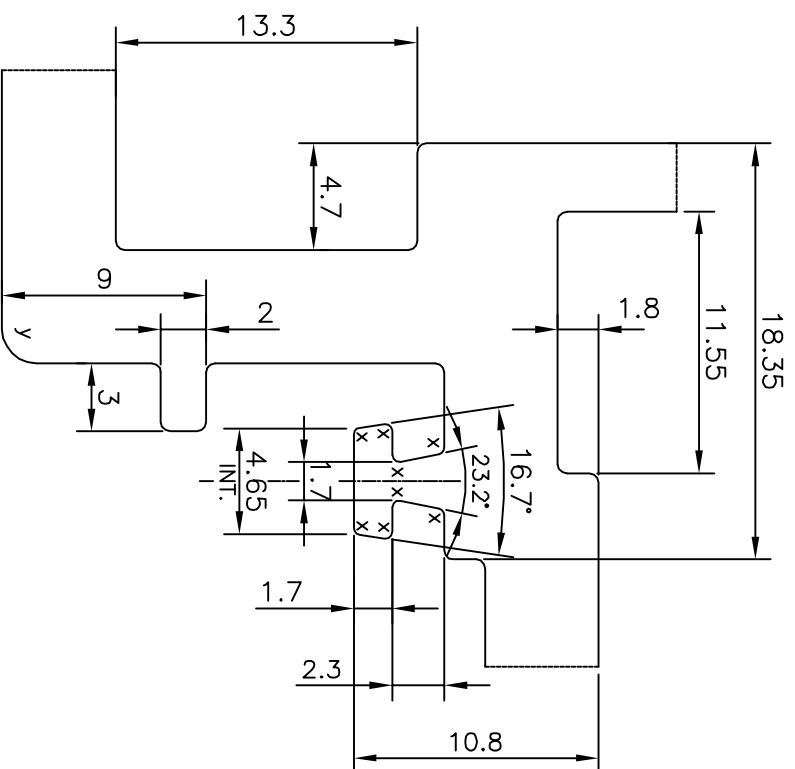


SCALE: - 0.5:1



V = VEE GROOVE 0.3x90° (1 PLACE)  
 X = RADIUS 0.3 mm. (8 PLACES)  
 Y = RADIUS 1.5 mm. (4 PLACES)  
 - - - - - EXPOSED SURFACE



DETAIL OF "A"  
 SCALE 3:1

TOLERANCES ON OVERALL WIDTHS & WIDTHS ACROSS FLATS OF BARS, & REGULAR SECTIONS			
UPTO 6.40mm - ±0.20	UPTO 32.0mm - ±0.38	UPTO 120.0mm - ±0.85	1. STRAIGHTNESS=1.7mm/M 2. TWIST=1.7mm/M 3. ANGULARITY= ±2° 4. FLATNESS =0.007xWIDTH
UPTO 10.0mm - ±0.23	UPTO 50.0mm - ±0.46	UPTO 160.0mm - ±1.02	
UPTO 12.0mm - ±0.25	UPTO 60.0mm - ±0.53	UPTO 200.0mm - ±1.14	
UPTO 16.0mm - ±0.28	UPTO 80.0mm - ±0.69	UPTO 250.0mm - ±1.40	
UPTO 25.0mm - ±0.30	UPTO 100.0mm - ±0.75	UPTO 300.0mm - ±1.65	

<p>SYMBOL OF QUALITY AN ISO 9001 COMPANY</p>		<p><b>JINDAL ALUMINIUM LTD.</b> BANGALORE-560073 (INDIA)</p>	
<p>1. ALL DIMENSIONS ARE IN mm. 2. ROUND OFF ALL SHARP CORNERS WITH 0.40 mm. 3. TOLERANCES WILL BE AS PER IS:3965-1981, UNLESS OTHERWISE SPECIFIED</p>			
PARTY'S NAME	ALUFIT (INDIA) PRIVATE LIMITED, BANGALORE	DRAWN	NAME
PARTY'S DRAWING No.	AS PER AUTOCAD DRAWING-GD-35	CHECKED	DATE
ALLOY & TEMPER	6063 T6	APPROVED	S.S.GARG
DESCRIPTION	CURTAIN WALL SECTION-SUNSHADE BKT.	SCALE	1:1
		AREA mm <sup>2</sup>	1059.045
		PERIMETER mm.	468.98
		WEIGHT kg/m	2.859
		DRAWING No.	P-14169
		SECTION No.	-
			E0237
			E0237