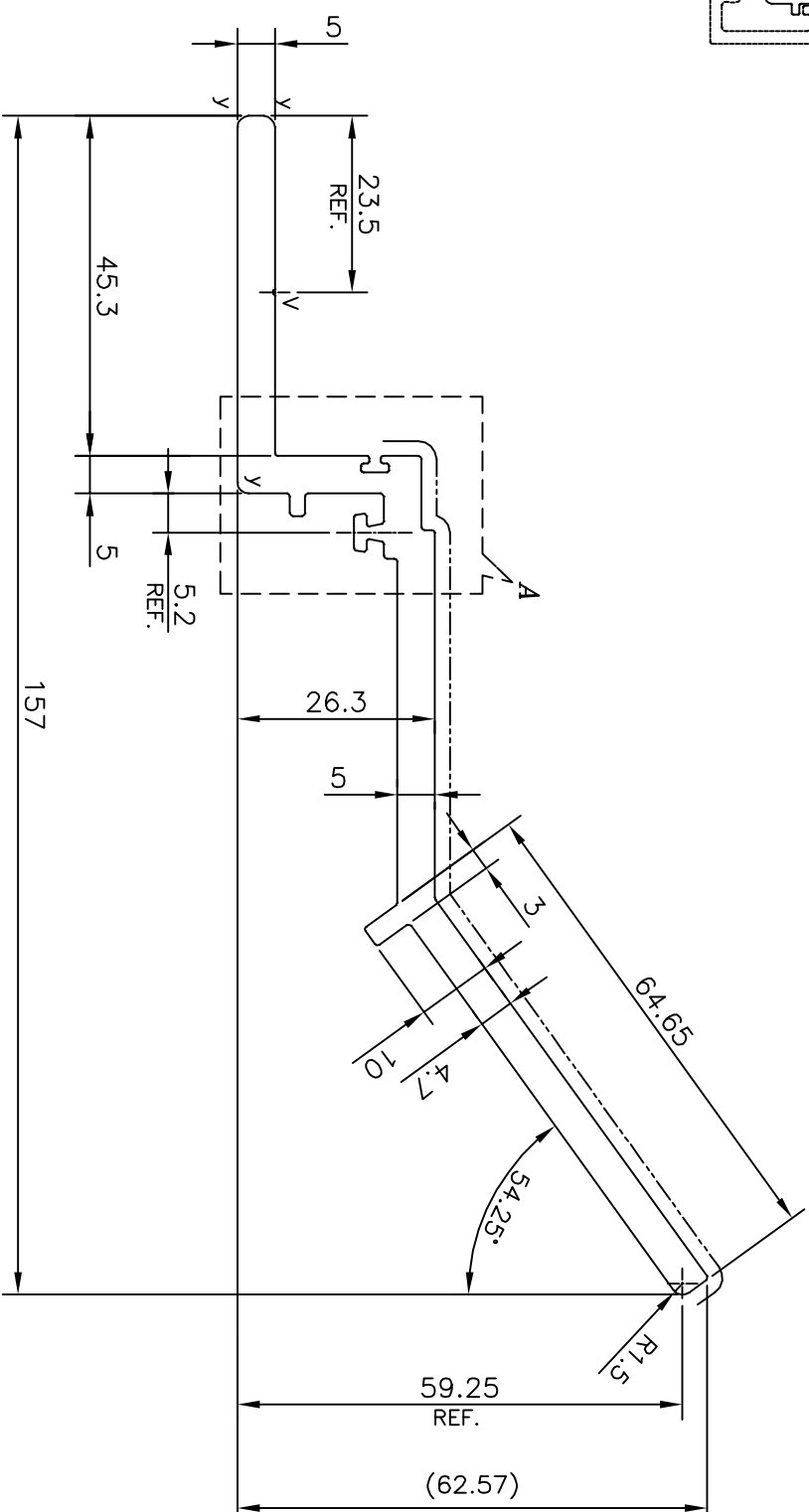
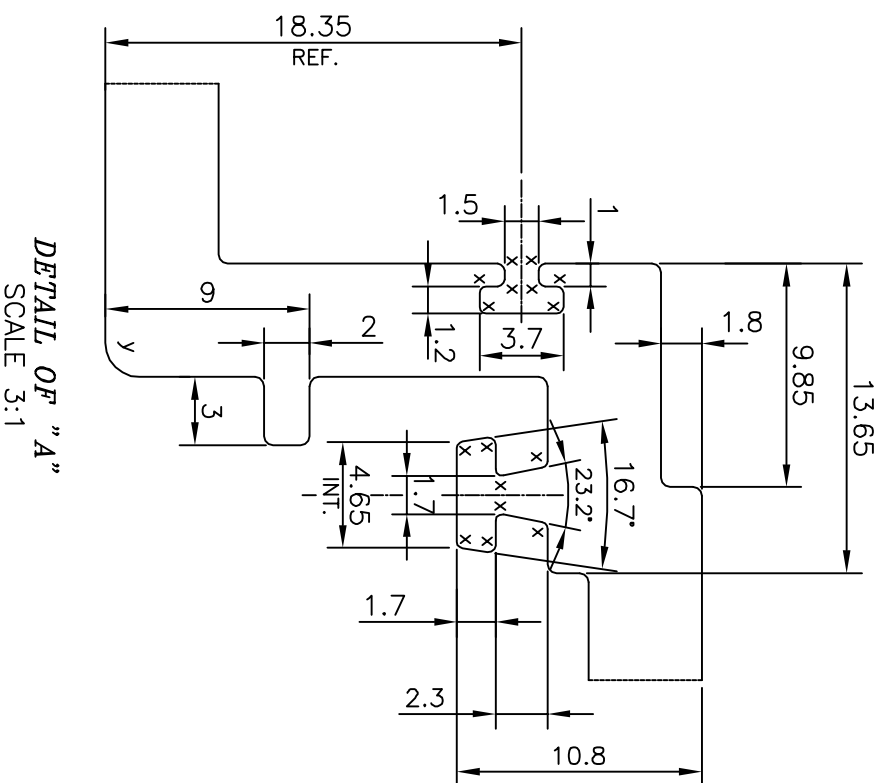


SCALE: - 0.5:1



V = VEE GROOVE 0.3x90° (1 PLACE)
 X = RADIUS 0.3 mm. (16 PLACES)
 Y = RADIUS 1.5 mm. (3 PLACES)
 - - - - - EXPOSED SURFACE



DETAIL OF "A"
 SCALE 3:1

| TOLERANCES ON OVERALL WIDTHS & WIDTHS ACROSS FLATS OF BARS, & REGULAR SECTIONS | | TOLERANCES ON OVERALL WIDTHS & WIDTHS ACROSS FLATS OF BARS, & REGULAR SECTIONS | |
|--|----------------------|--|--------------------------|
| UPTO 6.40mm - ±0.20 | UPTO 32.0mm - ±0.38 | UPTO 120.0mm - ±0.85 | 1. STRAIGHTNESS=1.7mm/M |
| UPTO 10.0mm - ±0.23 | UPTO 50.0mm - ±0.46 | UPTO 160.0mm - ±1.02 | 2. TWIST=1.7mm/M |
| UPTO 12.0mm - ±0.25 | UPTO 60.0mm - ±0.53 | UPTO 200.0mm - ±1.14 | 3. ANGULARITY= ±2° |
| UPTO 16.0mm - ±0.28 | UPTO 80.0mm - ±0.69 | UPTO 250.0mm - ±1.40 | 4. FLATNESS =0.007xWIDTH |
| UPTO 25.0mm - ±0.30 | UPTO 100.0mm - ±0.75 | UPTO 300.0mm - ±1.65 | |

| | | | |
|--|---|------------------------------|--|
| JINDAL | | JINDAL ALUMINIUM LTD. | |
| SYMBOL OF QUALITY AN ISO 9001 COMPANY | | BANGALORE-560073 (INDIA) | |
| 1. ALL DIMENSIONS ARE IN mm. 2. ROUND OFF ALL SHARP CORNERS WITH 0.40 mm. 3. TOLERANCES WILL BE AS PER IS:3965-1981 , UNLESS OTHERWISE SPECIFIED | | | |
| PARTY'S NAME | ALUFIT (INDIA) PRIVATE LIMITED, BANGALORE | | |
| PARTY'S DRAWING No. | AS PER AUTOCAD DRAWING-GD-36 | | |
| ALLOY & TEMPER | 6063 T6 | | |
| DESCRIPTION | CURTAIN WALL SECTION-SUNSHADE BKT. | | |
| DRAWN | NAME | DATE | |
| CHECKED | PARVESH | 03-12-2014 | |
| APPROVED | S.S.GARG | 16-12-2014 | |
| SCALE | | 1:1 | |
| AREA mm ² | | 953.013 | |
| PERIMETER mm. | | 420.909 | |
| WEIGHT kg/m | | 2.573 | |
| DRAWING No. | SECTION No. | | |
| P-14170 | - | | |
| E0238 | E0238 | | |