
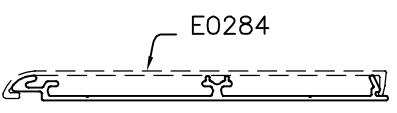
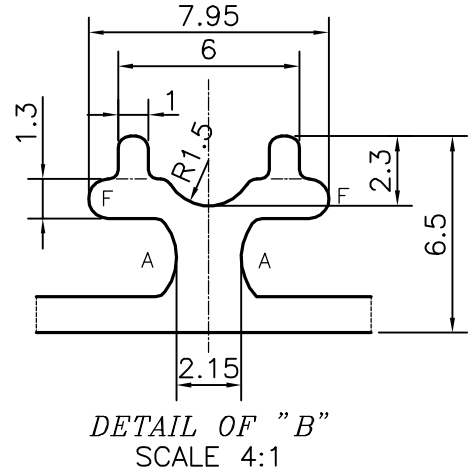
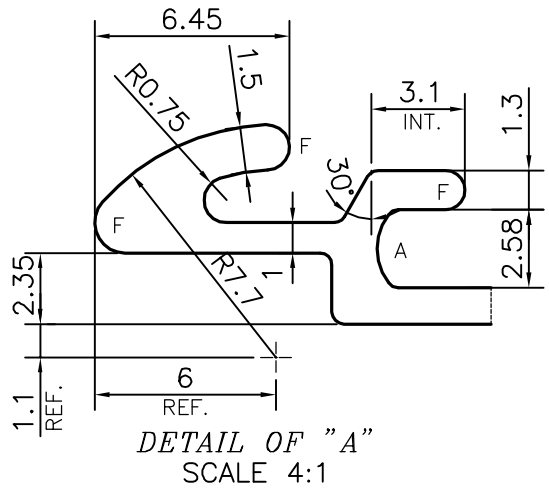
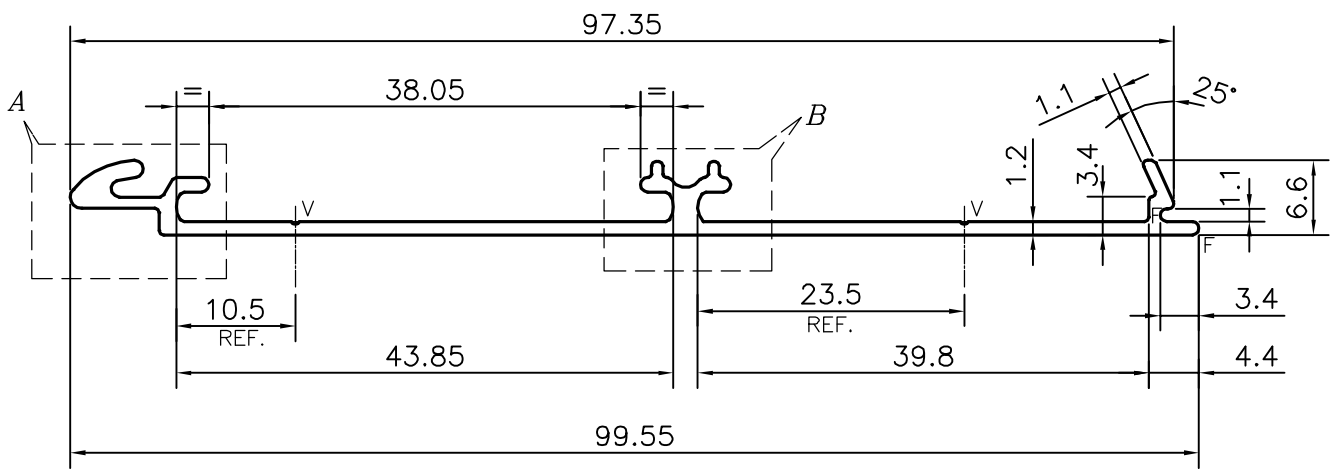



P-14435	E0284	 <p>SCALE: - 1:1</p>
E0283		



A = RADIUS 1.91 (3 PLACES)
 F = FULL RADIUS (7 PLACES)
 V = VEE GROOVE 0.25x90° (2 PLACES)

TOLERANCES ON OVERALL WIDTHS & WIDTHS ACROSS FLATS OF BARS, & REGULAR SECTIONS			
UPTO 6.40mm - ±0.20	UPTO 32.0mm - ±0.38	UPTO 120.0mm - ±0.85	1. STRAIGHTNESS=1.7mm/M 2. TWIST=1.7mm/M 3. ANGULARITY= ±2° 4. FLATNESS =0.007xWIDTH
UPTO 10.0mm - ±0.23	UPTO 50.0mm - ±0.46	UPTO 160.0mm - ±1.02	
UPTO 12.0mm - ±0.25	UPTO 60.0mm - ±0.53	UPTO 200.0mm - ±1.14	
UPTO 16.0mm - ±0.28	UPTO 80.0mm - ±0.69	UPTO 250.0mm - ±1.40	
UPTO 25.0mm - ±0.30	UPTO 100.0mm - ±0.75	UPTO 300.0mm - ±1.65	

 SYMBOL OF QUALITY AN ISO 9001 COMPANY	JINDAL ALUMINIUM LTD. BANGALORE-560073 (INDIA)	NAME	DATE
		DRAWN	PARVESH 13-02-2015
		CHECKED	
		APPROVED	S.S.GARG 20-02-2015
1. ALL DIMENSIONS ARE IN mm. 2. ROUND OFF ALL SHARP CORNERS WITH 0.40 mm. 3. TOLERANCES WILL BE AS PER IS:3965-1981, UNLESS OTHERWISE SPECIFIED		SCALE	1.5:1
		AREA mm ²	161.56
		PERIMETER mm.	254.193
		WEIGHT kg/m	0.436
		DRAWING No.	SECTION No.
PARTY'S NAME		SURFACES, BANGALORE	
PARTY'S DRAWING No.		AS PER AUTOCAD DRAWING	
ALLOY & TEMPER		HE9 WP	
DESCRIPTION		DISPLAY SECTION	
		P-14435	-
		E0283	E0283