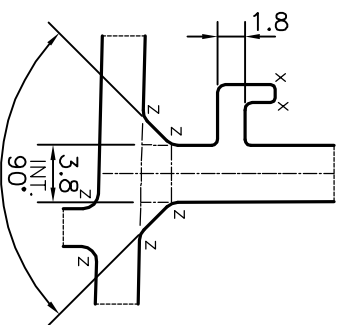
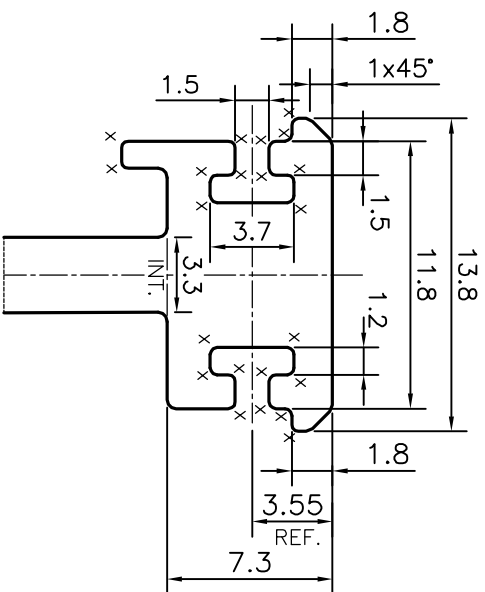


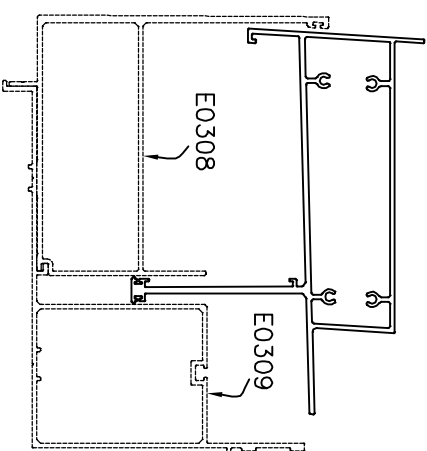
DETAIL OF "A"
SCALE 2:1



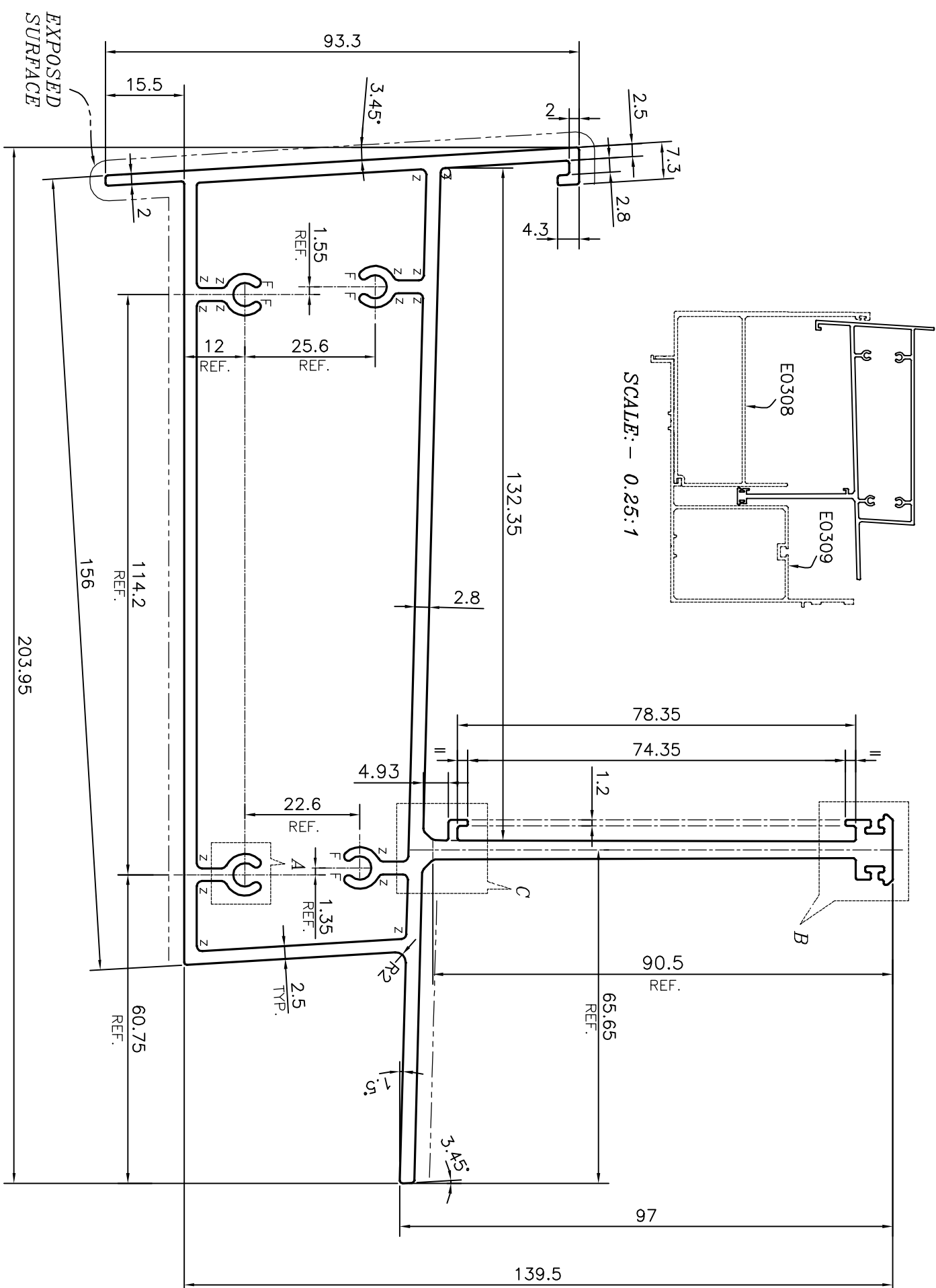
DETAIL OF "C"
SCALE 2:1



DETAIL OF "B"
SCALE 3:1



SCALE: - 0.25:1



UNSPECIFIED CORNERS RADIUS WILL BE 0.50 mm.

F = FULL RADIUS (8 PLACES)
Z = RADIUS 1 mm. (24 PLACES)
X = RADIUS 0.3 mm. (24 PLACES)

ANGULARITY TOLERANCE = ±1°
TRY TO MAINTAIN AS CLOSER ±0.75

TOLERANCES ON OVERALL WIDTHS & WIDTHS ACROSS FLATS OF BARS, & REGULAR SECTIONS		
UPTO 6.40mm - ±0.20	UPTO 32.0mm - ±0.38	UPTO 120.0mm - ±0.85
UPTO 10.0mm - ±0.23	UPTO 50.0mm - ±0.46	UPTO 160.0mm - ±1.02
UPTO 12.0mm - ±0.25	UPTO 60.0mm - ±0.53	UPTO 200.0mm - ±1.14
UPTO 16.0mm - ±0.28	UPTO 80.0mm - ±0.69	UPTO 250.0mm - ±1.40
UPTO 25.0mm - ±0.30	UPTO 100.0mm - ±0.75	UPTO 300.0mm - ±1.65

1. STRAIGHTNESS=1.7mm/M
2. TWIST=1.7mm/M
3. FLATNESS =0.003xWIDTH

<p>JINDAL ALUMINIUM LTD. BANGALORE-560073 (INDIA)</p>		<p>SYMBOL OF QUALITY AN ISO 9001 COMPANY</p>
<p>PARTY'S NAME ALUFIT (INDIA) PRIVATE LIMITED, BANGALORE</p>		<p>1. ALL DIMENSIONS ARE IN mm. 2. ROUND OFF ALL SHARP CORNERS WITH 0.40 mm. 3. TOLERANCES WILL BE AS PER IS:6477-1983, UNLESS OTHERWISE SPECIFIED</p>
<p>PARTY'S DRAWING No. AS PER AUTOCAD DRAWING-INT-14</p>		<p>DRAWN NAME PARVESH</p>
<p>ALLOY & TEMPER 6063 T6</p>		<p>DATE 30-06-2015</p>
<p>DESCRIPTION CURTAIN WALL SECTION-CHICKEN HEAD</p>		<p>CHECKED B.NATARAJA</p>
<p>SCALE 1:1</p>		<p>APPROVED 17-07-2015</p>
<p>AREA mm² 1857.395</p>		<p>PERIMETER mm. 830.139</p>
<p>WEIGHT kg/m 5.015</p>		<p>DRAWING No. P-14688-1</p>
<p>DRAWING No. E0307</p>		<p>SECTION No. -</p>