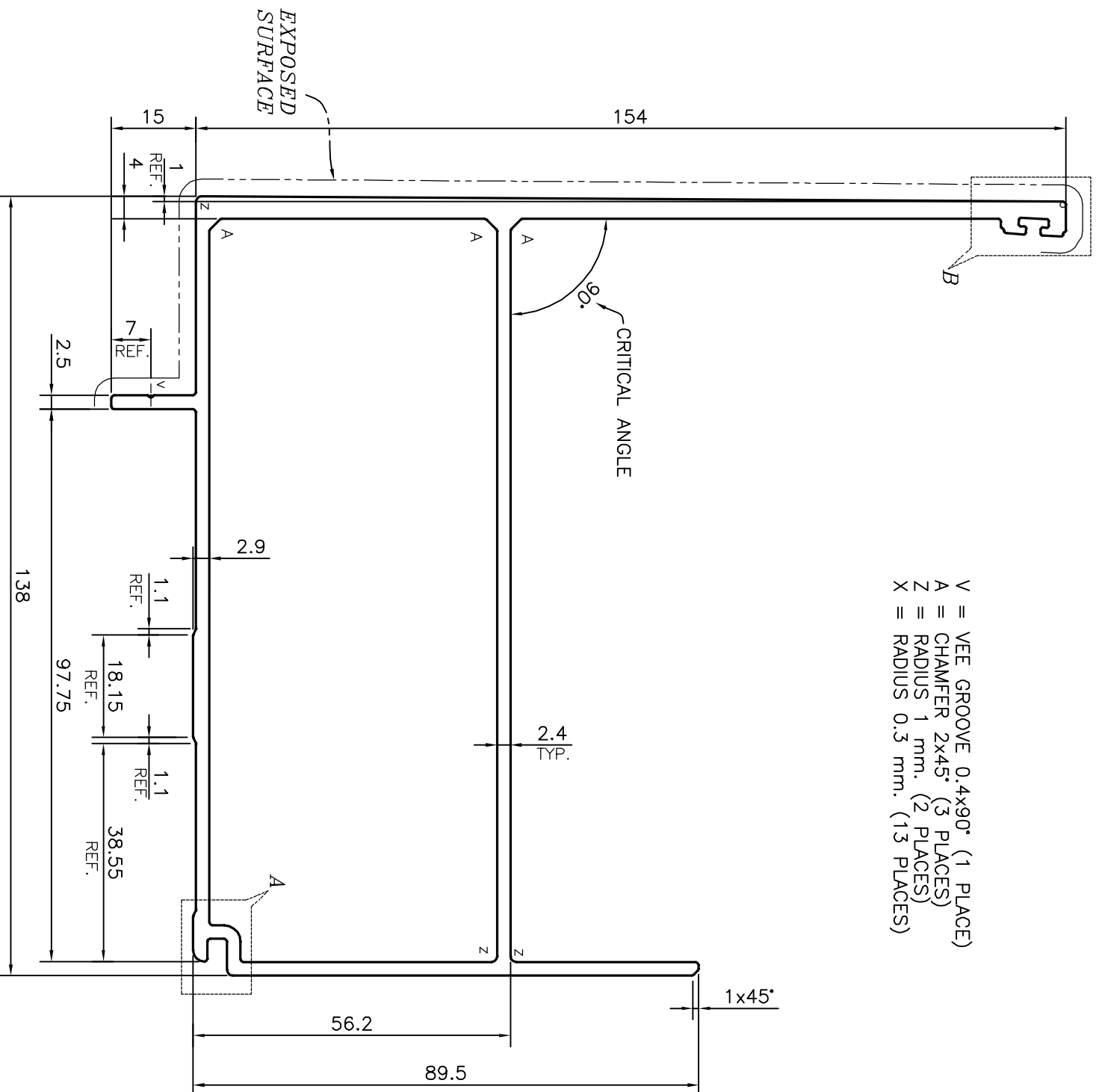
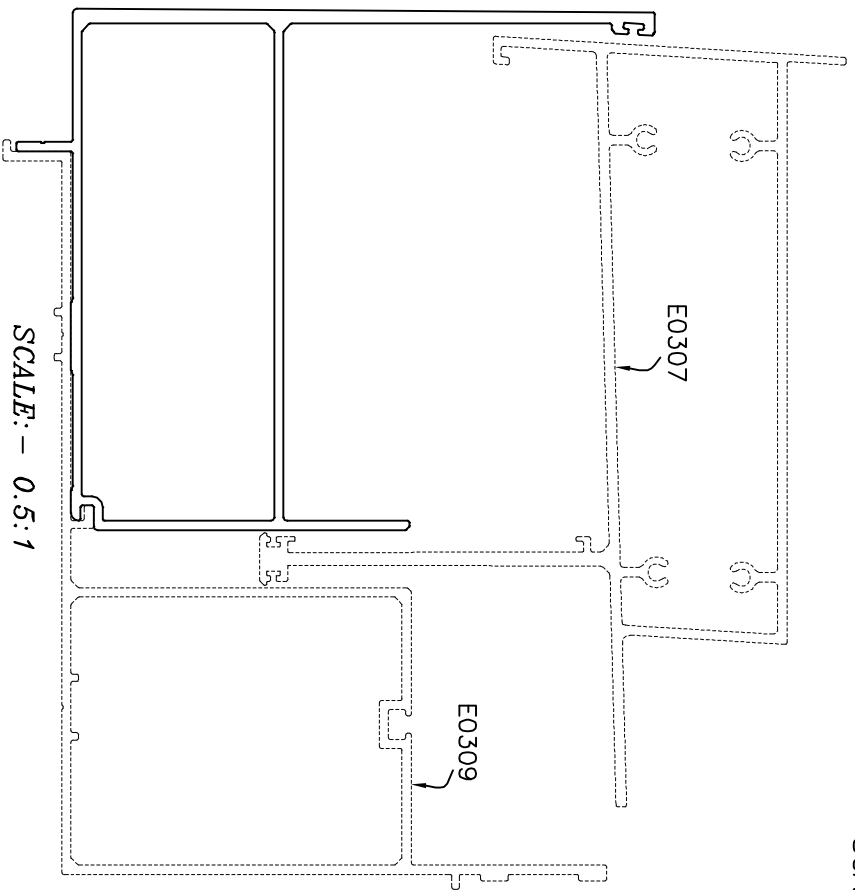
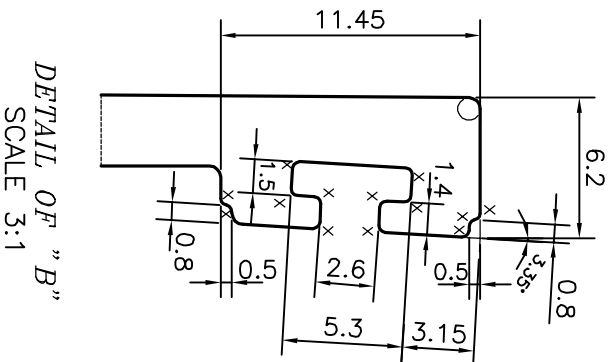
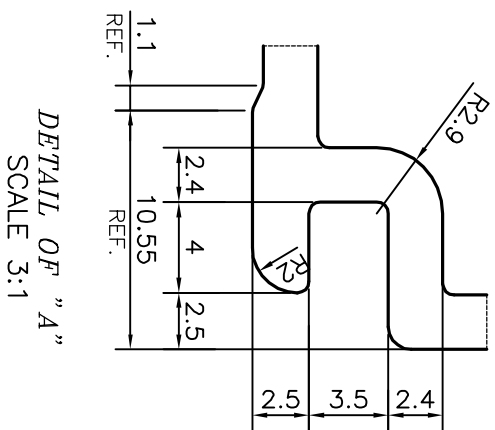


P-14689-1

E0308



V = VEE GROOVE 0.4x90° (1 PLACE)  
 A = CHAMFER 2x45° (3 PLACES)  
 Z = RADIUS 1 mm. (2 PLACES)  
 X = RADIUS 0.3 mm. (13 PLACES)

ANGULARITY TOLERANCE = ±1°  
 TRY TO MAINTAIN AS CLOSER ±0.75

TOLERANCES ON OVERALL WIDTHS & WIDTHS ACROSS FLATS OF BARS, & REGULAR SECTIONS	UPTO 6.40mm	UPTO 10.0mm	UPTO 12.0mm	UPTO 16.0mm	UPTO 25.0mm	UPTO 32.0mm	UPTO 50.0mm	UPTO 60.0mm	UPTO 80.0mm	UPTO 100.0mm	UPTO 120.0mm	UPTO 160.0mm	UPTO 200.0mm	UPTO 250.0mm	UPTO 300.0mm
	±0.20	±0.23	±0.25	±0.28	±0.30	±0.38	±0.46	±0.53	±0.69	±0.75	±0.85	±1.02	±1.14	±1.40	±1.65

<p>SYMBOL OF QUALITY AN ISO 9001 COMPANY</p>		<p><b>JINDAL ALUMINIUM LTD.</b> BANGALORE-560073 (INDIA)</p>		<p>DRAWN NAME: PARVESH DATE: 30-06-2015</p>
<p>1. ALL DIMENSIONS ARE IN mm.                  2. ROUND OFF ALL SHARP CORNERS WITH 0.40 mm.                  3. TOLERANCES WILL BE AS PER IS:6477-1983, UNLESS OTHERWISE SPECIFIED</p>		<p>SCALE: 1:1</p>		<p>CHECKED</p>
<p>PARTY'S NAME: ALUFIT (INDIA) PRIVATE LIMITED, BANGALORE</p>		<p>AREA mm<sup>2</sup>: 1466.977</p>		<p>APPROVED B.NATARAJA 17-07-2015</p>
<p>PARTY'S DRAWING No.: AS PER AUTOCAD DRAWING-INT-12</p>		<p>PERIMETER mm.: 697.663</p>		<p>SCALE</p>
<p>ALLOY &amp; TEMPER: 6063 T6</p>		<p>WEIGHT kg/m: 3.961</p>		<p>DRAWING No. SECTION No.</p>
<p>DESCRIPTION: CURTAIN WALL SECTION-RECEPTOR-2</p>		<p>DRAWING No.: P-14689-1</p>		<p>SECTION No.: E0308</p>

UNSPECIFIED CORNERS RADIUS WILL BE 0.50 mm.