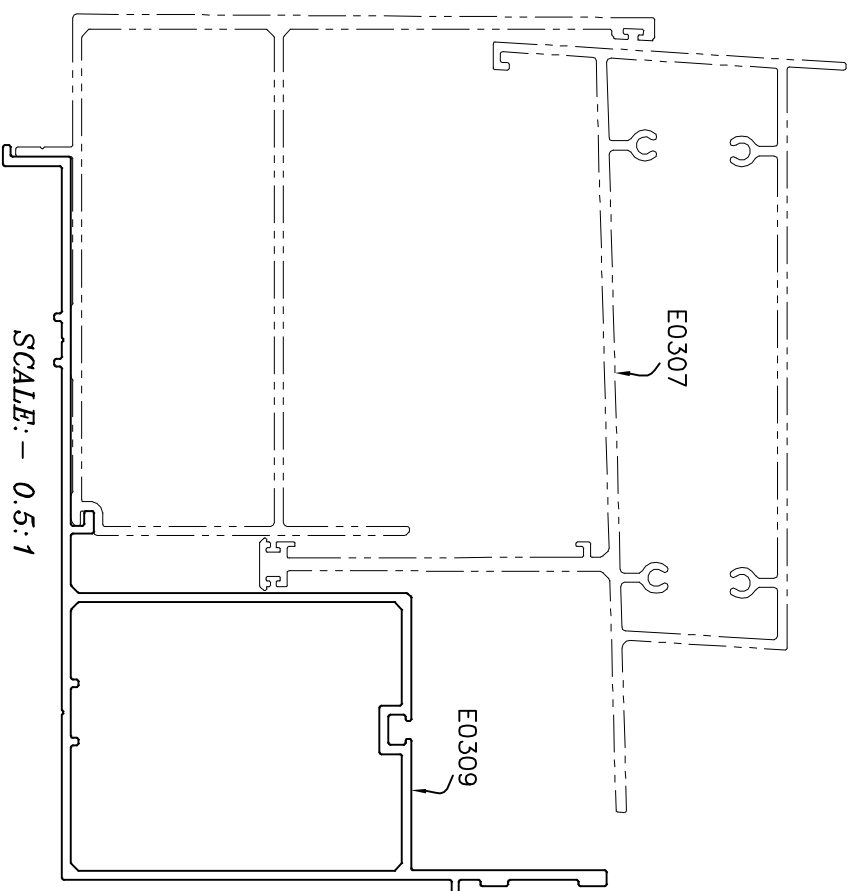
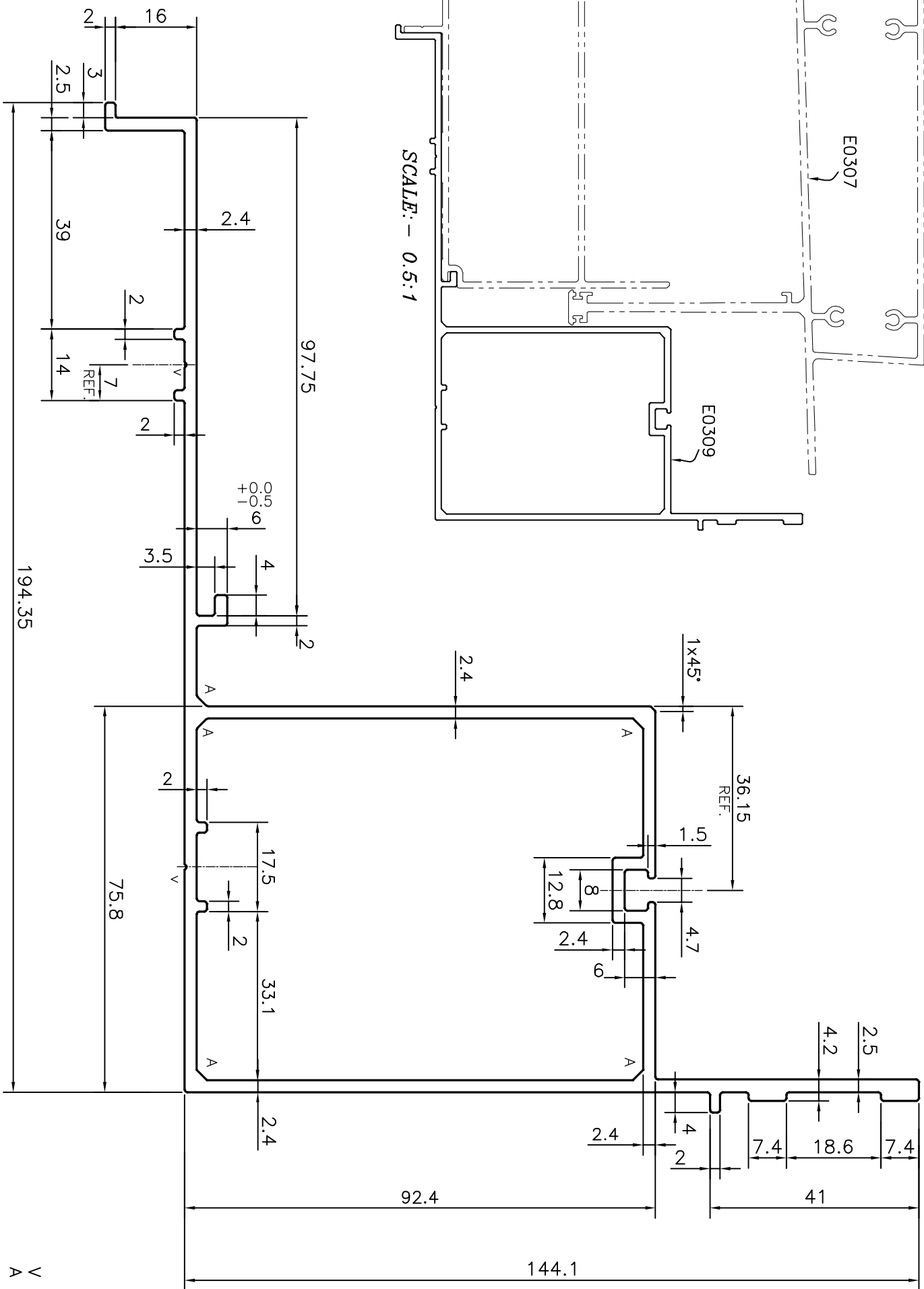


P-14690-1

E0309



SCALE: - 0.5:1



V = VEE GROOVE 0.4x90° (2 PLACES)
A = CHAMFER 2x45° (5 PLACES)


UNSPECIFIED CORNERS RADIUS WILL BE 0.50 mm.

TOLERANCES ON OVERALL WIDTHS & WIDTHS ACROSS FLATS OF BARS, & REGULAR SECTIONS	UPTO 6.40mm	UPTO 10.0mm	UPTO 12.0mm	UPTO 16.0mm	UPTO 25.0mm
	±0.20	±0.23	±0.25	±0.28	±0.30

TOLERANCES ON OVERALL WIDTHS & WIDTHS ACROSS FLATS OF BARS, & REGULAR SECTIONS	UPTO 32.0mm	UPTO 50.0mm	UPTO 60.0mm	UPTO 80.0mm	UPTO 100.0mm
	±0.38	±0.46	±0.53	±0.69	±0.75

TOLERANCES ON OVERALL WIDTHS & WIDTHS ACROSS FLATS OF BARS, & REGULAR SECTIONS	UPTO 120.0mm	UPTO 160.0mm	UPTO 200.0mm	UPTO 250.0mm	UPTO 300.0mm
	±0.85	±1.02	±1.14	±1.40	±1.65

ANGULARITY TOLERANCE = ±1°
TRY TO MAINTAIN AS CLOSER ±0.75

 <p>SYMBOL OF QUALITY AN ISO 9001 COMPANY</p>		<p>JINDAL ALUMINIUM LTD. BANGALORE-560073 (INDIA)</p>	
<p>1. ALL DIMENSIONS ARE IN mm. 2. ROUND OFF ALL SHARP CORNERS WITH 0.40 mm. 3. TOLERANCES WILL BE AS PER IS:6477-1983, UNLESS OTHERWISE SPECIFIED</p>			
PARTY'S NAME	ALUFIT (INDIA) PRIVATE LIMITED, BANGALORE		
PARTY'S DRAWING No.	AS PER AUTOCAD DRAWING-INT-13		
ALLOY & TEMPER	6063 T6		
DESCRIPTION	CURTAIN WALL SECTION-RECEPTOR-1		
DRAWN	NAME: PAREESH	DATE	30-06-2015
CHECKED			
APPROVED	B.NATARAJA		17-07-2015
SCALE			1:1
AREA	mm ²		1349.525
PERIMETER	mm.		759.237
WEIGHT	kg/m		3.644
DRAWING No.		SECTION No.	
P-14690-1			
E0309		E0309	