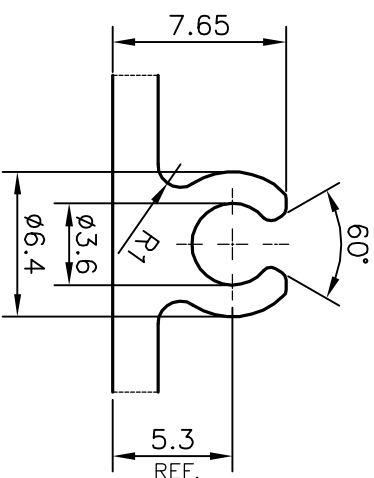
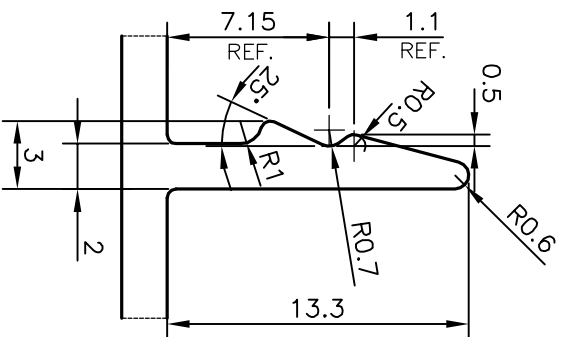
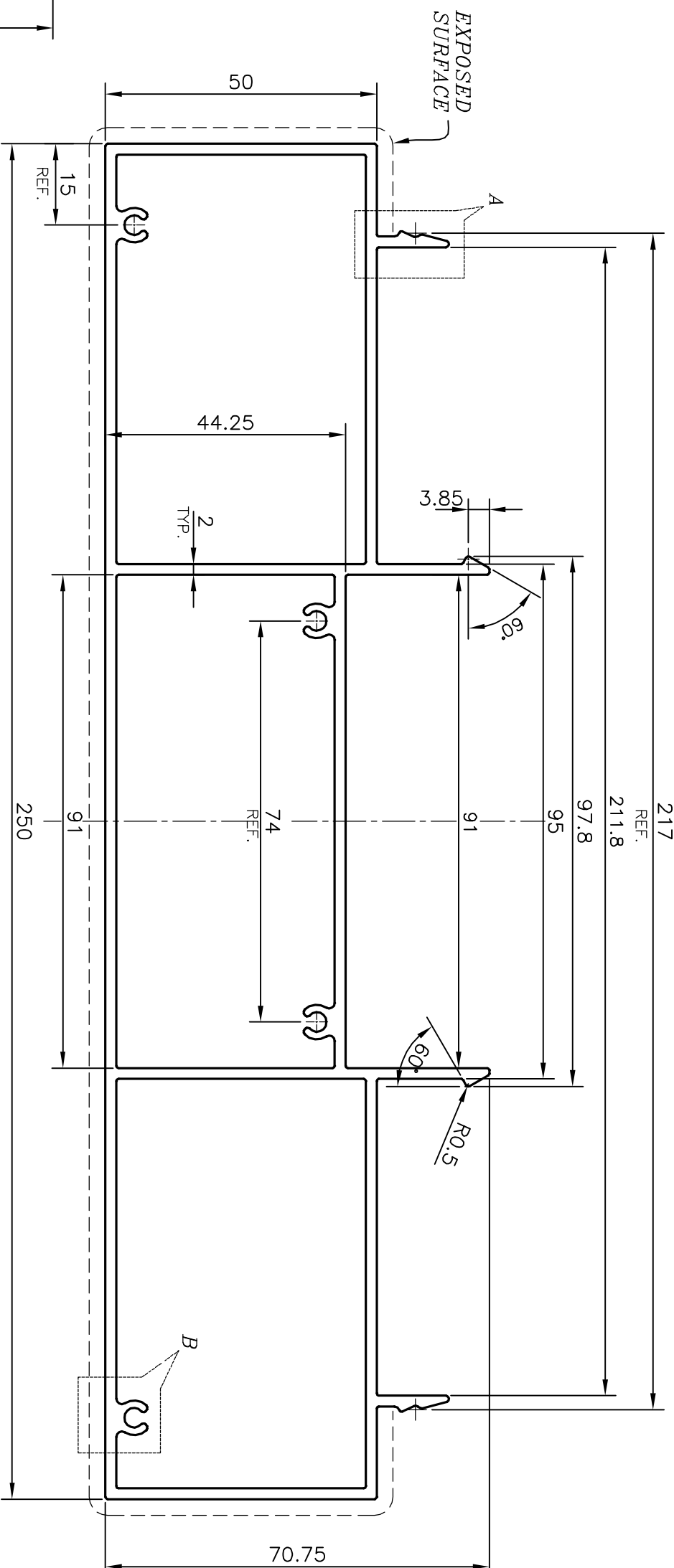


P-14731-1

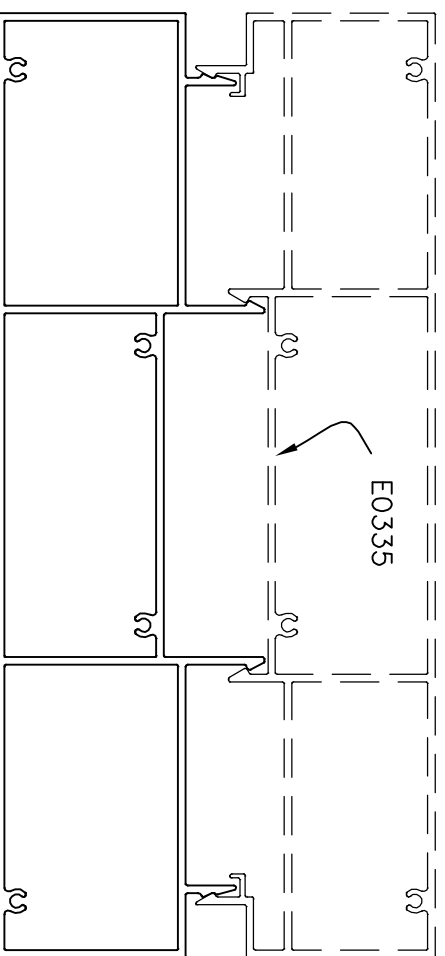
E0334



ANGULARITY TOLERANCE = ±1°
TRY TO MAINTAIN AS CLOSER ±0.75

DETAIL OF "A"
SCALE 3:1

DETAIL OF "B"
SCALE 3:1



TOLERANCES ON OVERALL WIDTHS & WIDTHS ACROSS FLATS OF BARS, & REGULAR SECTIONS

UPTO 6.40mm - ±0.20	UPTO 32.0mm - ±0.38	UPTO 120.0mm - ±0.85
UPTO 10.0mm - ±0.23	UPTO 50.0mm - ±0.46	UPTO 160.0mm - ±1.02
UPTO 12.0mm - ±0.25	UPTO 60.0mm - ±0.53	UPTO 200.0mm - ±1.14
UPTO 16.0mm - ±0.28	UPTO 80.0mm - ±0.69	UPTO 250.0mm - ±1.40
UPTO 25.0mm - ±0.30	UPTO 100.0mm - ±0.75	UPTO 300.0mm - ±1.65



JINDAL ALUMINIUM LTD.
BANGALORE-560073 (INDIA)

SYMBOL OF QUALITY
AN ISO 9001 COMPANY

1. ALL DIMENSIONS ARE IN mm.
2. ROUND OFF ALL SHARP CORNERS WITH 0.40 mm.
3. TOLERANCES WILL BE AS PER IS:6477-1983 , UNLESS OTHERWISE SPECIFIED

PARTY'S NAME	ALUFIT (INDIA) PRIVATE LIMITED, BANGALORE	DRAWN	NAME	DATE
PARTY'S DRAWING No.	AS PER AUTOCAD DRAWING-INT-22	CHECKED	PARVESH	30-06-2015
ALLOY & TEMPER	6063 T6	APPROVED	B.NATARAJA	17-07-2015
DESCRIPTION	CURTAIN WALL SECTION-HORIZONTAL FIN	SCALE	1:1	
		AREA mm ²	1610.826	
		PERIMETER mm.	741.921	
		WEIGHT kg/m	4.349	
		DRAWING No.	P-14731-1	SECTION No.
			E0334	E0334