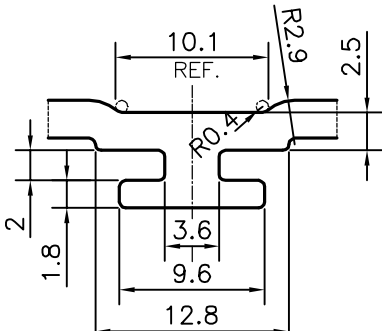


P-14948

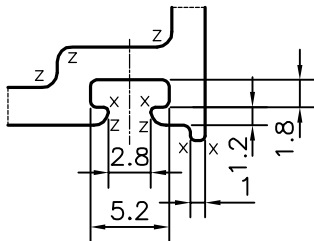
E0353

EXPOSED SURFACE

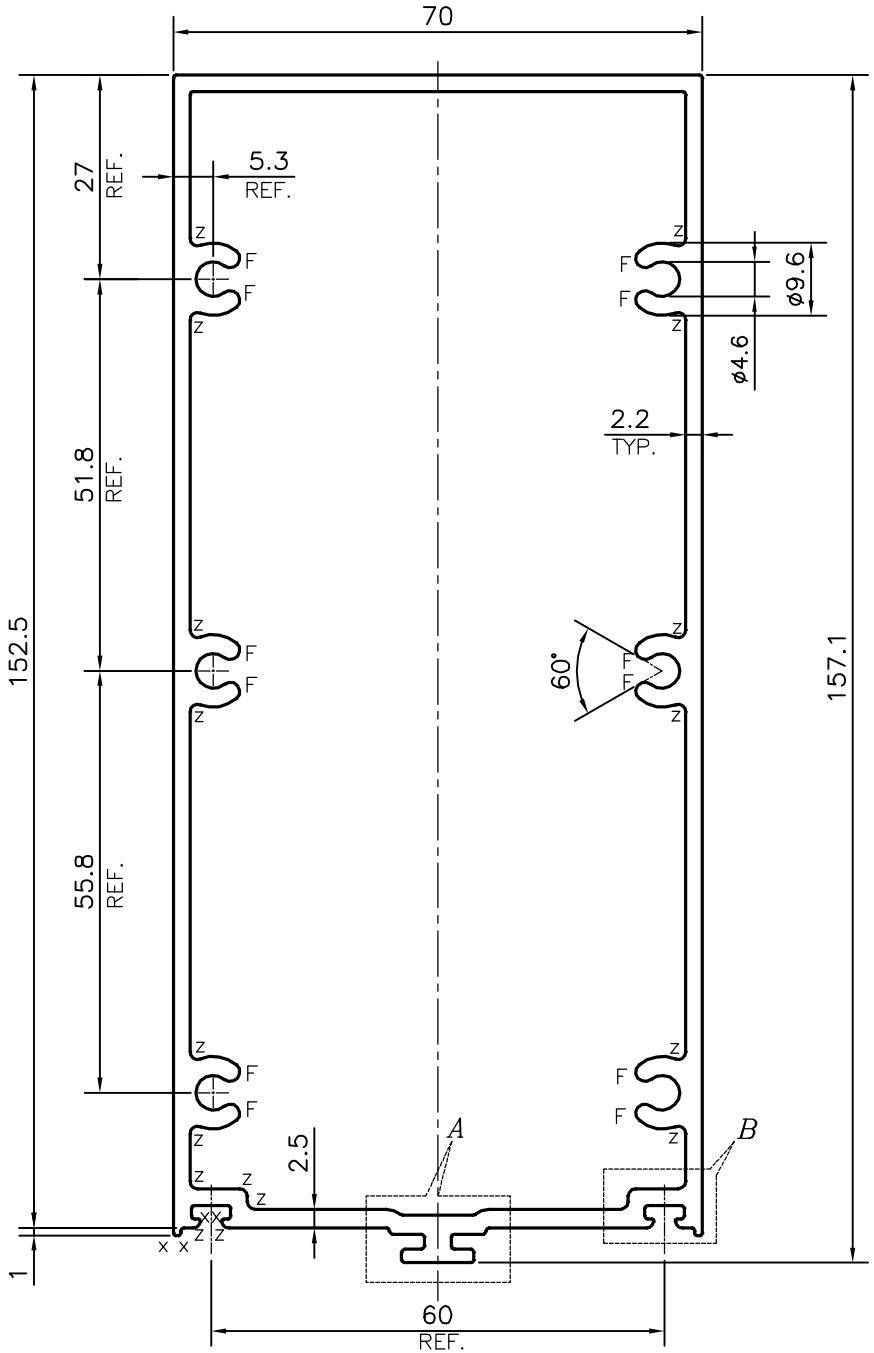
E0341



DETAIL OF "A"
SCALE 2:1



DETAIL OF "B"
SCALE 2:1



F = FULL RADIUS (12 PLACES)
X = RADIUS 0.3 mm. (4 PLACES)
Z = RADIUS 1 mm. (22 PLACES)

TOLERANCES ON OVERALL WIDTHS & WIDTHS ACROSS FLATS OF BARS, & REGULAR SECTIONS

UPTO 6.40mm - ±0.20	UPTO 32.0mm - ±0.38	UPTO 120.0mm - ±0.85	1. STRAIGHTNESS=1.7mm/M 2. TWIST=1.7mm/M 3. ANGULARITY= ±2° 4. FLATNESS =0.007xWIDTH
UPTO 10.0mm - ±0.23	UPTO 50.0mm - ±0.46	UPTO 160.0mm - ±1.02	
UPTO 12.0mm - ±0.25	UPTO 60.0mm - ±0.53	UPTO 200.0mm - ±1.14	
UPTO 16.0mm - ±0.28	UPTO 80.0mm - ±0.69	UPTO 250.0mm - ±1.40	
UPTO 25.0mm - ±0.30	UPTO 100.0mm - ±0.75	UPTO 300.0mm - ±1.65	



SYMBOL OF QUALITY
AN ISO 9001 COMPANY

JINDAL ALUMINIUM LTD.
BANGALORE-560073 (INDIA)

	NAME	DATE
DRAWN	PARVESH	10-08-2015
CHECKED		
APPROVED	S.S.GARG	12-08-2015
SCALE		1:1
AREA mm ²		1248.113
PERIMETER mm.		484.96
WEIGHT kg/m		3.37
DRAWING No.	SECTION No.	
P-14948	-	
E0353	E0353	

1. ALL DIMENSIONS ARE IN mm.
2. ROUND OFF ALL SHARP CORNERS WITH 0.40 mm.
3. TOLERANCES WILL BE AS PER IS:6477-1983 , UNLESS OTHERWISE SPECIFIED

PARTY'S NAME	ALUFIT (INDIA) PRIVATE LIMITED, BANGALORE
PARTY'S DRAWING No.	AS PER AUTOCAD DRAWING-AL-10
ALLOY & TEMPER	6063 T6
DESCRIPTION	CURTAIN WALL SECTION