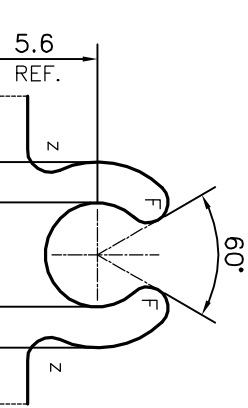
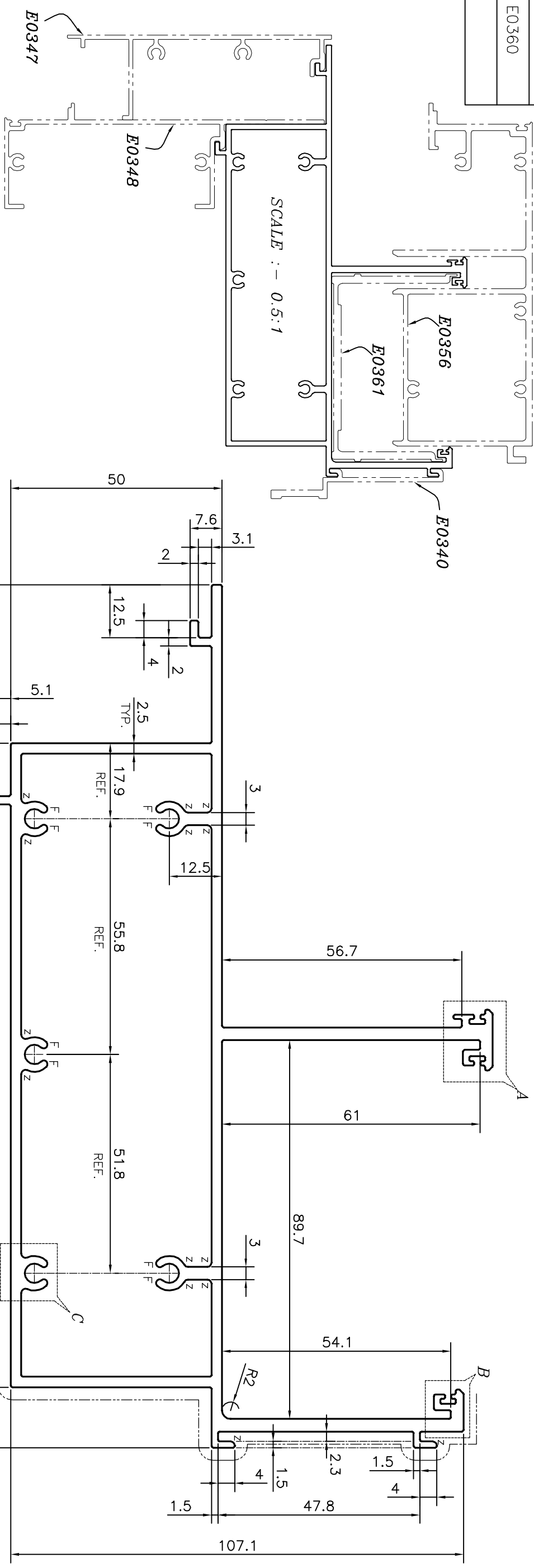
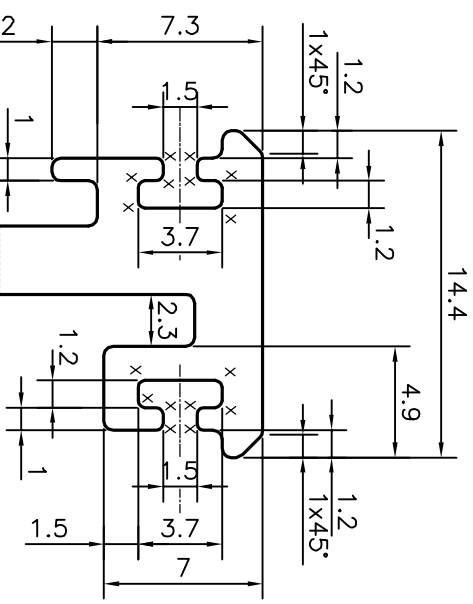


P-14955-1

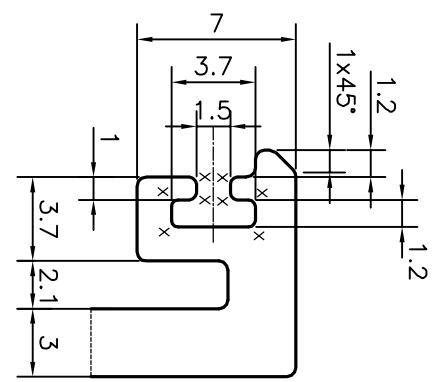
E0360



DETAIL OF "C"  
SCALE 3:1



DETAIL OF "A"  
SCALE 3:1



DETAIL OF "B"  
SCALE 3:1

Z = RADIUS 1 mm. (14 PLACES)  
X = RADIUS 0.3 mm. (24 PLACES)  
F = FULL RADIUS (10 PLACES)

TOLERANCES ON OVERALL WIDTHS & WIDTHS ACROSS FLATS OF BARS, & REGULAR SECTIONS

UPTO 6.40mm - ±0.20	UPTO 32.0mm - ±0.38	UPTO 120.0mm - ±0.85
UPTO 10.0mm - ±0.23	UPTO 50.0mm - ±0.46	UPTO 160.0mm - ±1.02
UPTO 12.0mm - ±0.25	UPTO 60.0mm - ±0.53	UPTO 200.0mm - ±1.14
UPTO 16.0mm - ±0.28	UPTO 80.0mm - ±0.69	UPTO 250.0mm - ±1.40
UPTO 25.0mm - ±0.30	UPTO 100.0mm - ±0.75	UPTO 300.0mm - ±1.65

**JINDAL**  
SYMBOL OF QUALITY  
AN ISO 9001 COMPANY  
**JINDAL ALUMINIUM LTD.**  
BANGALORE-560073 (INDIA)

1. ALL DIMENSIONS ARE IN mm.
2. ROUND OFF ALL SHARP CORNERS WITH 0.40 mm.
3. TOLERANCES WILL BE AS PER IS:6477-1983 , UNLESS OTHERWISE SPECIFIED

PARTY'S NAME	ALUFIT (INDIA) PRIVATE LIMITED, BANGALORE	DRAWN	NAME	DATE
PARTY'S DRAWING No.	AS PER AUTOCAD DRAWING-AL-06	CHECKED	PARVESH	05-08-2015
ALLOY & TEMPER	6063 T6	APPROVED	S.S.GARG	12-08-2015
DESCRIPTION	CURTAIN WALL SECTION-SPANDREL ADAPTER	SCALE	1:1	
		AREA mm <sup>2</sup>	1784.743	
		PERIMETER mm.	879.092	
		WEIGHT kg/m	4.819	
		DRAWING No.	P-14955-1	
		SECTION No.	E0360	