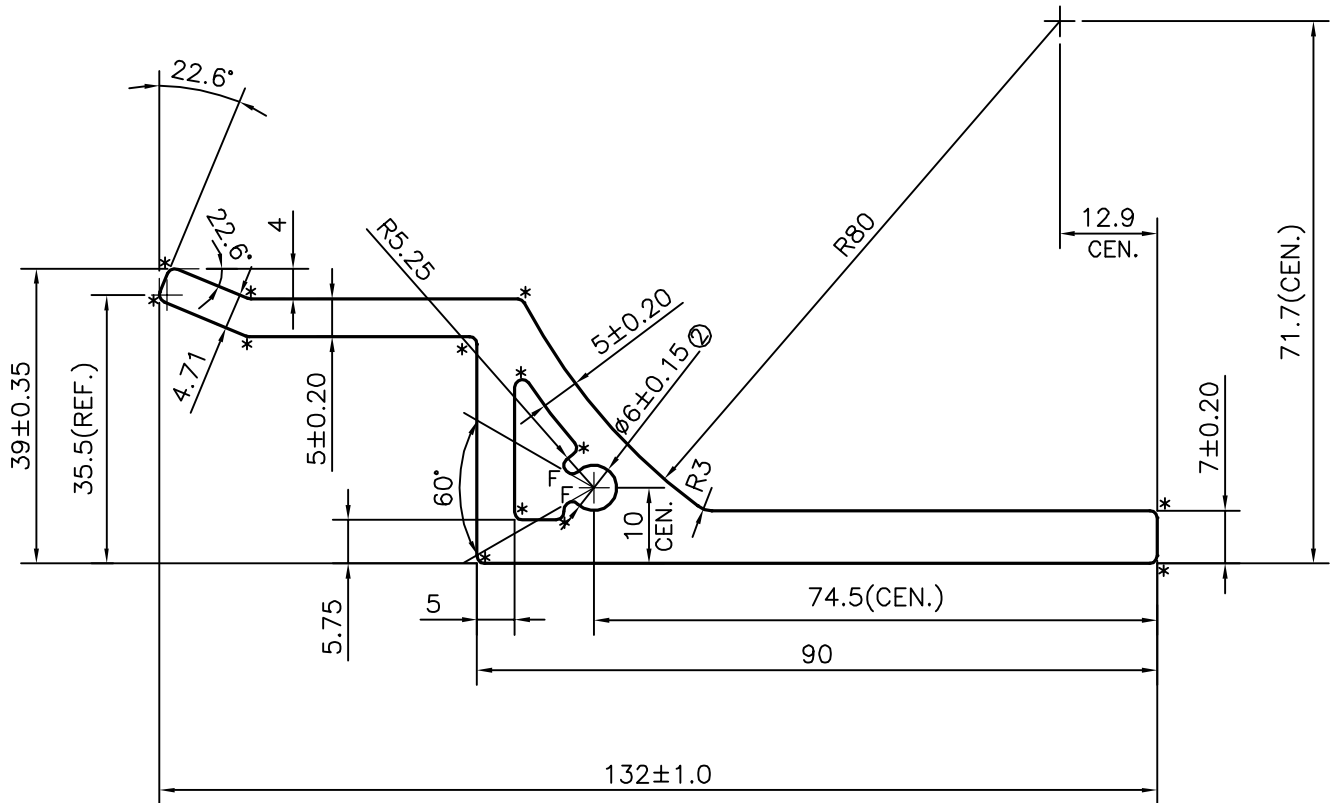


P-15518

E0429

**ISSUE-2**

SCREW BOX DIA CHANGED FROM  $\phi 6.5$  mm TO  $\phi 6.0$  mm & TOLERANCE ADDED  $\pm 0.15$   
 WEIGHT ALSO CHANGED FROM 3.091 kg/m TO 3.101 kg/m

F = FULL RADIUS (2 PLACES)

\* = 1.0 RADIUS (13 PLACES)



SYMBOL OF QUALITY  
AN ISO 9001 COMPANY

**JINDAL ALUMINIUM LTD.**  
BANGALORE-560073 (INDIA)

	NAME	DATE
DRAWN	J.P.KAUSHIK	02-04-2016
CHECKED		
APPROVED		

- ALL DIMENSIONS ARE IN mm.
- ROUND OFF ALL SHARP CORNERS WITH 0.40 mm.
- TOLERANCES WILL BE AS PER, IS:6477-1983 UNLESS OTHERWISE SPECIFIED

SCALE	1:1
AREA mm <sup>2</sup>	1148.655
PERIMETER mm.	316.793
WEIGHT kg/m	3.101

PARTY'S NAME AGUERRI INDUSTRIES PVT. LTD., CHENNAI

DRAWING No.	SECTION No.
P-15518	-
E0429	E0429(ISSUE-2)

PARTY'S DRAWING No. 06450

ALLOY & TEMPER 6063 T5

DESCRIPTION MATRIZ GANCHO INFERIOR/BOTTOM HOOK