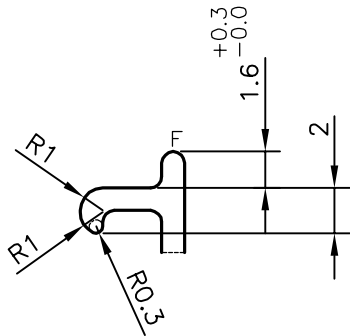
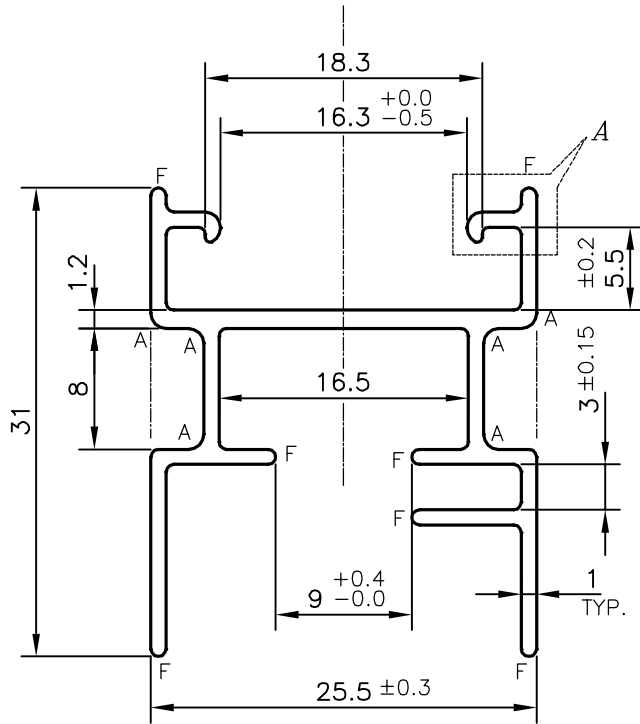
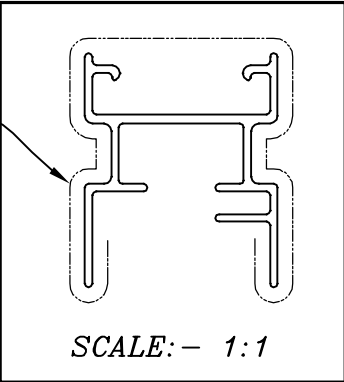


P-13106
X1704
21674
E0495



DETAIL OF "A"
SCALE 3:1

SECTION SHOULD MATCH
WITH PLASTIC COMPONENT

F = FULL RADIUS (7 PLACES)
A = RADIUS 1 mm. (6 PLACES)

1. STRAIGHTNESS=1.7mm/M
2. TWIST=1.7mm/M
3. ANGULARITY= ±2°
4. FLATNESS =0.007xWIDTH

TOLERANCE CHART CD = CIRCUMSCRIBING CIRCLE

DIMENSION	CD ≤ 100	100 < CD < 200	200 < CD < 300	300 < CD < 500
UPTO 10mm	±0.25	±0.30	±0.35	±0.40
10.0 - 25.0	±0.30	±0.40	±0.50	±0.60
25.0 - 50.0	±0.50	±0.60	±0.80	±0.90
50.0 - 100	±0.70	±0.90	±1.10	±1.30
100 - 150	-	±1.10	±1.30	±1.50
150 - 200	-	±1.3	±1.50	±1.80
200 - 300	-	-	±1.70	±2.10
300 - 450	-	-	-	±2.80



SYMBOL OF QUALITY
AN ISO 9001 COMPANY

JINDAL ALUMINIUM LTD.
BANGALORE-560073 (INDIA)

NAME		DATE
DRAWN	PARVESH	18-10-2013
CHECKED		
APPROVED	S.S.GARG	07-11-2013
SCALE		2:1
AREA mm ²		120.784
PERIMETER mm.		223.198
WEIGHT kg/m		0.326
DRAWING No.	SECTION No.	
P-13106	-	
X1704	X1704	
21674	21674	
E0495	E0495	

1. ALL DIMENSIONS ARE IN mm.
2. ROUND OFF ALL SHARP CORNERS WITH 0.50 mm.
3. TOLERANCES WILL BE AS PER BS:EN-755-9, UNLESS OTHERWISE SPECIFIED

PARTY'S NAME	AWESOME DESIGNS, NEW DELHI
PARTY'S DRAWING No.	0002
ALLOY & TEMPER	HE9 WP
DESCRIPTION	WINDOW SECTION-B FIX RAIL