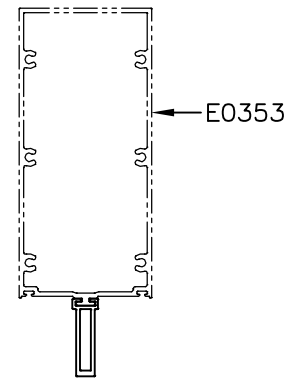
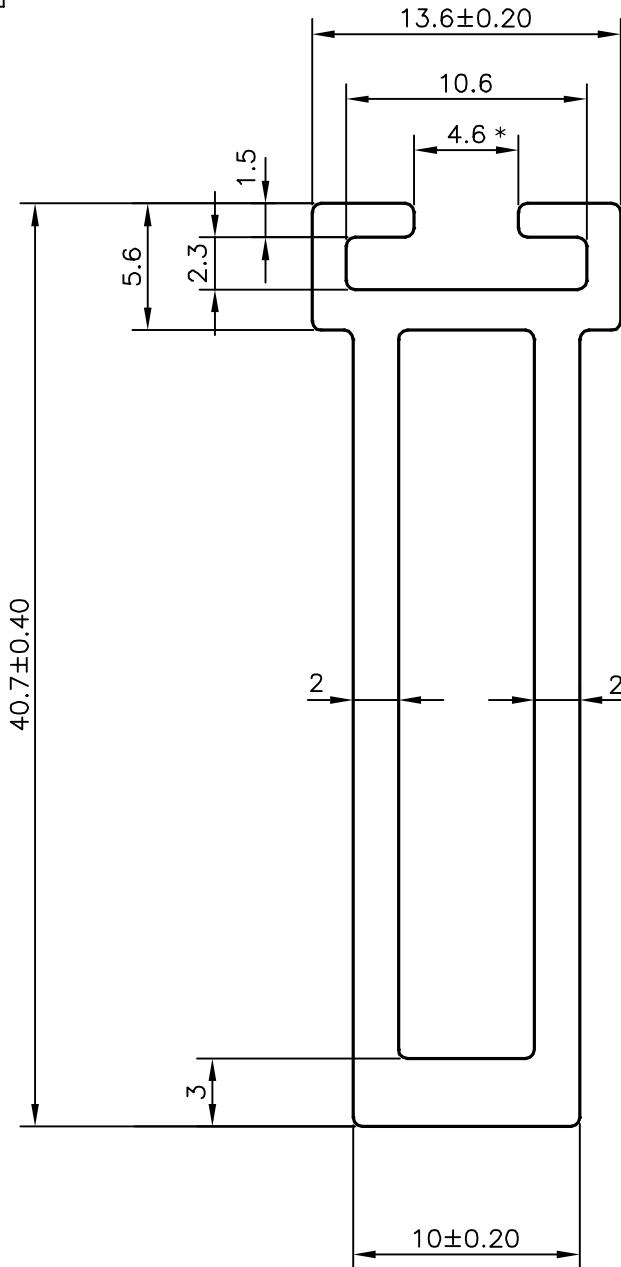
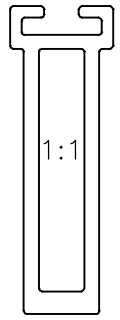


P-16216-1

E0530



- 1. STRAIGHTNESS=1.0mm/M
- 2. TWIST=1.0mm/M
- 3. ANGULARITY= ±1°
- 4. FLATNESS =0.006xWIDTH

* = MARKED CRITICAL DIMENSION



SYMBOL OF QUALITY
AN ISO 9001 COMPANY

JINDAL ALUMINIUM LTD.
BANGALORE-560073 (INDIA)

	NAME	DATE
DRAWN	J.P.KAUSHIK	19-08-2016
CHECKED		
APPROVED	S.S. GARG	17-09-2016
SCALE		3:1
AREA mm ²		203.28
PERIMETER mm.		125.453
WEIGHT kg/m		0.549
DRAWING No.	SECTION No.	
P-16216-1	-	
E0530	E0530	

- 1. ALL DIMENSIONS ARE IN mm.
- 2. ROUND OFF ALL SHARP CORNERS WITH 0.40 mm.
- 3. TOLERANCES WILL BE AS PER IS:6477-1983 , UNLESS OTHERWISE SPECIFIED

PARTY'S NAME	ALUFIT (INDIA) PRIVATE LIMITED, BANGALORE
PARTY'S DRAWING No.	AL-12
ALLOY & TEMPER	6063 T6
DESCRIPTION	CURTAIN WALL SECTION