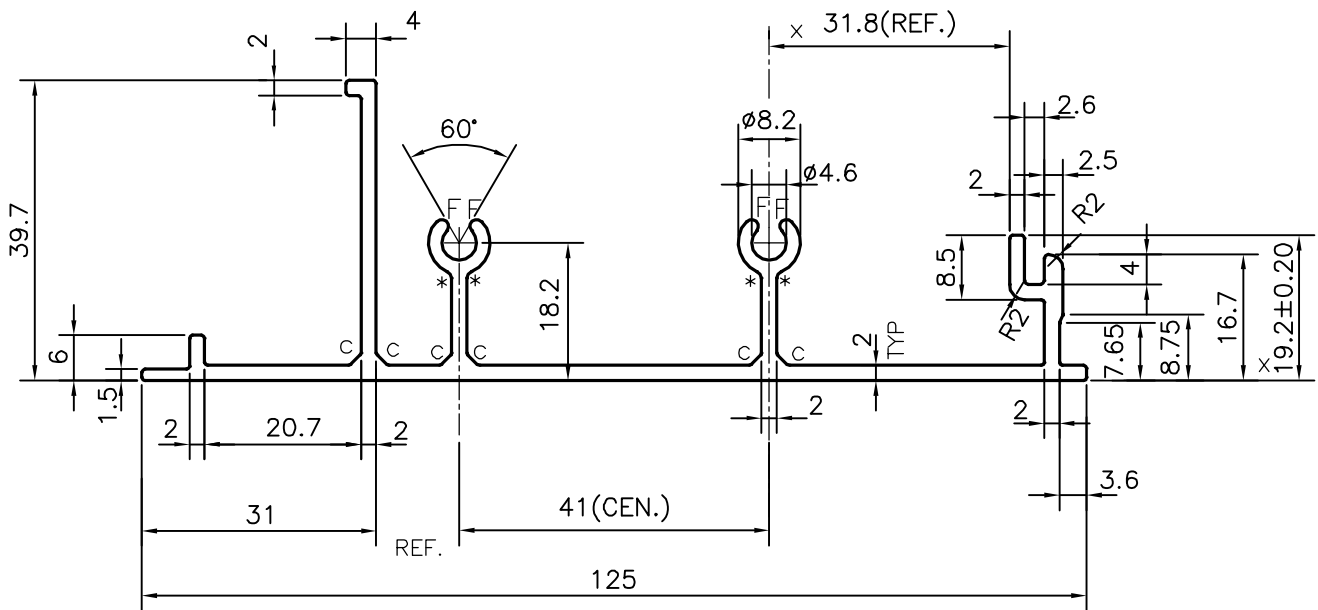
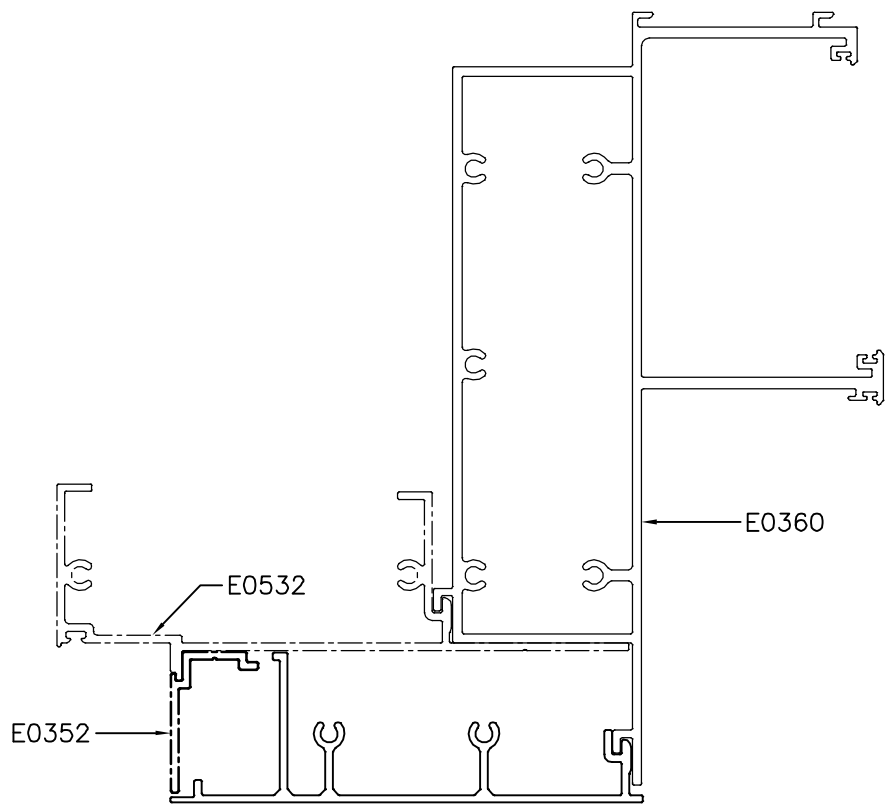


P-16220-1

E0534



1. STRAIGHTNESS=1.0mm/M
2. TWIST=1.0mm/M
3. ANGULARITY= $\pm 1^\circ$
4. FLATNESS =0.006xWIDTH

- c = CHAMFER 1.5x45°(6 PLACES)
 x = MARKED CRITICAL DIMENSION
 * = 1.0 RADIUS (4 PLACES)
 F = FULL RADIUS (4 PLACES)



SYMBOL OF QUALITY
AN ISO 9001 COMPANY

JINDAL ALUMINIUM LTD.
BANGALORE-560073 (INDIA)

	NAME	DATE
DRAWN	J.P.KAUSHIK	19-08-2016
CHECKED		
APPROVED	S.S. GARG	17-09-2016

1. ALL DIMENSIONS ARE IN mm.
2. ROUND OFF ALL SHARP CORNERS WITH 0.40 mm.
3. TOLERANCES WILL BE AS PER IS:3965-1981 , UNLESS OTHERWISE SPECIFIED

SCALE	1:1
AREA mm ²	502.813
PERIMETER mm.	493.974
WEIGHT kg/m	1.358

PARTY'S NAME	ALUFIT (INDIA) PRIVATE LIMITED, BANGALORE
PARTY'S DRAWING No.	AL-08
ALLOY & TEMPER	6063 T6
DESCRIPTION	CURTAIN WALL SECTION

DRAWING No.	SECTION No.
P-16220-1	-
E0534	E0534