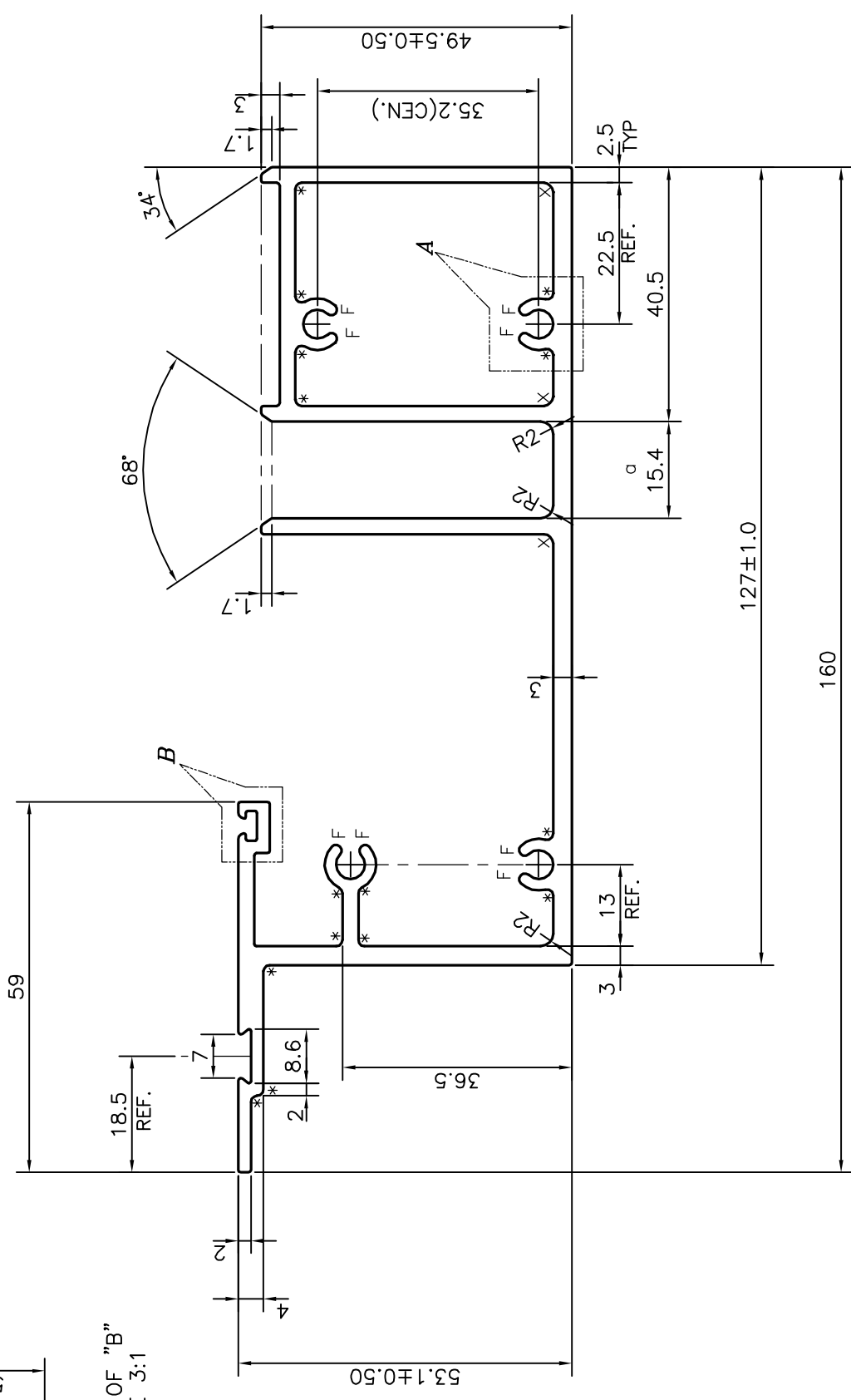
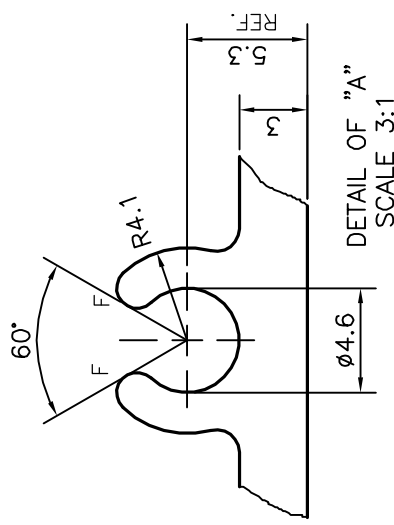
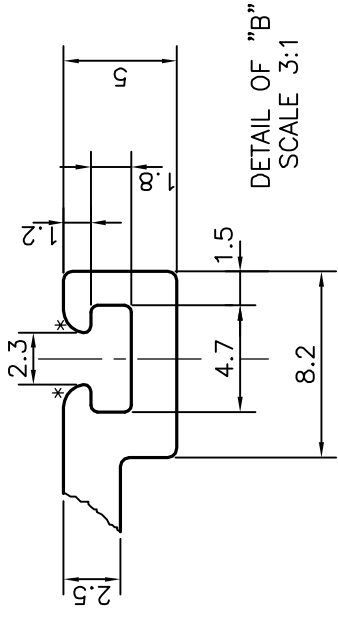


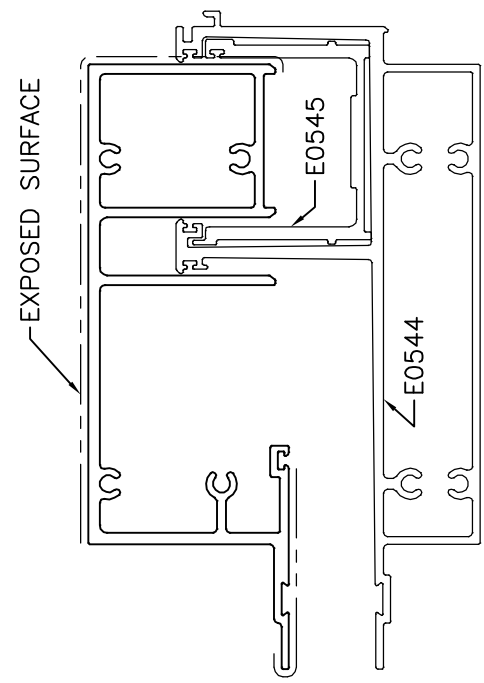
P-16536-1

E0546



- 1. STRAIGHTNESS=1.0mm/M
- 2. TWIST=1.0mm/M
- 3. ANGULARITY= ±1°
- 4. FLATNESS =0.007xWIDTH

- F = FULL RADIUS (8 PLACES)
- * = RADIUS 1.0 (17 PLACES)
- x = RADIUS 1.5 (3 PLACES)



TOLERANCES ON OVERALL WIDTHS & WIDTHS ACROSS FLATS OF BARS, & REGULAR SECTIONS

UPTO 6.40mm - ±0.20	UPTO 32.0mm - ±0.38	UPTO 120.0mm - ±0.85	UPTO 320.00mm - ±1.70
UPTO 10.0mm - ±0.23	UPTO 50.0mm - ±0.46	UPTO 160.0mm - ±1.02	
UPTO 12.0mm - ±0.25	UPTO 60.0mm - ±0.53	UPTO 200.0mm - ±1.14	
UPTO 16.0mm - ±0.28	UPTO 80.0mm - ±0.69	UPTO 250.0mm - ±1.40	
UPTO 25.0mm - ±0.30	UPTO 100.0mm - ±0.75	UPTO 300.0mm - ±1.65	

JINDAL
 SYMBOL OF QUALITY
 AN ISO 9001 COMPANY

JINDAL ALUMINIUM LTD.
 BANGALORE-560073 (INDIA)

- 1. ALL DIMENSIONS ARE IN mm.
- 2. ROUND OFF ALL SHARP CORNERS WITH 0.40 mm.
- 3. TOLERANCES WILL BE AS PER IS:6477-1983 UNLESS OTHERWISE SPECIFIED

PARTY'S NAME	ALUFIT (INDIA) PVT. LTD., BANGALORE	WEIGHT kg/m	3.387
PARTY'S DRAWING No.	AL-OR-04 & AutoCAD DRAWING	DRAWING No.	P-16536-1
ALLOY & TEMPER	6063 T6	SECTION No.	E0546
DESCRIPTION	CILL TRANSOM SECTION		

DRAWN	J.P.KAUSHIK	29-11-2016
CHECKED		
APPROVED	B.NATARAJ	03-12-2016
SCALE		1:1
AREA	mm ²	1254.371
PERIMETER	mm.	740.401

NAME	DATE
J.P.KAUSHIK	29-11-2016