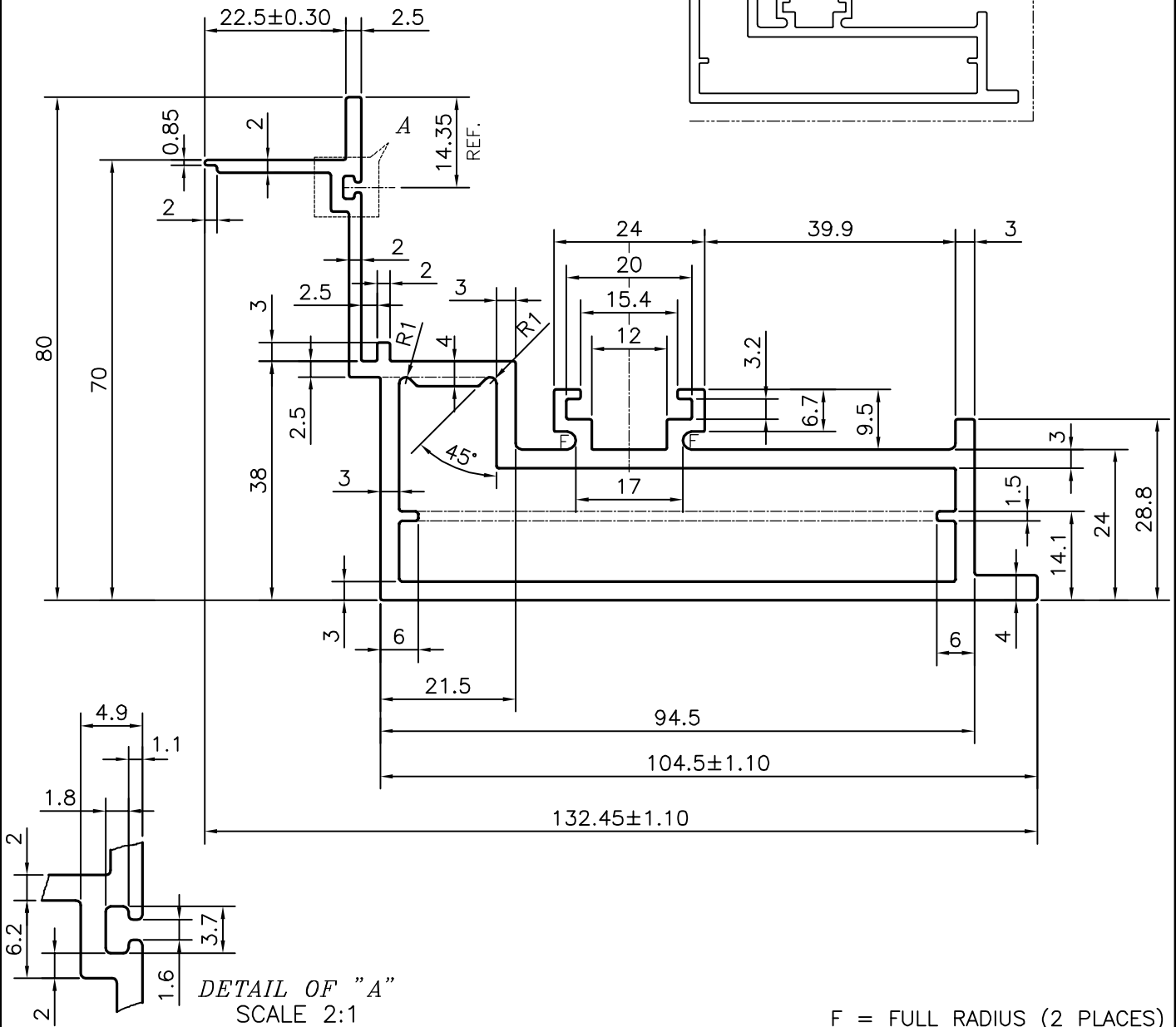


P-16593

E0571


E0570

EXPOSED SURFACE



TOLERANCES ON OVERALL WIDTHS & WIDTHS ACROSS FLATS OF BARS, & REGULAR SECTIONS

UPTO 6.40mm - ±0.20	UPTO 32.0mm - ±0.38	UPTO 120.0mm - ±0.85	1. STRAIGHTNESS=1.7mm/M 2. TWIST=1.7mm/M 3. FLATNESS =0.007xWIDTH
UPTO 10.0mm - ±0.23	UPTO 50.0mm - ±0.46	UPTO 160.0mm - ±1.02	
UPTO 12.0mm - ±0.25	UPTO 60.0mm - ±0.53	UPTO 200.0mm - ±1.14	
UPTO 16.0mm - ±0.28	UPTO 80.0mm - ±0.69	UPTO 250.0mm - ±1.40	
UPTO 25.0mm - ±0.30	UPTO 100.0mm - ±0.75	UPTO 300.0mm - ±1.65	

 SYMBOL OF QUALITY AN ISO 9001 COMPANY	JINDAL ALUMINIUM LTD. BANGALORE-560073 (INDIA)	DRAWN	J.P.KAUSHIK	DATE	06-12-2016	
		CHECKED				
		APPROVED	B.NATARAJ		17-12-2016	
1. ALL DIMENSIONS ARE IN mm. 2. ROUND OFF ALL SHARP CORNERS WITH 0.40 mm. 3. TOLERANCES WILL BE AS PER IS:6477-1983 , UNLESS OTHERWISE SPECIFIED		SCALE		1:1		
		AREA mm ²		1058.16		
		PERIMETER mm.		501.442		
PARTY'S NAME		ALUFIT (INDIA) PRIVATE LIMITED, BANGALORE		WEIGHT kg/m		2.857
PARTY'S DRAWING No.		AS PER AUTOCAD DRAWING-AL-41(KTPL)		DRAWING No.	SECTION No.	
ALLOY & TEMPER		6063 T6		P-16593	-	
DESCRIPTION		SASH FRAME(VERTICAL & TOP HORIZONTAL) SECTION		E0571	E0571	