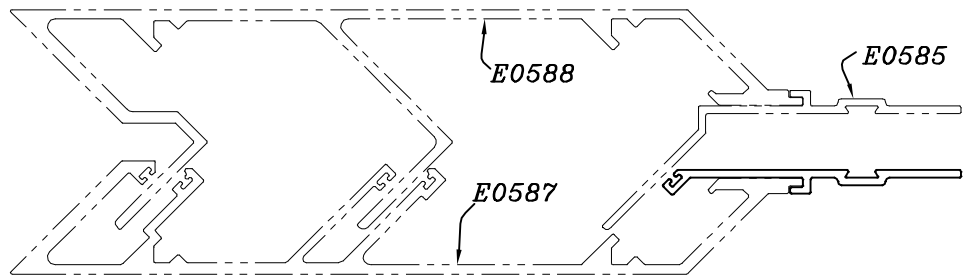
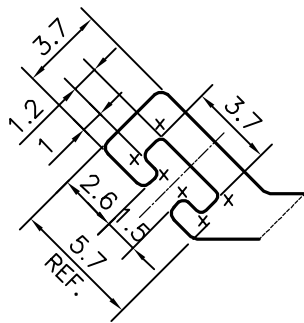
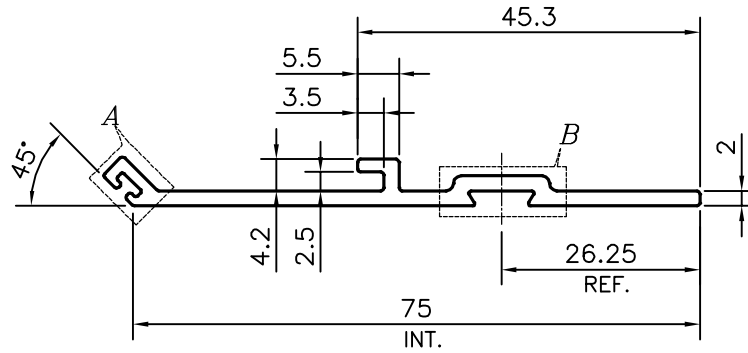


P-16690

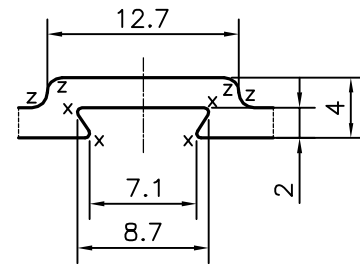
E0584



SCALE : 0.5:1



DETAIL OF "A"
SCALE 3:1



DETAIL OF "B"
SCALE 2:1

X = RADIUS 0.3 mm. (10 PLACES)
Z = RADIUS 1 mm. (4 PLACES)

1. STRAIGHTNESS=1.0mm/M
2. TWIST=1.0mm/M
3. ANGULARITY= ±1°
4. FLATNESS =0.007xWIDTH

UNSPECIFIED CORNERS RADIUS WILL BE 0.40 mm.



SYMBOL OF QUALITY
AN ISO 9001 COMPANY

JINDAL ALUMINIUM LTD.
BANGALORE-560073 (INDIA)

	NAME	DATE
DRAWN	PARVESH	06-01-2017
CHECKED		
APPROVED	B.NATARJA	10-01-2017
SCALE		1:1
AREA mm ²		187.312
PERIMETER mm.		193.897
WEIGHT kg/m		0.506
DRAWING No.	SECTION No.	
P-16690	-	
E0584	E0584	

1. ALL DIMENSIONS ARE IN mm.
2. ROUND OFF ALL SHARP CORNERS WITH 0.50 mm.
3. TOLERANCES WILL BE AS PER IS:3965-1981, UNLESS OTHERWISE SPECIFIED

PARTY'S NAME	ALUFIT (INDIA) PRIVATE LIMITED, BANGALORE
PARTY'S DRAWING No.	AS PER AUTOCAD DRAWING-AL-OR-29
ALLOY & TEMPER	6063 T6
DESCRIPTION	CURTAIN WALL SECTION-EXT. COR. FEMALE ADAPTER