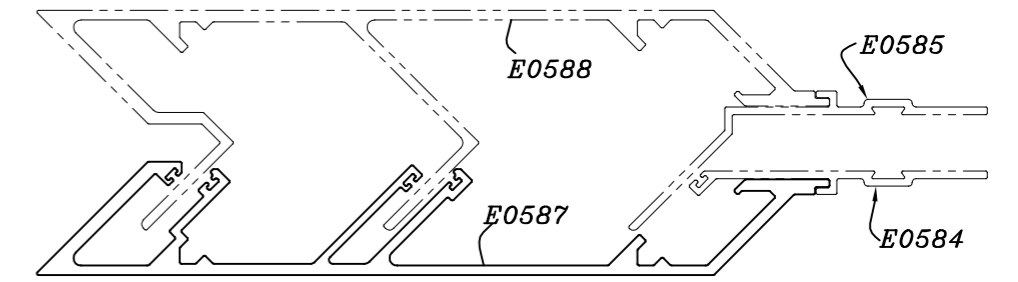
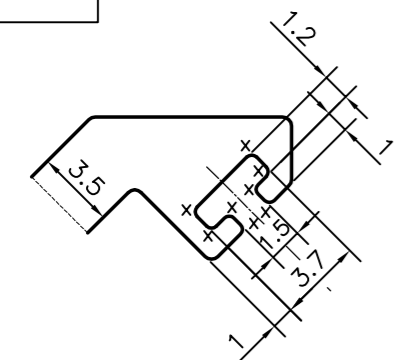
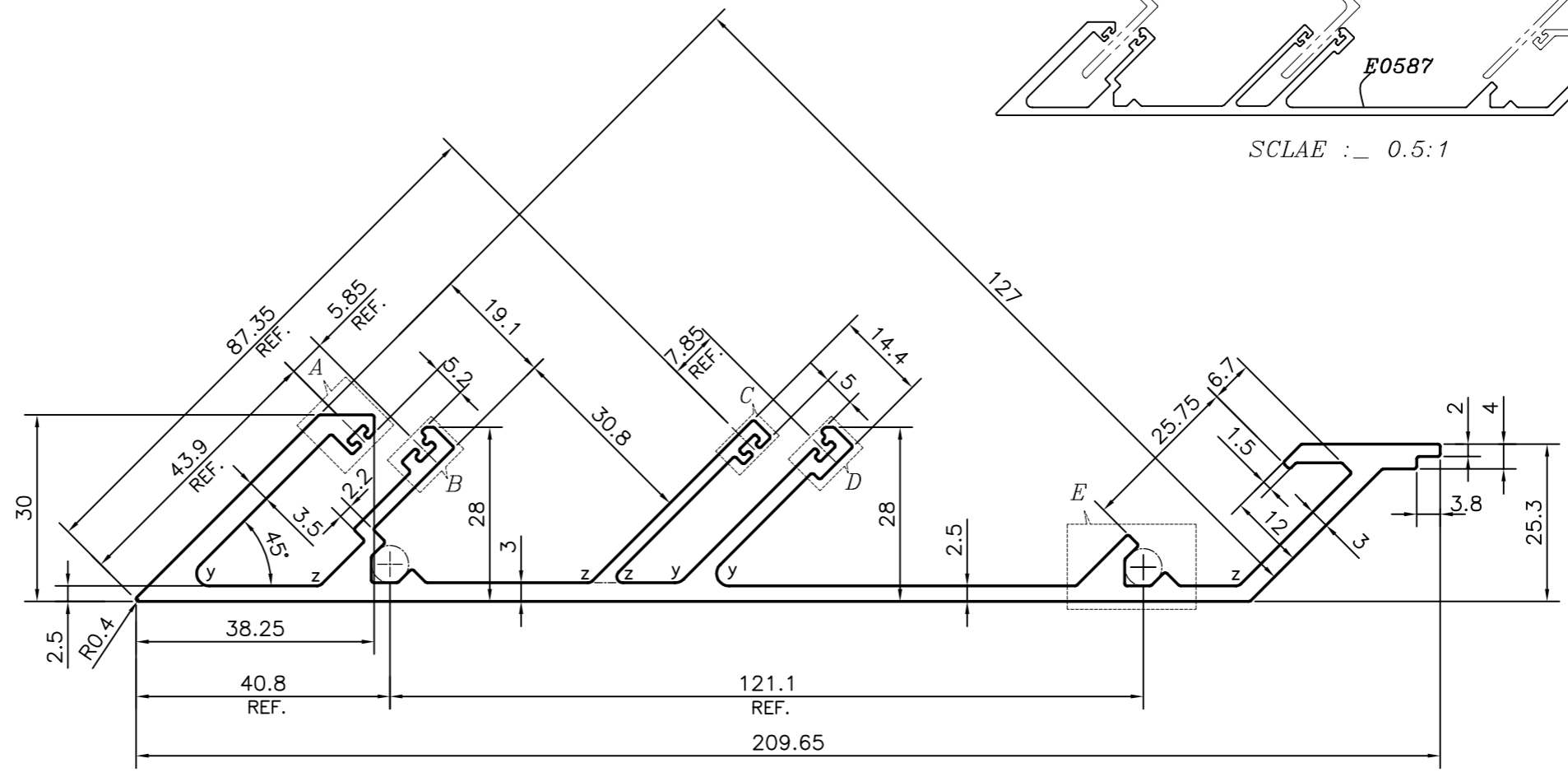


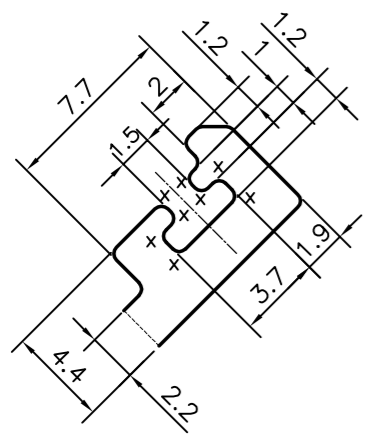
P-16694
E0587



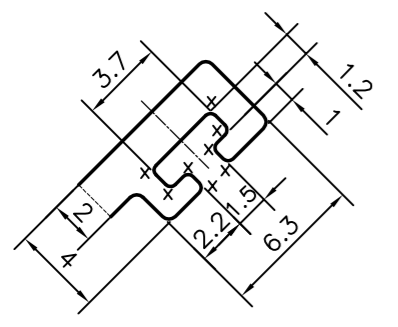
SCALE : 0.5:1



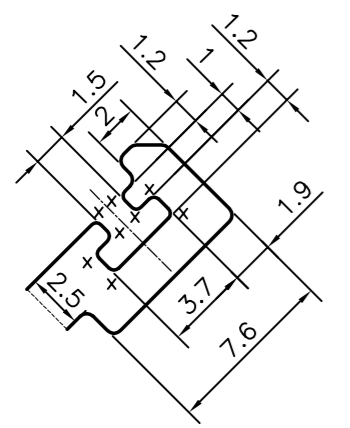
DETAIL OF "A"
SCALE 3:1



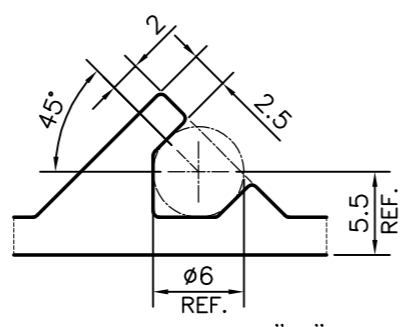
DETAIL OF "B"
SCALE 3:1



DETAIL OF "C"
SCALE 3:1



DETAIL OF "D"
SCALE 3:1



DETAIL OF "E"
SCALE 2:1

X = RADIUS 0.3 mm. (2 PLACES)
Z = RADIUS 1 mm. (4 PLACES)
Y = RADIUS 2 mm. 3 PLACES)

UNSPECIFIED CORNERS RADIUS WILL BE 0.40 mm.

TOLERANCES ON OVERALL WIDTHS & WIDTHS ACROSS FLATS OF BARS, & REGULAR SECTIONS

UPTO 6.40mm - ±0.20	UPTO 32.0mm - ±0.38	UPTO 120.0mm - ±0.85
UPTO 10.0mm - ±0.23	UPTO 50.0mm - ±0.46	UPTO 160.0mm - ±1.02
UPTO 12.0mm - ±0.25	UPTO 60.0mm - ±0.53	UPTO 200.0mm - ±1.14
UPTO 16.0mm - ±0.28	UPTO 80.0mm - ±0.69	UPTO 250.0mm - ±1.40
UPTO 25.0mm - ±0.30	UPTO 100.0mm - ±0.75	UPTO 300.0mm - ±1.65

1. STRAIGHTNESS=1.0mm/M
2. TWIST=1.0mm/M
3. ANGULARITY= ±1°
4. FLATNESS =0.007xWIDTH

<p>SYMBOL OF QUALITY AN ISO 9001 COMPANY</p>	<p>JINDAL ALUMINIUM LTD. BANGALORE-560073 (INDIA)</p>	NAME	DATE
		DRAWN	PARVESH 06-01-2017
<p>1. ALL DIMENSIONS ARE IN mm. 2. ROUND OFF ALL SHARP CORNERS WITH 0.50 mm. 3. TOLERANCES WILL BE AS PER IS:3965-1981, UNLESS OTHERWISE SPECIFIED</p>		CHECKED	
		APPROVED	B.NATARJA 10-01-2017
<p>PARTY'S NAME ALUFIT (INDIA) PRIVATE LIMITED, BANGALORE</p>		SCALE	1:1
		AREA mm ²	1121.821
<p>PARTY'S DRAWING No. AS PER AUTOCAD DRAWING-AL-OR-26</p>		PERIMETER mm.	797.026
		WEIGHT kg/m	3.029
<p>ALLOY & TEMPER 6063 T6</p>		DRAWING No.	SECTION No.
		P-16694	-
<p>DESCRIPTION CURTAIN WALL SECTION-EXT. CORNER FEMALE MULLION</p>		E0587	E0587