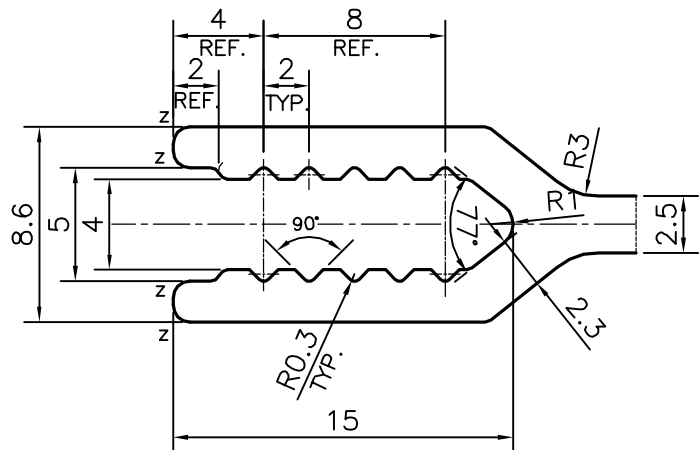
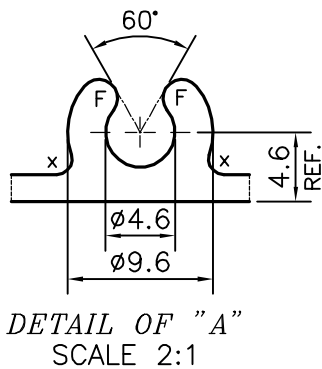
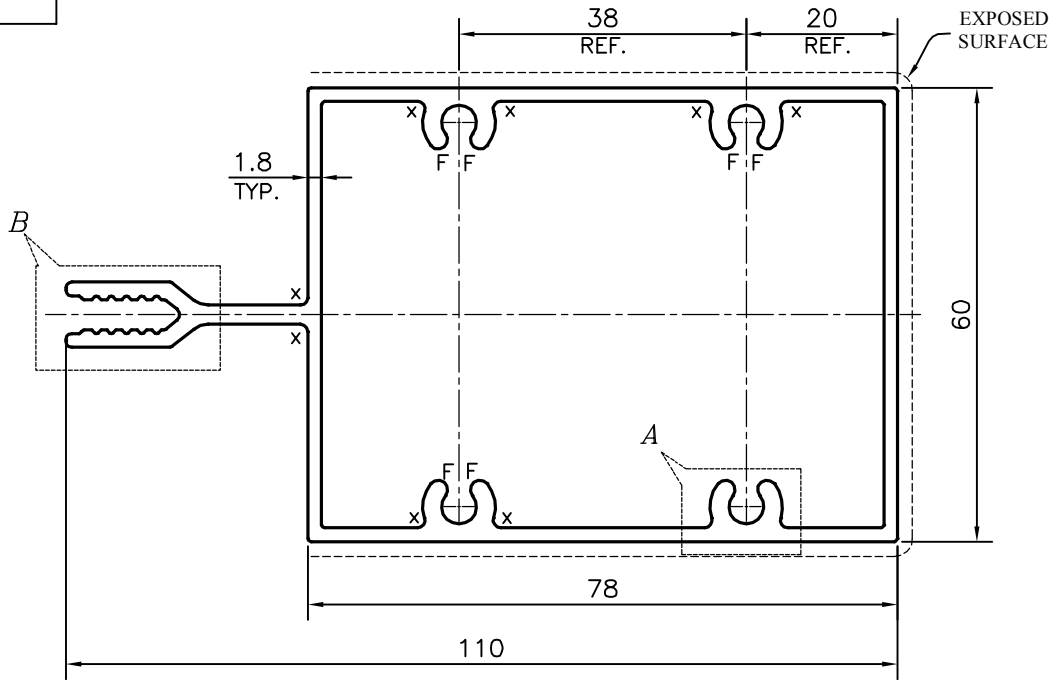


P-16654


E0590



1. STRAIGHTNESS=1.0mm/M
2. TWIST=1.0mm/M
3. ANGULARITY= ±1°
4. FLATNESS =0.007xWIDTH

- F = FULL RADIUS (8 PLACES)  
 X = RADIUS 1 mm. (10 PLACES)  
 Z = RADIUS 0.75 mm. (4 PLACES)

UNSPECIFIED CORNERS RADIUS WILL BE 0.40 mm.

 SYMBOL OF QUALITY AN ISO 9001 COMPANY	<b>JINDAL ALUMINIUM LTD.</b> BANGALORE-560073 (INDIA)	NAME	DATE
		DRAWN	PARVESH 22-12-2016
		CHECKED	
		APPROVED	B.NATARJA 12-01-2017
		SCALE	1:1
		AREA mm <sup>2</sup>	738.252
		PERIMETER mm.	376.388
		WEIGHT kg/m	1.993
PARTY'S NAME	ALUFIT (INDIA) PRIVATE LIMITED, BANGALORE	DRAWING No.	SECTION No.
PARTY'S DRAWING No.	AS PER AUTOCAD DRAWING-AL-EO-02	P-16654	-
ALLOY & TEMPER	6063 T6	E0590	E0590
DESCRIPTION	CURTAIN WALL SECTION-INTERMEDIATE MULLION /TRANSOM		