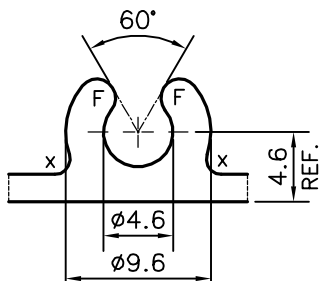
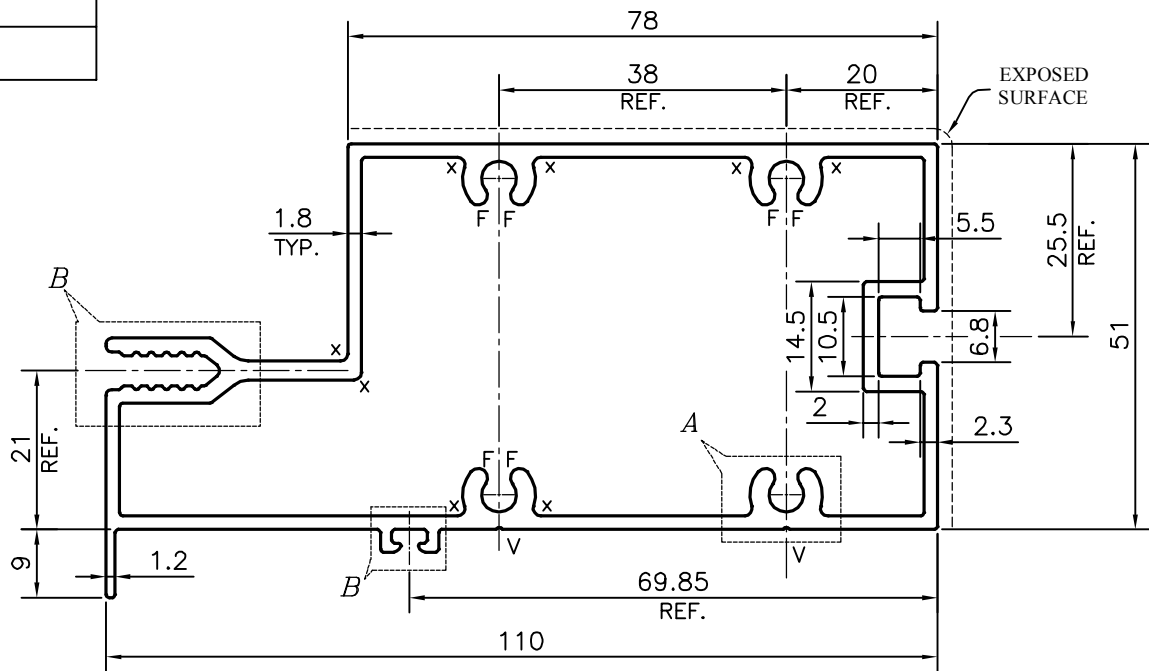
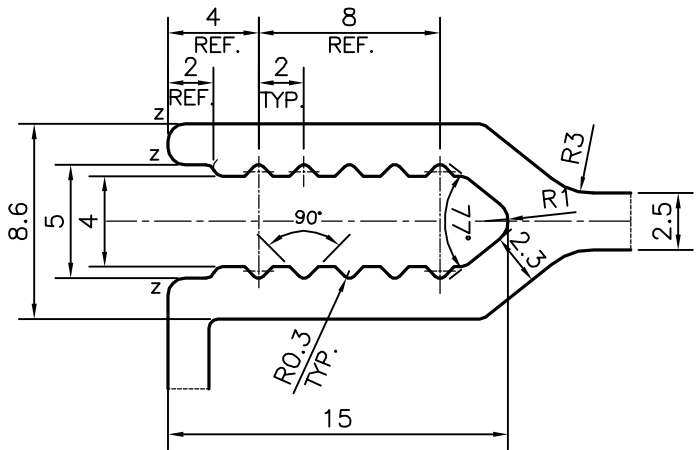


P-16655-1

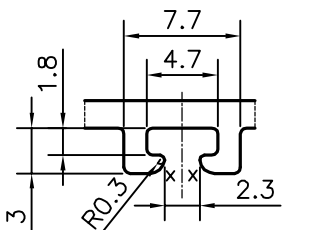
E0591



DETAIL OF "A"
SCALE 2:1



DETAIL OF "B"
SCALE 3:1




DETAIL OF "C"
SCALE 2:1

- 1. STRAIGHTNESS=1.0mm/M
- 2. TWIST=1.0mm/M
- 3. ANGULARITY= ±1°
- 4. FLATNESS =0.007xWIDTH

- V = VEE GROVE 0.3x90° (2 PLACES)
- F = FULL RADIUS (8 PLACES)
- X = RADIUS 1 mm. (12 PLACES)
- Z = RADIUS 0.75 mm. (3 PLACES)

UNSPECIFIED CORNERS RADIUS WILL BE 0.40 mm.

 SYMBOL OF QUALITY AN ISO 9001 COMPANY	JINDAL ALUMINIUM LTD. BANGALORE-560073 (INDIA)	NAME	DATE
		DRAWN	PARVESH 06-01-2017
		CHECKED	
		APPROVED	B.NATARJA 12-01-2017
		SCALE	1:1
		AREA mm ²	822.339
		PERIMETER mm.	409.167
		WEIGHT kg/m	2.220
PARTY'S NAME	ALUFIT (INDIA) PRIVATE LIMITED, BANGALORE	DRAWING No.	SECTION No.
PARTY'S DRAWING No.	AS PER AUTOCAD DRAWING-AL-EO-01	P-16655-1	-
ALLOY & TEMPER	6063 T6	E0591	E0591
DESCRIPTION	CURTAIN WALL SECTION-OUTER FRAME		