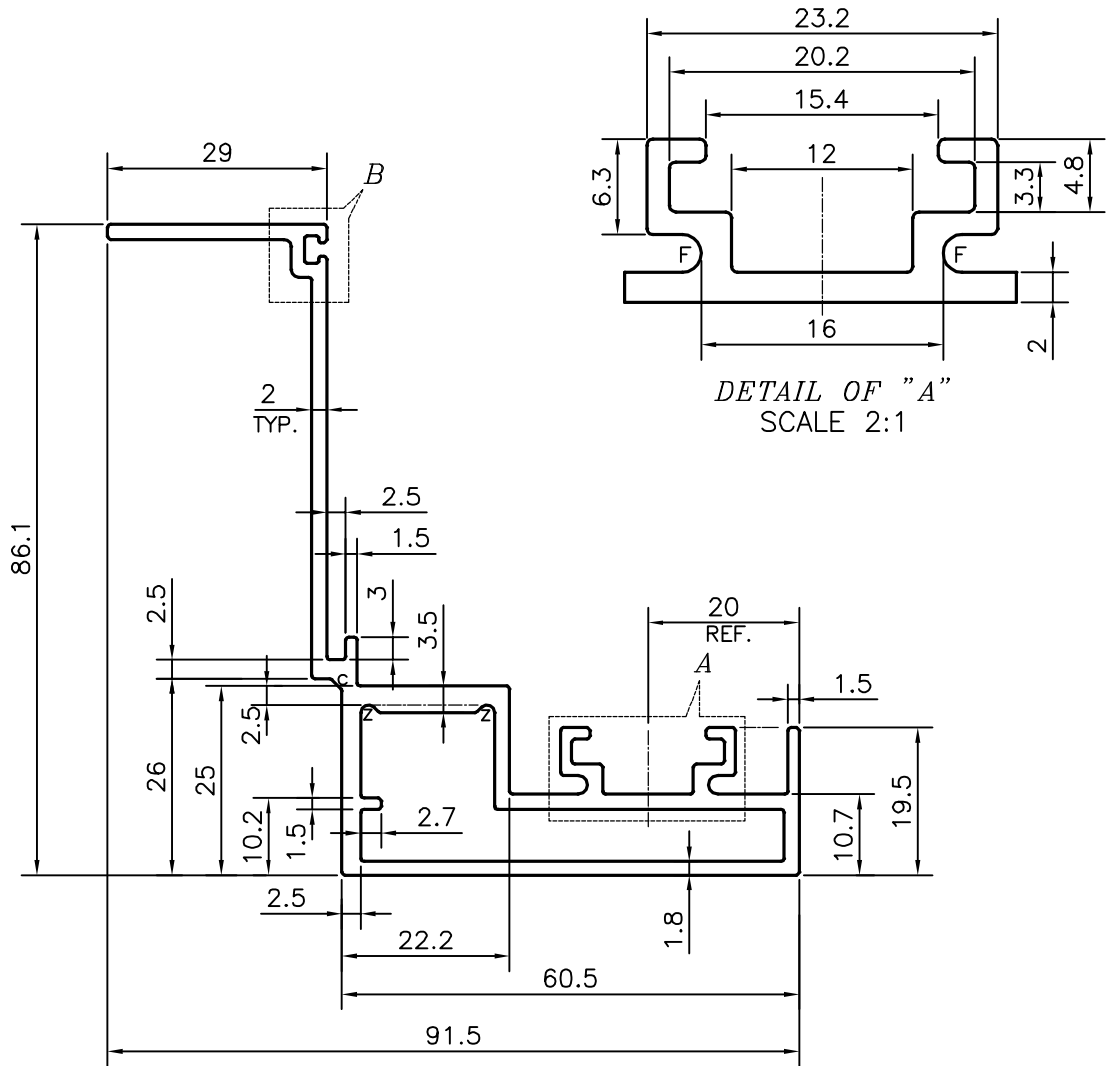
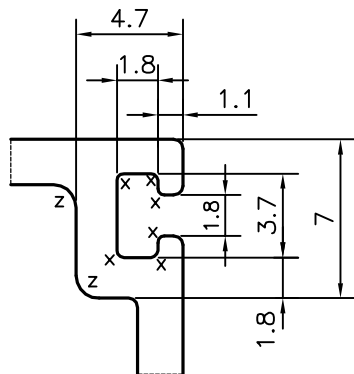


P-16689

E0596



DETAIL OF "A"  
SCALE 2:1




DETAIL OF "A"  
SCALE 3:1

- C = CHAMFER 1.5x45° (1 PLACE)
- F = FULL RADIUS (2 PLACES)
- Z = RADIUS 1 mm. (4 PLACES)
- X = RADIUS 0.3 mm. (6 PLACES)

1. STRAIGHTNESS=1.0mm/M
2. TWIST=1.0mm/M
3. ANGULARITY= ±1°
4. FLATNESS =0.007xWIDTH

UNSPECIFIED CORNERS RADIUS WILL BE 0.40 mm.

 SYMBOL OF QUALITY AN ISO 9001 COMPANY	<b>JINDAL ALUMINIUM LTD.</b> BANGALORE-560073 (INDIA)	NAME	DATE
		DRAWN	PARVESH 21-01-2017
		CHECKED	
		APPROVED	B.NATARJA 25-01-2017
		SCALE	1:1
		AREA mm <sup>2</sup>	611.9
		PERIMETER mm.	436.901
		WEIGHT kg/m	1.652
PARTY'S NAME	ALUFIT (INDIA) PRIVATE LIMITED, BANGALORE	DRAWING No.	SECTION No.
PARTY'S DRAWING No.	AS PER AUTOCAD DRAWING-AL-OR-20	P-16689	-
ALLOY & TEMPER	6063 T6	E0596	E0596
DESCRIPTION	CURTAIN WALL SECTION-SHUTTER FRAME HORIZONTAL		

1. ALL DIMENSIONS ARE IN mm.
2. ROUND OFF ALL SHARP CORNERS WITH 0.50 mm.
3. TOLERANCES WILL BE AS PER IS:6477-1983 , UNLESS OTHERWISE SPECIFIED